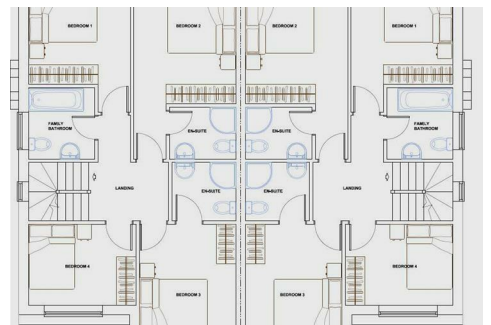
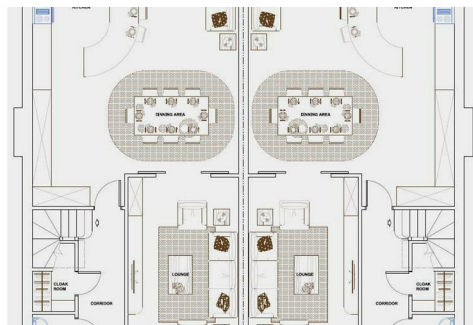


A Reputation To Rely Upon



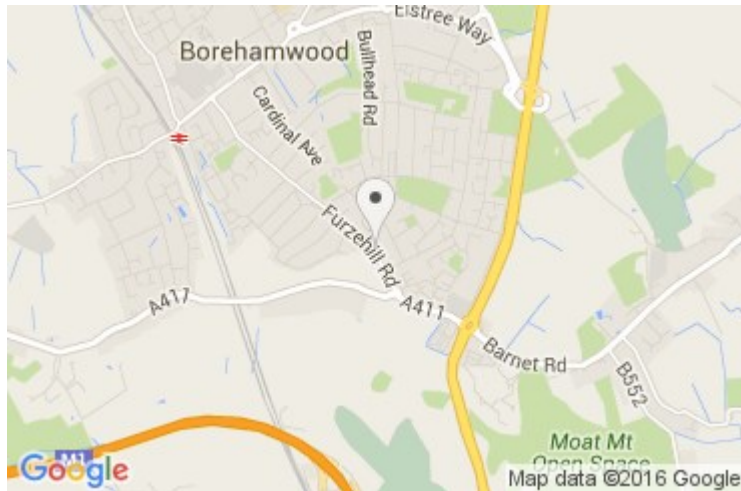
Furze Hill Road, Borehamwood, Hertfordshire WD6 2DR

Guide Price £1,000,000

- Development Opportunity
- Five Double Bedrooms
- Large Gardens
- Two large Semi's
- Three with en suites
- Ample Parking

141 Furzehill Road, Borehamwood, Hertfordshire WD6 2DR

A rare opportunity to purchase a site with full planning permission for the construction of two substantial semi detached houses. The site is located in one of the areas most sought after locations being accessible for the town centre, station and short walk to Yavneh Collage. The accommodation for each of the houses is on a very generous scale with gross square footage in excess of 1,900 sq ft for each of the homes, offering five double bedrooms three with en suites. These residences will enjoy unusually large gardens for new homes and ample off street parking to the front for three vehicles.



Energy Efficiency Rating		
	Current	Potential
Very energy efficient - lower running costs		
(92 plus) A		
(81-91) B		
(69-80) C		
(55-68) D		
(39-54) E		
(21-38) F		
(1-20) G		
Not energy efficient - higher running costs		
England & Wales		
EU Directive 2002/91/EC		

Environmental Impact (CO ₂) Rating		
	Current	Potential
Very environmentally friendly - lower CO ₂ emissions		
(92 plus) A		
(81-91) B		
(69-80) C		
(55-68) D		
(39-54) E		
(21-38) F		
(1-20) G		
Not environmentally friendly - higher CO ₂ emissions		
England & Wales		
EU Directive 2002/91/EC		