



Bush & Co.



275 Wellbrook Way, Girton, CB3 0GL

Guide Price £680,000 Freehold

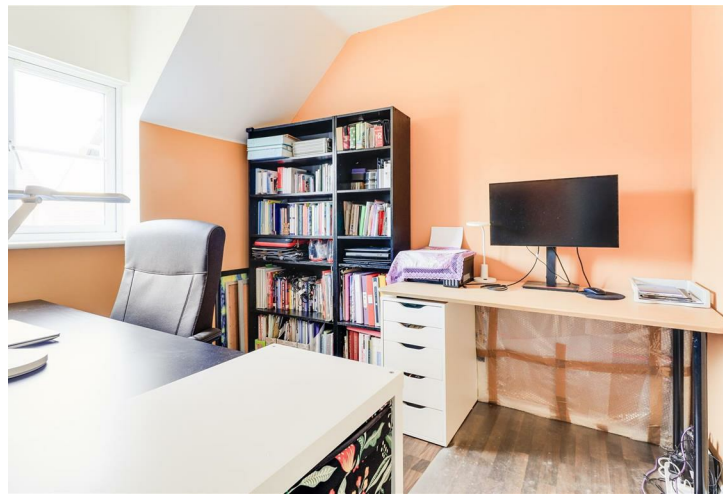


Energy Rating Band C

In brief, the accommodation consists of a storm porch, which leads to the entrance hallway, which has stairs rising to the first floor, under-stair storage, WC off. The living room is light and airy, spanning the whole width of the property, over 21ft in length. There are dual aspect windows and patio doors which lead to the rear garden. The kitchen has a range of cabinets and drawers, ample work surfaces, an integrated dishwasher, an integrated double oven, a 4-ring gas hob with extractor above tiled splashback, and 2 windows to the rear. Off the kitchen is a utility room, with storage cupboards, sink with mixer tap, space and plumbing for various appliances, and a part-glazed door leads to the garden. The dining room is located at the front of the property and could easily be adjoined to the kitchen, to make an open plan kitchen/diner. The ground floor accommodation is finished with a WC.

The first floor accommodation has 4 bedrooms, off a central landing with access to the loft space. Bedroom 1 is a good-sized double, with built-in storage and an en suite, walk-in shower, WC, wash hand basin, and Velux window. Bedroom 2 again is a double with an en suite shower, WC, and hand wash basin. Bedroom 3 is a double, and bedroom 4 is a comfortable single. The family bathroom has a bath with a shower over, WC, wash hand basin.

Outside, the property is located at the end of Wellbrook Way, in a traffic-free location, and the property overlooks the nature reserve to the front. There is off-street parking, a garage with power and light connected. The large rear garden has a patio area, timber storage shed, and a secure wooden gate that gives access to the front of the property.



Exceptional service in Cambridge and the surrounding villages

Bush & Co is a leading independent estate agency that takes pride in providing the friendly, professional advice you would expect from a long established company combined with the dynamic efficiency of a contemporary, progressive practice.

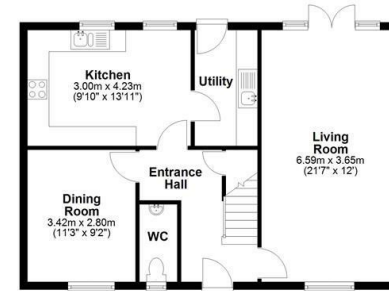
At Bush & Co we value your custom as highly as we value our own integrity and reputation. Please contact us for a confidential discussion and impartial advice on how we can deliver a truly bespoke service which we are sure will exceed your expectations.

- * Honest valuations with a true market assessment
- * Bespoke individual marketing
- * Premium and feature listing status
- * Dedicated sales progression
- * Social media campaigns
- * Professional quality photography
- * Media tours

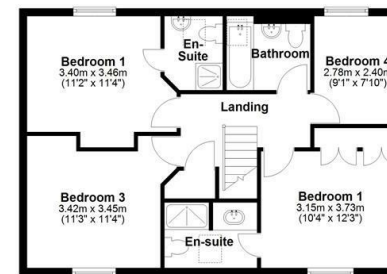
Contact us for a free valuation of your property
01223 246262
sales@bushandco.co.uk

Established. Independent. Passionate

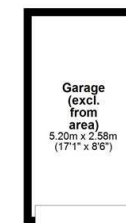
Ground Floor
Approx. 63.7 sq. metres (685.7 sq. feet)



First Floor
Approx. 64.2 sq. metres (690.9 sq. feet)



Outbuilding
Approx. 0.0 sq. metres (0.0 sq. feet)



Total area: approx. 127.9 sq. metres (1376.6 sq. feet)
Drawings are for guidance only
Plan produced using PlanUp.

Further Information

Tenure - Freehold

Council Tax - Band E

Fixtures & Fittings - Unless specifically mentioned in these particulars all fixtures and fittings are expressly excluded from the sale

Viewing - By Appointment

169 Mill Road
Cambridge
Cambridgeshire
CB1 3AN
www.bushandco.co.uk

