



Marseilles Close

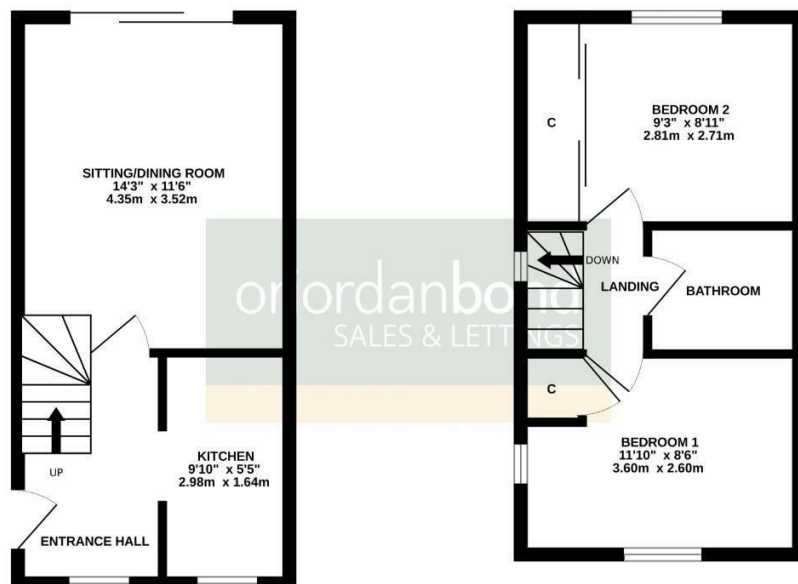
Duston, Northampton

oriordanbond
SALES & LETTINGS



GROUND FLOOR
277 sq.ft. (25.8 sq.m.) approx.

1ST FLOOR
270 sq.ft. (25.1 sq.m.) approx.



TOTAL FLOOR AREA : 548 sq.ft. (50.9 sq.m.) approx.

Whilst every attempt has been made to ensure the accuracy of the floorplan contained here, measurements of doors, windows, stairs and any other items are approximate and no responsibility is taken for any error, omission or mis-statement. This plan is for illustrative purposes only and should be used as such by any prospective purchaser. The services, systems and appliances shown have not been tested and no guarantee as to their operability or efficiency can be given.
Made with Metreapp G2025

Marseilles Close

Duston

NN5 6YT

OFFERS OVER £220,000

Offered for sale with no upper chain is this two double bedroom semi-detached house, in need of cosmetic updating, situated in this quiet cul-de-sac location, on the popular St. Giles Park development within Duston.

Accommodation comprises entrance hall, fitted kitchen, sitting room with patio doors onto the garden, first floor landing, two double bedrooms and a family bathroom. Externally there is a rear garden which is predominantly lawn with a patio area and shed. To the front is off road parking. Further benefits include double glazing and electric storage heating. (C/548/S)

Additional information

- Council Tax Band: B
- Energy Efficiency Rating: D

Viewing

Viewing strictly by appointment – details below

Disclaimer

O'Riordan Bond Estate Agents Limited has not tested apparatus, equipment, fittings or services and so cannot verify they are in working order. The buyer is advised to obtain verification from their solicitor or surveyor.

O'Riordan Bond Duston North Sales
01604 589007

dustonnorth@oriordanbond.co.uk

