



**Lindisfarne Way**  
East Hunsbury, Northampton

**oriordanbond**  
SALES & LETTINGS

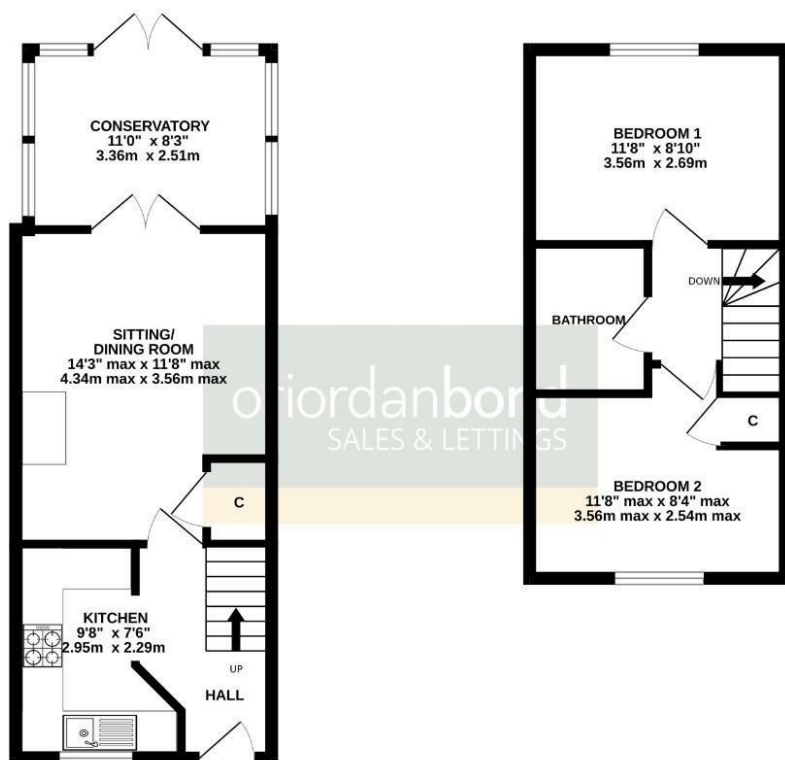
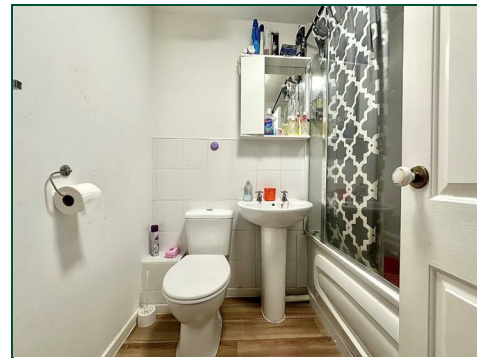




GROUND FLOOR  
367 sq. ft. (34.1 sq.m.) approx.



1ST FLOOR  
277 sq. ft. (25.8 sq.m.) approx.



While every attempt has been made to ensure the accuracy of the floorplan contained here, measurements of doors, windows, rooms and any other items are approximate and no responsibility is taken for any error, omission or misstatement. This plan is for illustrative purposes only and should be used as such by any prospective purchaser. The services, systems and appliances shown have not been tested and no guarantee as to their operability or efficiency can be given.  
Made with Metropix 5.0.2025

## Lindisfarne Way

East Hunsbury

NN4 0WL

OFFERS OVER £200,000

Offered to the market with no onward chain is this two double bedroom terraced home, nestled at the end of a cul-de-sac, within the popular area of East Hunsbury. The accommodation is arranged over two floors.

Entrance hall with stairs to the first floor, a door to a modern fitted kitchen with integrated appliances, a sitting/dining room and conservatory. To the first floor is access to the loft space, an airing cupboard, two generous double bedrooms and a family bathroom. Outside, to the front of the property is a lawned garden and off road parking. The rear garden is southerly facing and mainly laid to lawn, has a paved patio seating area and timber fencing to enclose. Further benefits include uPVC double glazing and gas radiator heating. (B/644/M)

### Additional information

- Council Tax Band: B
- Energy Efficiency Rating:

### Viewing

Viewing strictly by appointment – details below

### Disclaimer

O'Riordan Bond Estate Agents Limited has not tested apparatus, equipment, fittings or services and so cannot verify they are in working order. The buyer is advised to obtain verification from their solicitor or surveyor.

O'Riordan Bond Hunsbury Sales

01604 706007

[hunsbury@oriordanbond.co.uk](mailto:hunsbury@oriordanbond.co.uk)

