



Woodhall Close

West Hunsbury, Northampton

oriordanbond
SALES & LETTINGS



Woodhall Close

West Hunsbury
NN4 9UB

Offers Over
£280,000

A two bedroom detached bungalow located within a quiet cul-de-sac in the popular West Hunsbury estate. Offered for sale with no onward chain, the property provides good access to Upton Country Park.

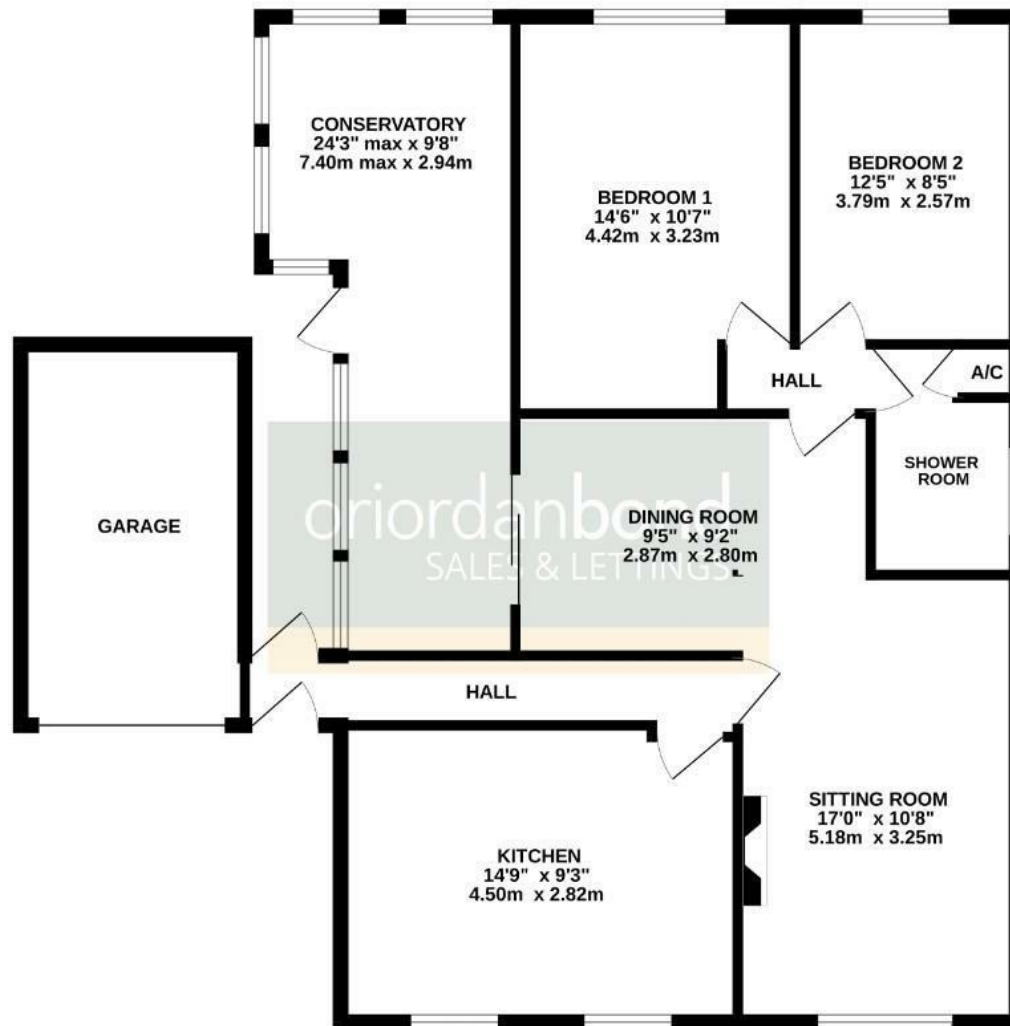
The accommodation comprises entrance hall, re-fitted kitchen/breakfast room, open plan sitting/dining room, two double bedrooms, a three-piece shower room and a large conservatory. Outside is a large block paved driveway to the front providing off road parking with a detached single garage and further parking in front. To rear is a wrap around garden with lawn and patio areas. Further benefits include uPVC double glazing and gas radiator heating. (C/900/L)

- Two bedroom detached bungalow
- Open plan sitting/dining room
- Large conservatory
- Wrap around garden
- Off road parking and detached garage
- No upper chain





GROUND FLOOR
1138 sq.ft. (105.7 sq.m.) approx.



TOTAL FLOOR AREA : 1138 sq.ft. (105.7 sq.m.) approx.

Whilst every attempt has been made to ensure the accuracy of the floorplan contained here, measurements of doors, windows, rooms and any other items are approximate and no responsibility is taken for any error, omission or mis-statement. This plan is for illustrative purposes only and should be used as such by any prospective purchaser. The services, systems and appliances shown have not been tested and no guarantee as to their operability or efficiency can be given.
Made with Metropro ©2025



Additional information

- Council Tax Band: C
- Energy Efficiency Rating: D

Viewing

Viewing strictly by appointment – details below

Disclaimer

O'Riordan Bond Estate Agents Limited has not tested apparatus, equipment, fittings or services and so cannot verify they are in working order. The buyer is advised to obtain verification from their solicitor or surveyor.

O'Riordan Bond Hunsbury Sales

01604 706007

hunsbury@oriordanbond.co.uk

