



Fleetwind Drive

East Hunsbury, Northampton

oriordanbond
SALES & LETTINGS



Fleetwind Drive

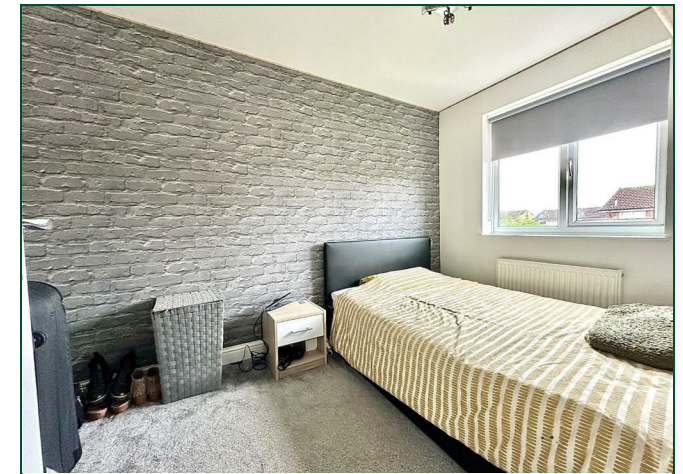
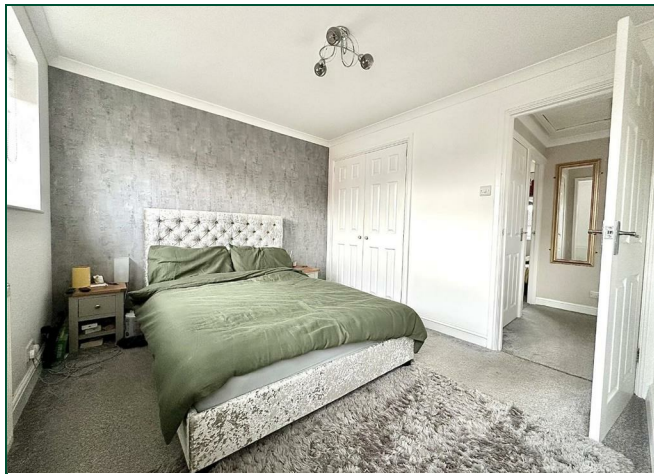
East Hunsbury
NN4 0ST

Price
£250,000

A well presented two bedroom semi-detached home, situated in a cul-de-sac, within the popular area of East Hunsbury, on a corner plot position and offered for sale with no onward chain.

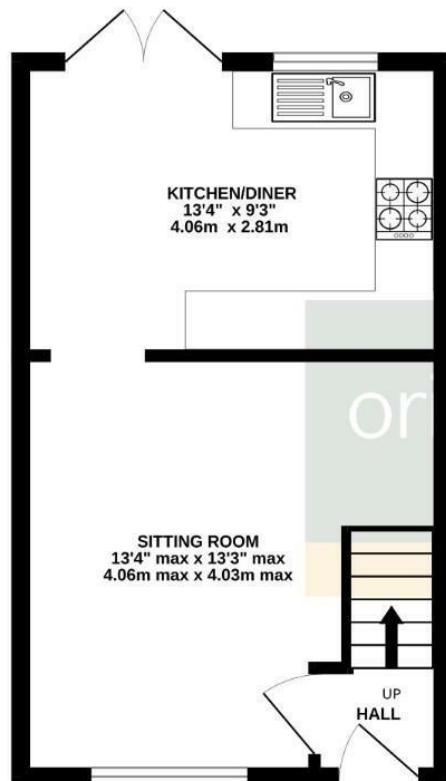
The accommodation comprises entrance hall with stairs to the first floor, a door leading to a generous sitting room and a wonderful kitchen/dining room with integrated appliances and patio doors to the rear garden. To the first floor is access to the loft space, an airing cupboard, two ample bedrooms with fitted wardrobes to the main bedroom and a fabulous re-fitted shower room. Outside, the property sits on an enviable westerly facing corner plot and has a double width driveway to the front, a generous rear garden which is mainly laid to lawn, has a patio seating area, decking, a timber shed and timber fencing to enclose. There is also a second driveway to the rear for a further two cars. Further benefits include uPVC double glazing and gas radiator heating. (A/595/L)

- Two bedroom semi-detached home
- Kitchen/dining with integrated appliances
- Re-fitted shower room
- Good size rear garden
- Ample off road parking to front and rear
- No onward chain

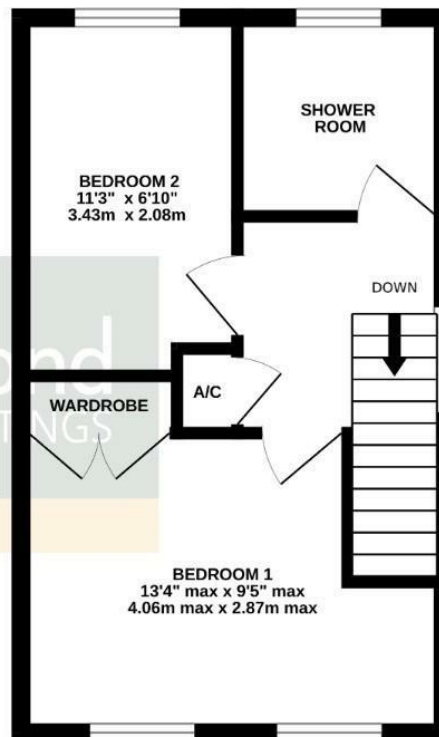




GROUND FLOOR
297 sq.ft. (27.6 sq.m.) approx.

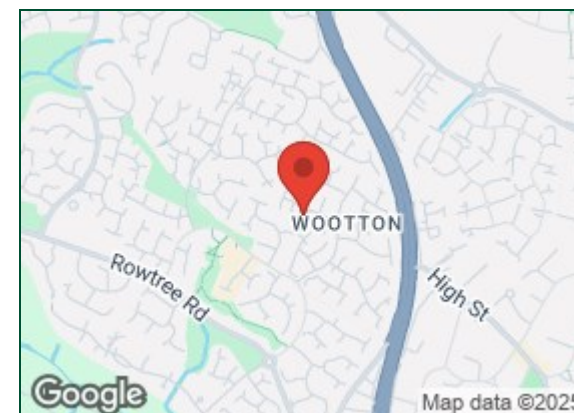


1ST FLOOR
297 sq.ft. (27.6 sq.m.) approx.



TOTAL FLOOR AREA : 595 sq.ft. (55.3 sq.m.) approx.

Whilst every attempt has been made to ensure the accuracy of the floorplan contained here, measurements of doors, windows, rooms and any other items are approximate and no responsibility is taken for any error, omission or mis-statement. This plan is for illustrative purposes only and should be used as such by any prospective purchaser. The services, systems and appliances shown have not been tested and no guarantee as to their operability or efficiency can be given.
Made with Metropix ©2025



Additional information

- Council Tax Band: B
- Energy Efficiency Rating: D

Viewing

Viewing strictly by appointment – details below

Disclaimer

O'Riordan Bond Estate Agents Limited has not tested apparatus, equipment, fittings or services and so cannot verify they are in working order. The buyer is advised to obtain verification from their solicitor or surveyor.

O'Riordan Bond Hunsbury Sales

01604 706007

hunsbury@oriordanbond.co.uk

