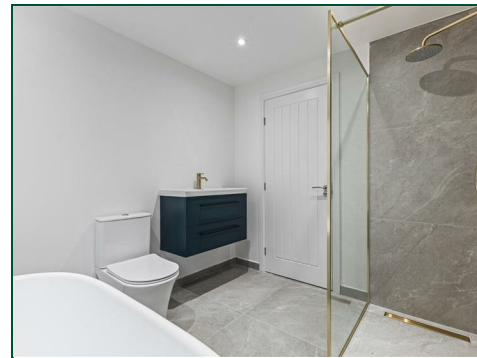




**Thorpeville**  
Moulton, Northampton

**oriordanbond**  
LETTINGS





# Thorpeville

Moulton

NN3 7TS

£2,200 PCM

A superb contemporary detached family home situated in this highly regarded location within Moulton. The property has been completely and meticulously re-modelled and refurbished throughout with a high standard of finish and generous room sizes tailored for modern living. Offered to the market unfurnished, the accommodation comprises entrance hall, sitting room, study, impressive open plan re-fitted kitchen/dining/family room with a range of integrated appliances and full width bi-fold doors to the garden, a utility/boot room and a re-fitted cloakroom/WC. To the first floor are five double bedrooms, high quality en-suite and Juliette balcony to the master and an additional en-suite to bedroom two. There is also a re-fitted four-piece house bathroom with walk-in shower and free-standing bath. Externally there is ample off road parking to the front and a large enclosed rear garden. Further benefits include gas radiator heating and uPVC double glazing.

## Tenancy Information

- Deposit: £2538.00 (1 Week Holding Deposit - £507.00)
- Smokers: Not Allowed
- Unfurnished
- Length of Tenancy: 12 Months
- Available: December 2025

## Additional information

- Council Tax Band: New Build
- Energy Efficiency Rating: D

## Viewing

Viewing strictly by appointment – details below

## Disclaimer

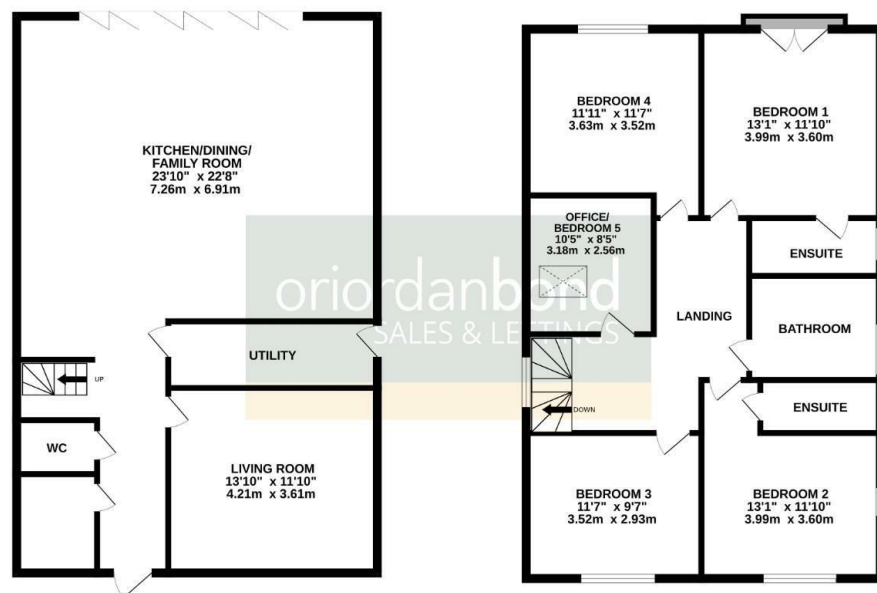
O'Riordan Bond Estate Agents Limited has not tested apparatus, equipment, fittings or services and so cannot verify they are in working order. The buyer is advised to obtain verification from their solicitor or surveyor.

O'Riordan Bond Weston Favell Lettings  
01604 814400

lettingswestonfavell@oriordanbond.co.uk

GROUND FLOOR  
875 sq.ft. (81.3 sq.m.) approx.

1ST FLOOR  
847 sq.ft. (78.7 sq.m.) approx.



TOTAL FLOOR AREA: 1722 sq.ft. (160.0 sq.m.) approx.

Whilst every attempt has been made to ensure the accuracy of the floorplan contained here, measurements of doors, windows, rooms and any other items are approximate and no responsibility is taken for any error, omission or mis-statement. This plan is for illustrative purposes only and should be used as such by any prospective purchaser. The services, systems and appliances shown have not been tested and no guarantee as to their operability or efficiency can be given.  
Made with Metagix ©2025

