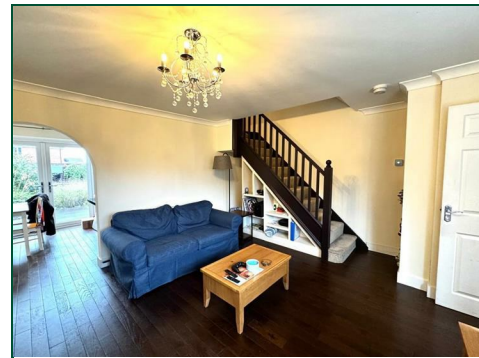




Flinters Close

Wootton, Northampton

oriordanbond
LETTINGS



Flinters Close

Wootton

NN4 6BH

£1,150 PCM

A three bedroom semi-detached home situated within the most sought-after location of Wootton, which is close to excellent schools and many amenities. The accommodation comprises entrance hall, a cloakroom/WC, a lounge, a modern refitted kitchen/diner with oven and hob, three bedrooms, an ensuite shower room and a family bathroom with a shower over bath. Further benefits include gardens to the front and rear with a driveway for three vehicles, gas central heating, and uPVC double glazing.

Tenancy Information

- Deposit: £1326.00 (1 Week Holding Deposit - £265.00)
- Smokers: Not Allowed
- Unfurnished
- Length of Tenancy: 12 Months
- Available: End of October 2024

Additional information

- Council Tax Band: C
- Energy Efficiency Rating: C

Viewing

Viewing strictly by appointment – details below

Disclaimer

O'Riordan Bond Estate Agents Limited has not tested apparatus, equipment, fittings or services and so cannot verify they are in working order. The buyer is advised to obtain verification from their solicitor or surveyor.

O'Riordan Bond Weston Favell Lettings

01604 814400

lettingswestonfavell@oriordanbond.co.uk

GROUND FLOOR
364 sq.ft. (33.8 sq.m.) approx.

1ST FLOOR
363 sq.ft. (33.8 sq.m.) approx.



TOTAL FLOOR AREA: 727 sq.ft. (67.5 sq.m.) approx.

Whilst every attempt has been made to ensure the accuracy of the floorplan contained here, measurements of doors, windows, rooms and any other items are approximate and no responsibility is taken for any error, omission or mis-statement. This plan is for illustrative purposes only and should be used as such by any prospective purchaser. The services, systems and appliances shown have not been tested and no guarantee as to their operability or efficiency can be given.

Made with Metropix ©2024

