



Farmers Close

Wootton Fields, Northampton

oriordanbond
SALES & LETTINGS



Farmers Close

Wootton Fields
NN4 6HS

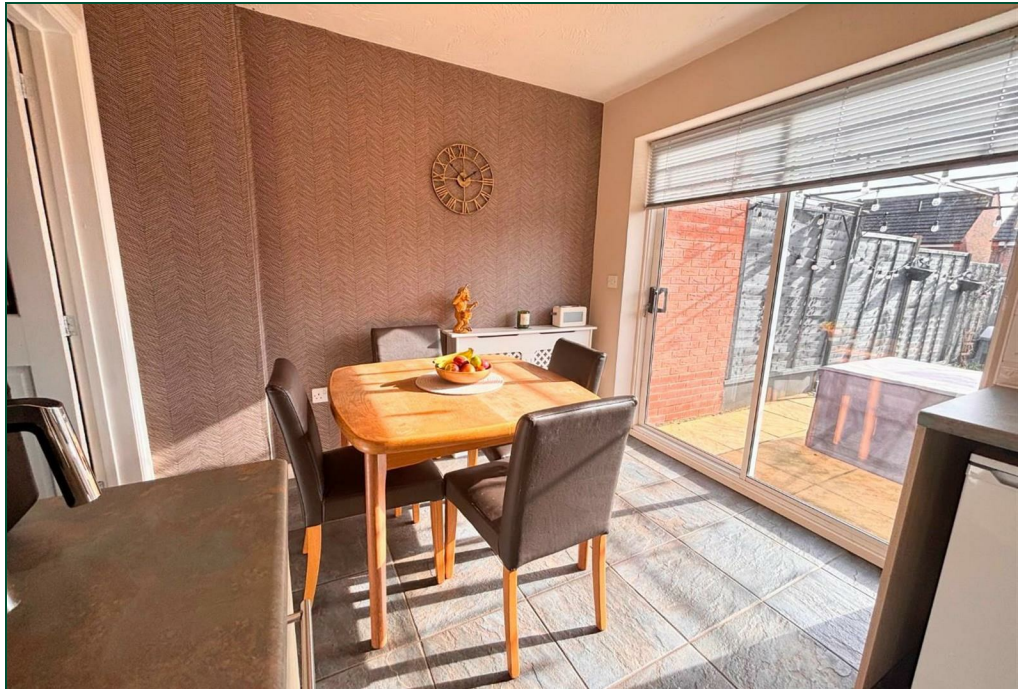
Price
£325,000

Tucked away in a quiet cul-de-sac within sought after Wootton Fields is this three bedroom family home. The property provides good access to many local schools as well as good access to the A45.

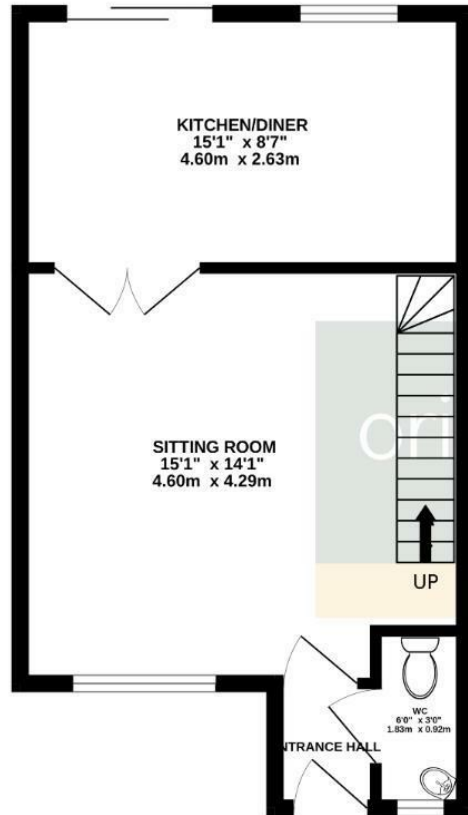
The accommodation comprises entrance hall, cloakroom/WC, sitting room and kitchen/dining room on the ground floor. To the first floor there are three bedrooms and a family bathroom with en-suite shower room to the master bedroom. Outside is an enclosed rear garden with lawn and patio areas and a low maintenance front garden with off road parking and a single garage. Further benefits include uPVC double glazing and gas radiator heating. (B/742/M)

- Three bedroom family home in cul-de-sac
- En-suite to master bedroom
- Kitchen/dining room
- Gas radiator heating
- Enclosed rear garden
- Off road parking and garage

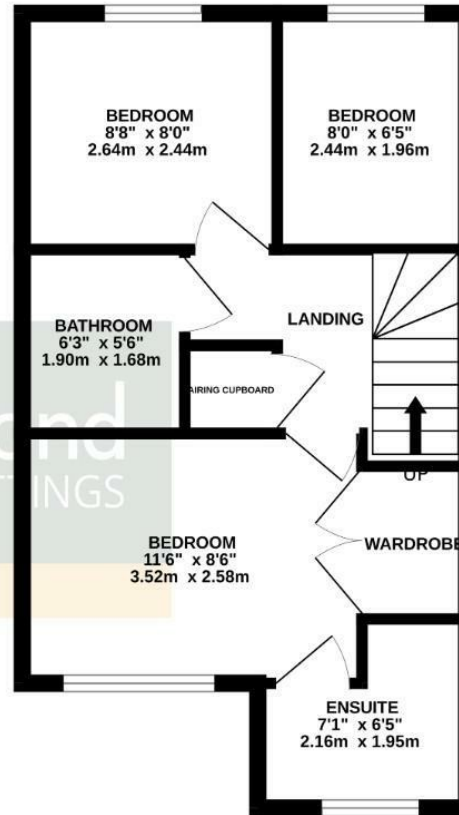




GROUND FLOOR
370 sq.ft. (34.3 sq.m.) approx.



1ST FLOOR
372 sq.ft. (34.6 sq.m.) approx.



TOTAL FLOOR AREA : 742 sq.ft. (68.9 sq.m.) approx.

Whilst every attempt has been made to ensure the accuracy of the floorplan contained here, measurements of doors, windows, rooms and any other items are approximate and no responsibility is taken for any error, omission or mis-statement. This plan is for illustrative purposes only and should be used as such by any prospective purchaser. The services, systems and appliances shown have not been tested and no guarantee as to their operability or efficiency can be given.

Made with Metropix ©2025



Additional information

- Council Tax Band: C
- Energy Efficiency Rating:

Viewing

Viewing strictly by appointment – details below

Disclaimer

O'Riordan Bond Estate Agents Limited has not tested apparatus, equipment, fittings or services and so cannot verify they are in working order. The buyer is advised to obtain verification from their solicitor or surveyor.

O'Riordan Bond Grange Park Sales
01604 432007

grangepark@oriordanbond.co.uk

