

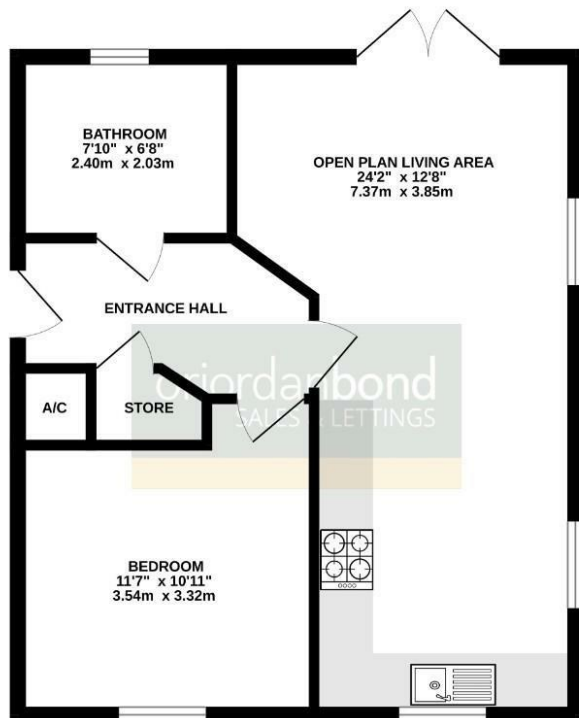


Flat 6, 35 Osier Way
Olney, Buckinghamshire

oriordanbond
SALES & LETTINGS



GROUND FLOOR
496 sq.ft. (46.1 sq.m.) approx.



TOTAL FLOOR AREA : 496 sq.ft. (46.1 sq.m.) approx.
Whilst every attempt has been made to ensure the accuracy of the floorplan contained here, measurements of doors, windows, rooms and any other items are approximate and no responsibility is taken for any errors, omissions or misstatement. This plan is for illustrative purposes only and should be used as such by any prospective purchaser. The services, systems and appliances shown have not been tested and no guarantee as to their operability or efficiency can be given.
Made with floorplan 120223

Flat 6, 35 Osier Way

Olney
MK46 5FP

OFFERS OVER
£180,000

Set on this recently constructed edge of town development is this exceptional top floor apartment. Built by Messrs Lioncourt Homes and benefitting from gas radiator central heating, the apartment enjoys far reaching views over countryside and also benefits from being a very short walk to Sainsbury Supermarket and a pleasant fifteen minute walk into Olney Market Place.

The accommodation comprises hallway, two large walk-in storage cupboards, double bedroom, bathroom and an open plan kitchen/sitting room with French doors to the south facing elevation. The property benefits from double glazing throughout, a communal bicycle store, allocated parking and a small area of localised garden area. (A/496/-)

Leasehold Information: Lease Remaining - 123 years (as of 2023) / Ground Rent - £66.33 per annum / Service Charge - £598.69 per annum

Additional information

- Council Tax Band: B
- Energy Efficiency Rating: B

Viewing

Viewing strictly by appointment – details below

Disclaimer

O'Riordan Bond Estate Agents Limited has not tested apparatus, equipment, fittings or services and so cannot verify they are in working order. The buyer is advised to obtain verification from their solicitor or surveyor.

O'Riordan Bond Grange Park Sales
01604 432007

grangepark@oriordanbond.co.uk

