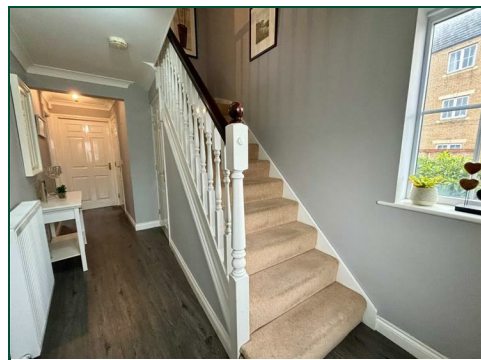




2 Baines Way

Grange Park, Northampton

oriordanbond
SALES & LETTINGS



GROUND FLOOR

1ST FLOOR



TOTAL FLOOR AREA: 1272 sq.ft. (118.2 sq.m.) approx.

Whilst every attempt has been made to ensure the accuracy of the floorplan contained here, measurements of doors, windows, rooms and any other items are approximate and no responsibility is taken for any error, omission or mis-statement. This plan is for illustrative purposes only and should be used as such by any prospective purchaser. The services, systems and appliances shown have not been tested and no guarantee as to their operability or efficiency can be given.
Made with Metropix 5.0223

2 Baines Way

Grange Park

NN4 5DP

PRICE £299,995

A modern three bedroom town house, situated in the sought after area of Grange Park, located just off junction 15 of the M1. The property provides good access to local amenities and the popular Woodland View Primary School.

The accommodation comprises entrance hall, shower room, utility room and study/bedroom three. To the first floor is a sitting/dining room and kitchen/breakfast room. To the second floor is a master bedroom with en-suite shower room, a further double bedroom and a family bathroom. The property benefits from gas radiator heating and uPVC double glazing. Outside is an enclosed rear garden and a driveway to the front leading to an integral garage. (B/1272/S)

Additional information

- Council Tax Band: D
- Energy Efficiency Rating: C

Viewing

Viewing strictly by appointment – details below

Disclaimer

O'Riordan Bond Estate Agents Limited has not tested apparatus, equipment, fittings or services and so cannot verify they are in working order. The buyer is advised to obtain verification from their solicitor or surveyor.

O'Riordan Bond Grange Park Sales

01604 432007

grangepark@oriordanbond.co.uk