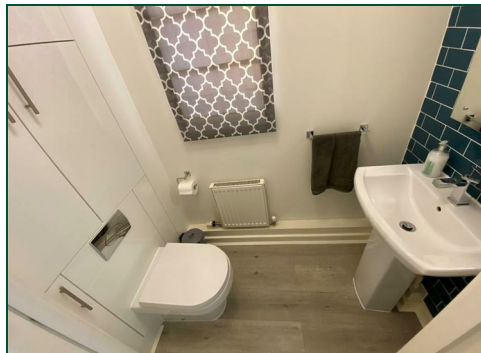




86 Wake Way

Grange Park, Northampton

oriordanbond



86 Wake Way

Grange Park

Northampton NN4 5BF

OFFERS OVER £325,000

An immaculate three bedroom detached home located in the popular area of Grange Park. The property is situated close to the popular Foxfield Country Park and Junction 15 to the M1.

Accommodation comprises entrance hall, cloakroom/WC, sitting room, dining room, kitchen, three first floor bedrooms with an en-suite shower room to the master and a family bathroom. Outside is a driveway to the front providing off road parking for two cars leading to a single garage and an enclosed rear garden with lawn and patio areas. Further benefits include uPVC double glazing, gas radiator heating and solar panels with a feeding tariff. (A/922/M)

Additional information

- Council Tax Band: D
- Energy Efficiency Rating: C

Viewing

Viewing strictly by appointment – details below

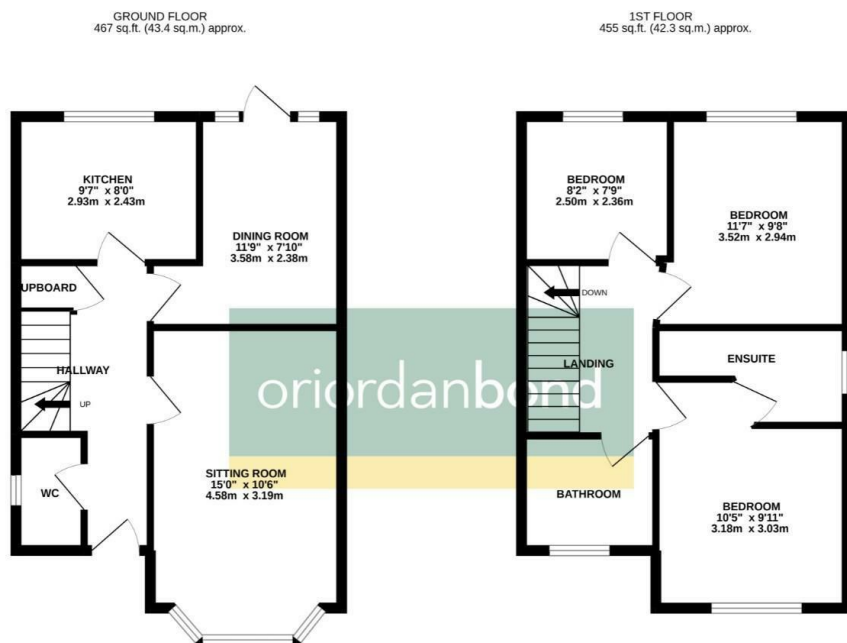
Disclaimer

O'Riordan Bond Estate Agents Limited has not tested apparatus, equipment, fittings or services and so cannot verify they are in working order. The buyer is advised to obtain verification from their solicitor or surveyor.

O'Riordan Bond Grange Park Sales

01604 432007

grangepark@oriordanbond.co.uk



TOTAL FLOOR AREA : 922 sq.ft. (85.6 sq.m.) approx.
Whilst every attempt has been made to ensure the accuracy of the floorplan contained here, measurements of doors, windows, rooms and any other items are approximate and no responsibility is taken for any error, omission or mis-statement. This plan is for illustrative purposes only and should be used as such by any prospective purchaser. The services, systems and appliances shown have not been tested and no guarantee as to their operability or efficiency can be given.
Made with floorplan ©2022