



# John Gray Road

Great Doddington, Northamptonshire

oriordanbond  
SALES & LETTINGS





# John Gray Road

Great Doddington  
NN29 7TX

Price  
£300,000

**A spacious much improved Alfie Underwood three bedroom semi-detached house, set on a large corner plot, with stunning views over open countryside. Located in quiet cul-de-sac, in the sought after village of Great Doddington, this rarely available home has recently undergone improvements to included replacement windows and doors, refitted kitchen, refitted shower room, built-in wardrobes and electric garage door to an oversized garage with WC.**

Accommodation comprises entrance hall, sitting/dining room, re-fitted kitchen with Quartz work tops, extensive cupboards and built-in appliances, first floor landing, master bedroom with an extensive range of newly fitted wardrobes, second double bedroom with stunning views over countryside, third bedroom with fitted wardrobes and a re-fitted shower room. Outside is an open plan block paved driveway to the front leading to an oversized garage with electric door. To the rear is a large mature enclosed garden with views over fields to the rear, a patio area, lawn with flower borders, summerhouse and vegetable garden. The oversized garage has light and power with a utility area ideal for converting into study/gym. Further benefits include gas radiator heating and newly replaced uPVC windows and doors. (A/884/M)

- Much improved semi-detached family home
- Re-fitted kitchen
- Re-fitted shower room
- Gas radiator heating
- Enclosed rear garden with summerhouse
- Off road parking and oversized garage with electric door









#### Additional information

- Council Tax Band: C
- Energy Efficiency Rating:

#### Viewing

Viewing strictly by appointment – details below

#### Disclaimer

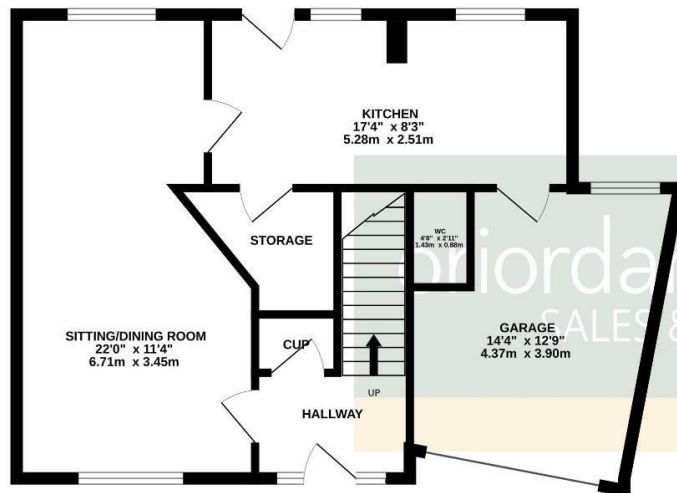
O'Riordan Bond Estate Agents Limited has not tested apparatus, equipment, fittings or services and so cannot verify they are in working order. The buyer is advised to obtain verification from their solicitor or surveyor.

**O'Riordan Bond Earls Barton Sales**  
01604 810088

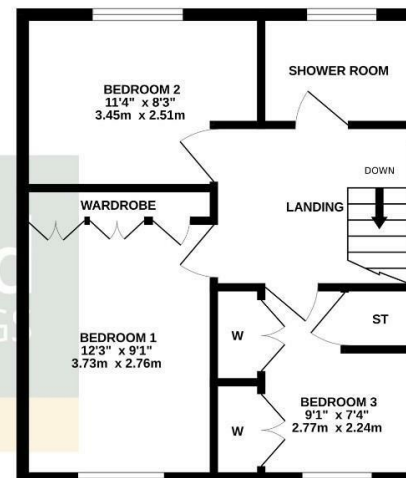
earlsbarton@oriordanbond.co.uk



GROUND FLOOR



1ST FLOOR



SQ FTG DOES NOT INCLUDE GARAGE

TOTAL FLOOR AREA : 884sq.ft. (82.1 sq.m.) approx.

Whilst every attempt has been made to ensure the accuracy of the floorplan contained here, measurements of doors, windows, rooms and any other items are approximate and no responsibility is taken for any error, omission or mis-statement. This plan is for illustrative purposes only and should be used as such by any prospective purchaser. The services, systems and appliances shown have not been tested and no guarantee as to their operability or efficiency can be given.

Made with Metropix ©2025