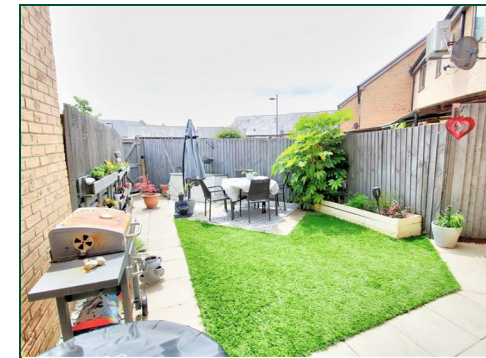
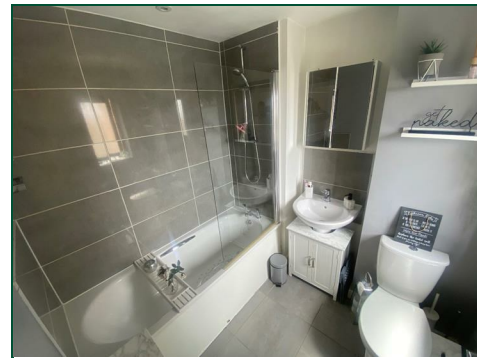




Rounding Mews

Upton,

oriordanbond
SALES & LETTINGS



Rounding Mews

Upton
NN5 4FE

PRICE £270,000

A three bedroom terraced house built by Messrs Keepmoat Homes to their 'Alston' design situated in the popular Upton area. The property is within walking distance to the popular Upton Country Park, Sixfields Retail Park and provides good access to the M1 road network.

Accommodation comprises entrance hall, cloakroom/WC, dual aspect sitting room, good size kitchen/dining room with built-in appliances and a utility cupboard. To the first floor is a dual aspect master bedroom, two further bedrooms and a family bathroom. Externally to the rear is an enclosed garden with gated rear access, paved patio and artificial lawn areas. There is also a secure gated parking area with two allocated spaces. Further benefits include uPVC double glazing and gas radiator heating. (B/1011/S)

Additional information

- Council Tax Band: C
- Energy Efficiency Rating: B

Viewing

Viewing strictly by appointment – details below

Disclaimer

O'Riordan Bond Estate Agents Limited has not tested apparatus, equipment, fittings or services and so cannot verify they are in working order. The buyer is advised to obtain verification from their solicitor or surveyor.

O'Riordan Bond Duston Sales
01604 589007

duston@oriordanbond.co.uk

