



(Plot 31) 33 Grand Union Way

Weedon, Northamptonshire

oriordanbond
TOWN & COUNTRY



(Plot 31) 33 Grand Union Way

Weedon

NN7 4QD

PRICE £595,000

The Morton is the largest of the four bedroom house types with four double bedrooms, two with en-suites, and superb views over the canal. Occupies a large plot with accommodation extending to 2100 square feet.

Entrance hall with cloaks cupboard and downstairs/WC, study, sitting room with bi-folding doors to the rear garden, separate dining room, study, kitchen/family room with bi-folding doors to rear garden, utility room, landing, master bedroom with dressing room and en-suite, guest bedroom with en-suite, third double bedroom, fourth double bedroom and family bathroom/WC with separate shower. Benefits include gas radiator heating, double glazing, driveway with off road parking leading to the detached double garage. (A/2100/L)

Additional information

- Council Tax Band:
- Energy Efficiency Rating:

Viewing

Viewing strictly by appointment – details below

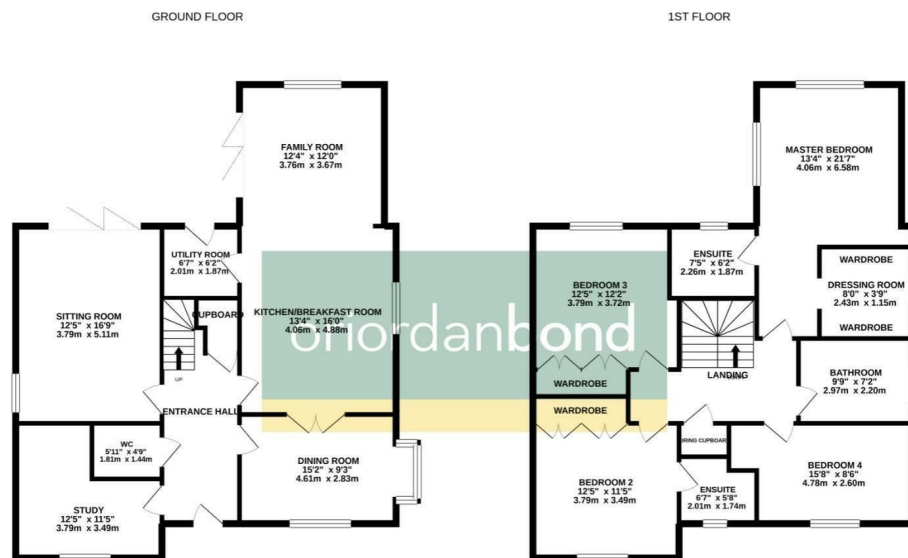
Disclaimer

O'Riordan Bond Estate Agents Limited has not tested apparatus, equipment, fittings or services and so cannot verify they are in working order. The buyer is advised to obtain verification from their solicitor or surveyor.

O'Riordan Bond Town and Country Sales

01604 766007

tandcnpton@oriordanbond.co.uk



TOTAL FLOOR AREA: 2100sq.ft. (195.1 sq.m.) approx.

While every attempt has been made to ensure the accuracy of the floorplan contained here, measurements of doors, windows, rooms and any other items are approximate and no responsibility is taken for any error, omission or mis-statement. This plan is for illustrative purposes only and should be used as such by any prospective purchaser. The services, systems and appliances shown have not been tested and no guarantee as to their operability or efficiency can be given.

Made with Metreage ©2021