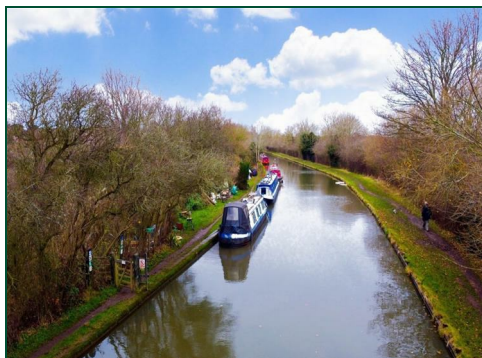




**16 Grand Union Way**  
Weedon, Northamptonshire

**oriordanbond**  
TOWN & COUNTRY





## 16 Grand Union Way

Weedon

NN7 4QD

PRICE £495,000

This spacious detached home occupies a plot with views towards the canal. The Alston is a roomy four bedroom two en-suite family home with accommodation extending to 1585 square feet.

Hallway, cloakroom/WC, study, dual aspect sitting room with bi-folding doors to the rear garden, kitchen/dining room with built-in appliances and bi-folding doors to rear garden, utility room, landing, master bedroom with dressing room and en-suite, guest bedroom with en-suite, two further good size bedrooms and family bathroom/WC. Benefits include gas radiator heating, double glazing and two car parking spaces and single garage. (A/1585/M)

### Additional information

- Council Tax Band:
- Energy Efficiency Rating:

### Viewing

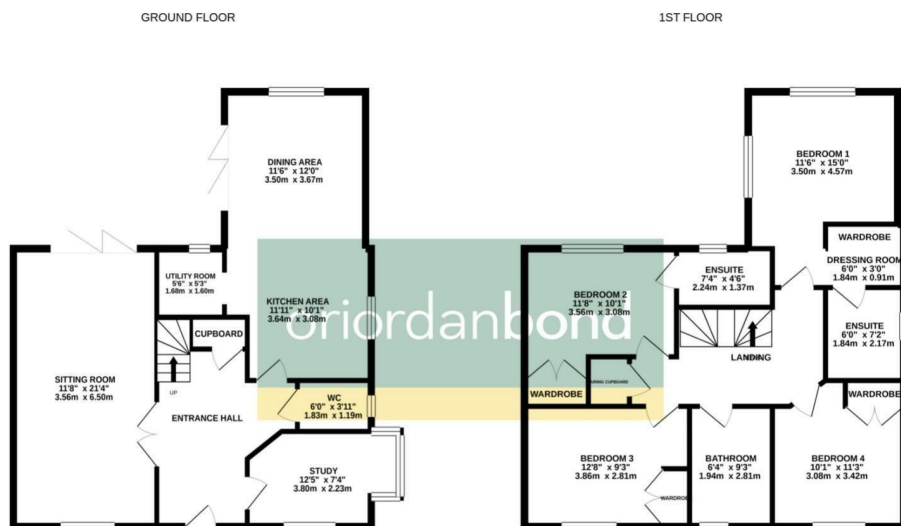
Viewing strictly by appointment – details below

### Disclaimer

O'Riordan Bond Estate Agents Limited has not tested apparatus, equipment, fittings or services and so cannot verify they are in working order. The buyer is advised to obtain verification from their solicitor or surveyor.

O'Riordan Bond Town and Country Sales  
01604 766007

tandcnorthampton@oriordanbond.co.uk



TOTAL FLOOR AREA - 1585sq.ft. (147.3 sq.m.) approx.

While every attempt has been made to ensure the accuracy of the floorplan contained here, measurements of doors, windows, rooms and any other items are approximate and no responsibility is taken for any error, omission or mis-statement. This plan is for illustrative purposes only and should be used as such by any prospective purchaser. The services, systems and appliances shown have not been tested and no guarantee as to their operability or efficiency can be given.

Made with Metropix (2021)