



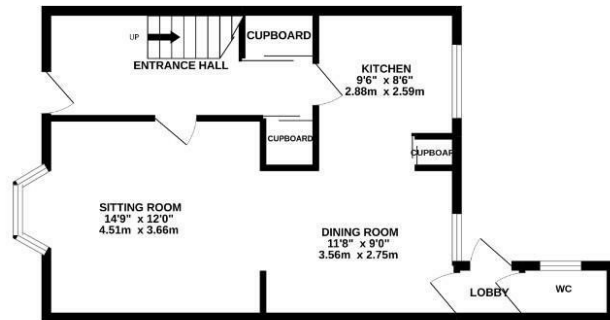
Longueville Court

Lumbertubs, Northampton

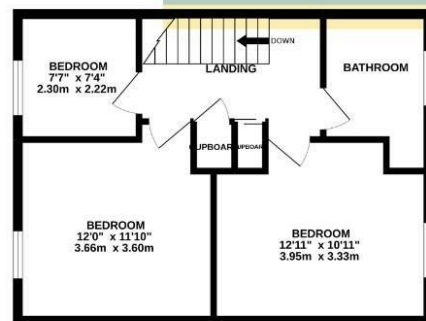
oriordanbond
SALES & LETTINGS



GROUND FLOOR



1ST FLOOR



TOTAL FLOOR AREA : 950 sq.ft. (88.3 sq.m.) approx.

Whilst every attempt has been made to ensure the accuracy of the floorplan contained here, measurements of doors, windows, rooms and any other items are approximate and no responsibility is taken for any error, omission or mis-statement. This plan is for illustrative purposes only and should be used as such by any prospective purchaser. The services, systems and appliances shown have not been tested and no guarantee as to their operability or efficiency can be given.
Made with Metrepro CS022

Longueville Court

Lumbertubs

NN3 8HJ

PRICE £209,995

A modern three bedroom terraced property, situated in the popular Lumbertubs area, close to Weston Favell Shopping Centre and local schools.

The accommodation comprises entrance hall, sitting room, newly re-fitted kitchen open to dining room, cloakroom/WC, three first floor bedrooms and a family bathroom. Outside are gardens to the front and rear and nearby communal parking. Further benefits include uPVC double glazing and a newly installed gas combi boiler. (B/950/M)

Additional information

- Council Tax Band: A
- Energy Efficiency Rating: C

Viewing

Viewing strictly by appointment – details below

Disclaimer

O'Riordan Bond Estate Agents Limited has not tested apparatus, equipment, fittings or services and so cannot verify they are in working order. The buyer is advised to obtain verification from their solicitor or surveyor.

O'Riordan Bond Weston Favell Sales

01604 784007

westonfavell@oriordanbond.co.uk

