



30 Dore Close

The Maltings, Northampton

oriordanbond
SALES & LETTINGS



GROUND FLOOR



1ST FLOOR



30 Dore Close

The Maltings
NN3 8PZ

OFFERS OVER
£100,000

A two bedroom semi-detached property offered to the market in immaculate condition and no onward chain. This home is perfect for a first time buyer or investor and must be seen to be appreciated.

The accommodation comprises of an entrance hall, kitchen/diner, lounge with patio doors to the rear garden, two good sized bedrooms and a modern fitted three piece bathroom. Externally there is a great sized, private rear garden and off road parking for two cars. The property also benefits from uPVC double glazing and a gas-combi boiler. (B/556/M).

Additional information

- Council Tax Band: A
- Energy Efficiency Rating: C

Viewing

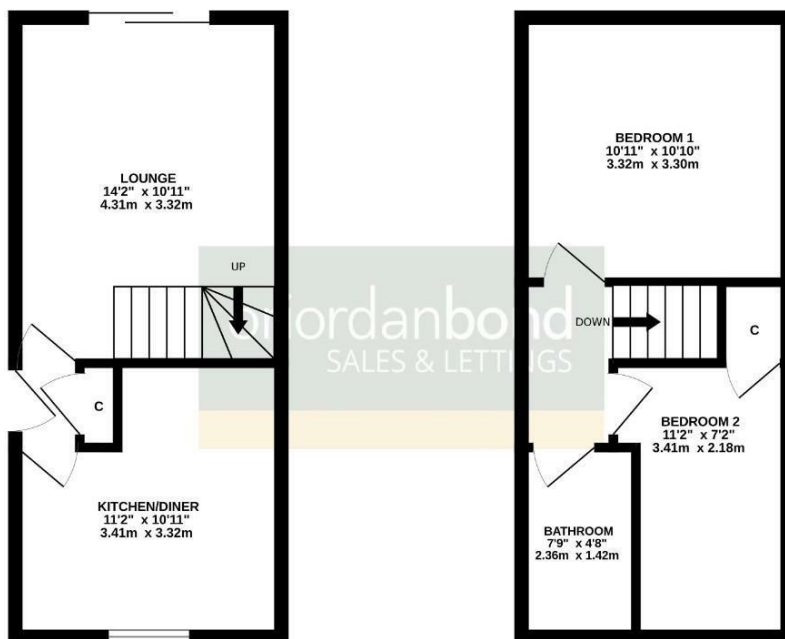
Viewing strictly by appointment – details below

Disclaimer

O'Riordan Bond Estate Agents Limited has not tested apparatus, equipment, fittings or services and so cannot verify they are in working order. The buyer is advised to obtain verification from their solicitor or surveyor.

O'Riordan Bond Weston Favell Sales
01604 784007

westonfavell@oriordanbond.co.uk



TOTAL FLOOR AREA : 552 sq.ft. (51.3 sq.m.) approx.

Whilst every attempt has been made to ensure the accuracy of the floorplan contained herein, measurements of doors, windows, rooms and any other items are approximate and no responsibility is taken for any error, omission or mis-statement. This plan is for illustrative purposes only and should be used as such by any prospective purchaser. The services, systems and appliances shown have not been tested and no guarantee as to their operability or efficiency can be given.
Made with Metaphor 03/23