



Lismore Close

Great Billing, Northampton

oriordanbond
SALES & LETTINGS



Lismore Close

Great Billing
NN3 9HE

Price
£289,995

An immaculately presented two bedroom detached bungalow, situated in the popular location of Great Billing, offered to the market in show home condition with modern stylish interior and driveway with garage.

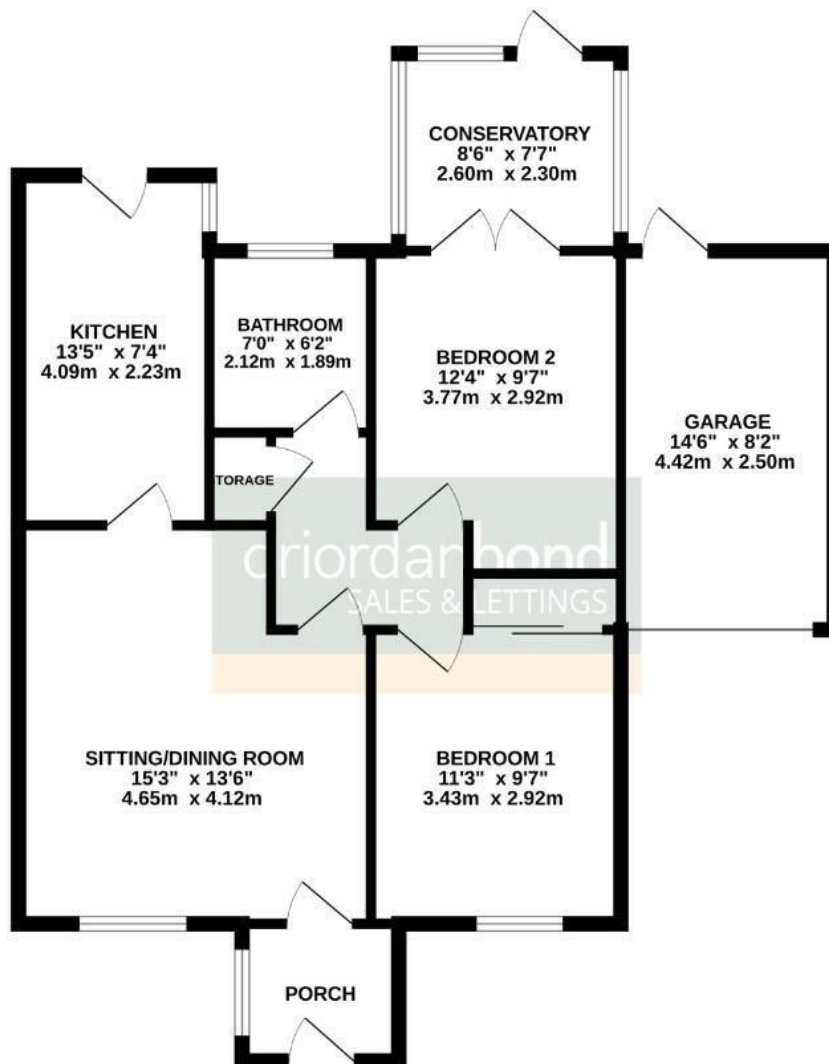
The accommodation comprises entrance hall, sitting/dining room, re-fitted kitchen, conservatory, two bedrooms and a re-fitted bathroom. Outside is a well maintained front garden with driveway providing off road parking leading to a single garage. To the rear is an enclosed garden with shaped lawn with decorative gravelled and shrub borders and a paved pathway. Further benefits include gas radiator heating and uPVC double glazing. (A/831/M)

- Immaculate two bedroom detached bungalow
- Re-fitted kitchen and bathroom
- Conservatory
- Gas radiator heating
- Enclosed rear garden
- Driveway and garage





GROUND FLOOR
831 sq.ft. (77.2 sq.m.) approx.



TOTAL FLOOR AREA : 831 sq.ft. (77.2 sq.m.) approx.

Whilst every attempt has been made to ensure the accuracy of the floorplan contained here, measurements of doors, windows, rooms and any other items are approximate and no responsibility is taken for any error, omission or mis-statement. This plan is for illustrative purposes only and should be used as such by any prospective purchaser. The services, systems and appliances shown have not been tested and no guarantee as to their operability or efficiency can be given.
Made with Metropax 5/2025



Additional information

- Council Tax Band: C
- Energy Efficiency Rating: D

Viewing

Viewing strictly by appointment – details below

Disclaimer

O'Riordan Bond Estate Agents Limited has not tested apparatus, equipment, fittings or services and so cannot verify they are in working order. The buyer is advised to obtain verification from their solicitor or surveyor.

O'Riordan Bond Weston Favell Sales
01604 784007

westonfavell@oriordanbond.co.uk

