



Watermeadow Drive
Watermeadow, Northampton

oriordanbond
SALES & LETTINGS



Watermeadow Drive

Watermeadow

NN3 8PL

PRICE £220,000

A modern three bedroom terraced property, situated in the popular area of Watermeadow, within walking distance to local shops and schooling.

The accommodation comprises entrance porch, sitting room, fitted kitchen/dining room, three good size bedrooms and a family bathroom. Outside is a front garden, an enclosed low maintenance rear garden with decked patio and artificial lawn and a single garage accessed via the rear. Further benefits include uPVC double glazing and gas radiator heating. (B/719/S)

Additional information

- Council Tax Band: B
- Energy Efficiency Rating: D

Viewing

Viewing strictly by appointment – details below

Disclaimer

O'Riordan Bond Estate Agents Limited has not tested apparatus, equipment, fittings or services and so cannot verify they are in working order. The buyer is advised to obtain verification from their solicitor or surveyor.

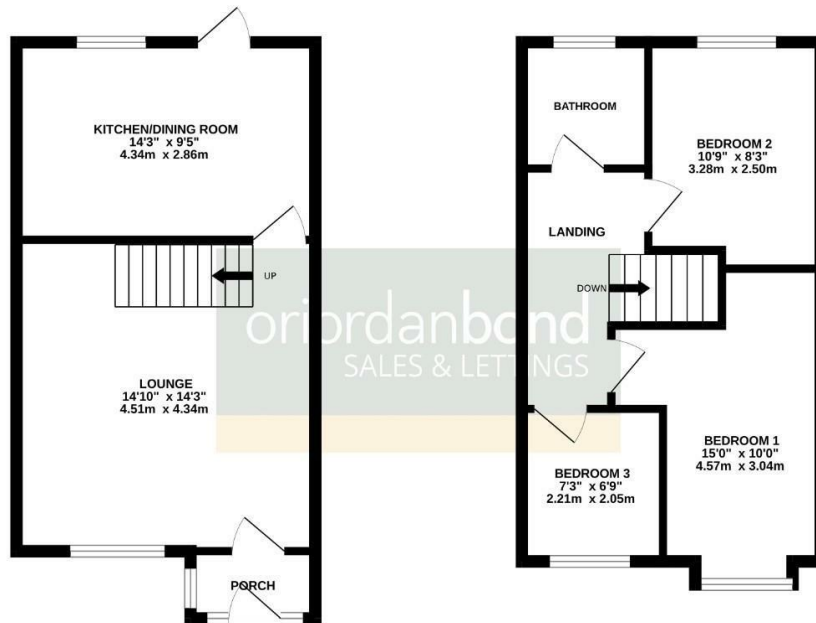
O'Riordan Bond Weston Favell Sales
01604 784007

westonfavell@oriordanbond.co.uk



GROUND FLOOR
363 sq.ft. (33.7 sq.m.) approx.

1ST FLOOR
356 sq.ft. (33.1 sq.m.) approx.



TOTAL FLOOR AREA: 719 sq.ft. (66.8 sq.m.) approx.

Whilst every attempt has been made to ensure the accuracy of the floorplan contained here, measurements of doors, windows, rooms and any other items are approximate and no responsibility is taken for any error, omission or mis-statement. This plan is for illustrative purposes only and should be used as such by any prospective purchaser. The services, systems and appliances shown have not been tested and no guarantee as to their operability or efficiency can be given.
Made with Metreplex 02025