



Entwood Drive

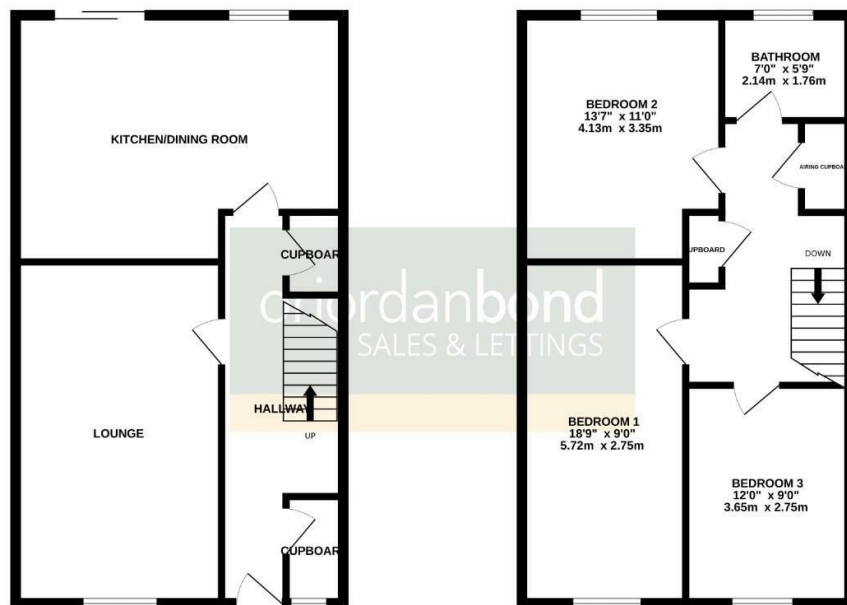
Overstone Lodge, Northampton

oriordanbond
SALES & LETTINGS



GROUND FLOOR
582 sq.ft. (54.1 sq.m.) approx.

1ST FLOOR
582 sq.ft. (54.1 sq.m.) approx.



TOTAL FLOOR AREA: 1165 sq.ft. (108.2 sq.m.) approx.
Whilst every attempt has been made to ensure the accuracy of the floorplan contained here, measurements of doors, windows, rooms and any other items are approximate and no responsibility is taken for any error, omission or mis-statement. This plan is for illustrative purposes only and should be used as such by any prospective purchaser. The services, systems and appliances shown have not been tested and no guarantee as to their operability or efficiency can be given.
Made with Metagap C3025

Entwood Drive

Overstone Lodge

NN3 8SH

OFFERS OVER £210,000

A substantial mid terrace property situated in this sought after location in popular Overstone Lodge. With gas central heating and private off street parking.

The accommodation comprises entrance hall, cloakroom, sitting room, kitchen/dining room. The first floor offers three double bedrooms and a family bathroom. Outside is an enclosed low maintenance rear garden with gated rear access and low maintenance frontage with driveway providing off road parking. Further benefits include uPVC double glazing and gas radiator heating.

Additional information

- Council Tax Band: A
- Energy Efficiency Rating: C

Viewing

Viewing strictly by appointment – details below

Disclaimer

O'Riordan Bond Estate Agents Limited has not tested apparatus, equipment, fittings or services and so cannot verify they are in working order. The buyer is advised to obtain verification from their solicitor or surveyor.

O'Riordan Bond Weston Favell Sales

01604 784007

westonfavell@oriordanbond.co.uk

