



The Headlands

The Headlands, Northampton

oriordanbond
SALES & LETTINGS



The Headlands

The Headlands

NN3 2NU

GUIDE PRICE £300,000

O'Riordan Bond is pleased to offer to the market this immaculate three bedroom semi-detached home with no onward chain. This property has been improved by the current owners and benefits from being set on a corner plot with double garage.

Accommodation comprises porch, entrance hall, cloakroom/WC, sitting room with feature bay window and wood burning stove, open plan kitchen/dining room with wood burning stove, three first floor bedrooms and a family bathroom. Outside is a low maintenance front garden with low level retaining wall and gated access to the rear garden which is mainly laid to lawn with paved patio and timber enclosed fence. Further benefits include a detached double garage with two electric roller doors with off road parking for at least two cars, uPVC double glazing and gas radiator heating. (A/1008/L)

Additional information

- Council Tax Band: C
- Energy Efficiency Rating:

Viewing

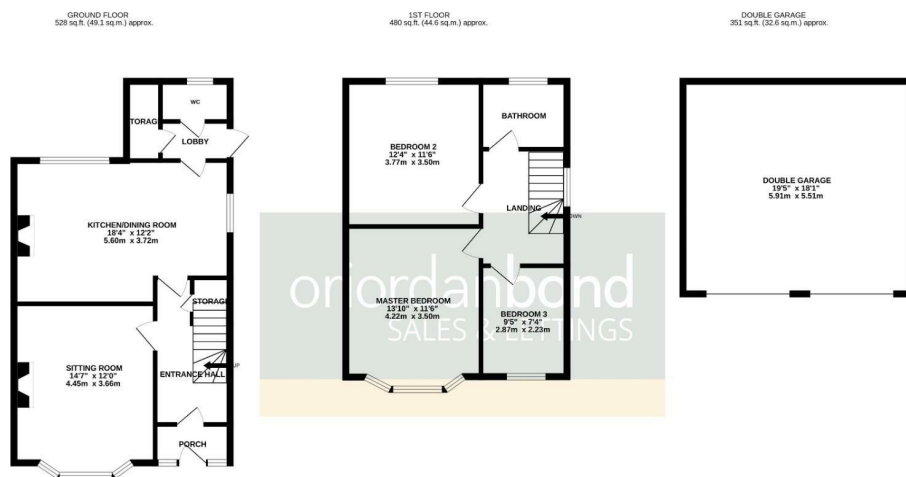
Viewing strictly by appointment – details below

Disclaimer

O'Riordan Bond Estate Agents Limited has not tested apparatus, equipment, fittings or services and so cannot verify they are in working order. The buyer is advised to obtain verification from their solicitor or surveyor.

O'Riordan Bond Abington East Sales
01604 639007

abingtoneast@oriordanbond.co.uk



TOTAL SQUARE FOOTAGE EXCLUDES DOUBLE GARAGE
TOTAL FLOOR AREA: 1008sq.ft. (93.6 sq.m.) approx.
Whilst every attempt has been made to ensure the accuracy of the floorplan contained herein, measurements of doors, windows, rooms and any other items are approximate and no responsibility is taken for any error, omission or mis-statement. This plan is for illustrative purposes only and should be used as such by any prospective purchaser. The services, systems and appliances shown have not been tested and no guarantee as to their operability or efficiency can be given.
Made with Metagrip C2025

