



St. Matthews Parade

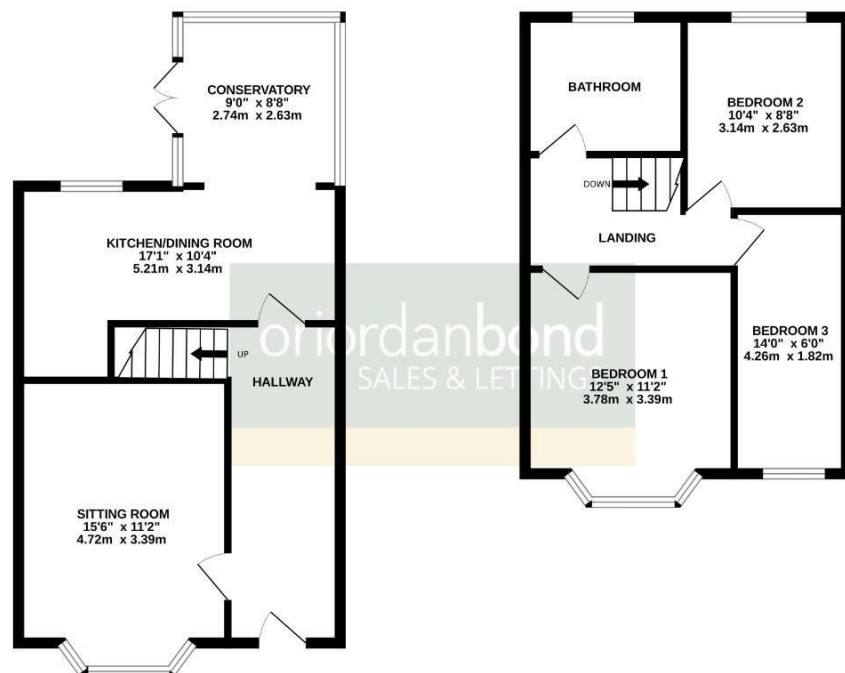
Kingsley, Northampton

oriordanbond
SALES & LETTINGS



GROUND FLOOR

1ST FLOOR



TOTAL FLOOR AREA: 925 sq.ft. (86.0 sq.m.) approx.

Whilst every attempt has been made to ensure the accuracy of the floorplan contained here, measurements of doors, windows, stairs and any other items are approximate and no responsibility is taken for any error, omission or mis-statement. This plan is for illustrative purposes only and should be used as such by any prospective purchaser. The services, systems and appliances shown have not been tested and no guarantee as to their operability or efficiency can be given.

Made with Metreplan 2.0.0.0

St. Matthews Parade

Kingsley
NN2 7HD

GUIDE PRICE £220,000

A 1930's double bay fronted three bedroom end terraced home with double garage. Offered for sale with no onward chain, the property is located close to The Racecourse and many local surrounding schools.

The accommodation comprises entrance hall, bay fronted sitting room, kitchen/dining room, conservatory, three first floor bedrooms and a family bathroom. Outside is a good size front garden, a low maintenance rear garden in excess of 100ft and a double garage accessed via a rear service road. Further benefits include uPVC double glazing and gas radiator heating serviced via a Vaillant combi boiler. (C/926/L)

Additional information

- Council Tax Band: C
- Energy Efficiency Rating: D

Viewing

Viewing strictly by appointment – details below

Disclaimer

O'Riordan Bond Estate Agents Limited has not tested apparatus, equipment, fittings or services and so cannot verify they are in working order. The buyer is advised to obtain verification from their solicitor or surveyor.

O'Riordan Bond Abington Sales
01604 639007

abington@oriordanbond.co.uk

