



16 Bowthorpe Close

Abington Vale, Northampton

oriordanbond
SALES & LETTINGS



16 Bowthorpe Close

Abington Vale

NN3 3EJ

PRICE £235,000

A superbly presented property situated in this cul-de-sac location within Abington Vale. Offered for sale with a complete chain.

Accommodation comprises extended porch, sitting room with hard wood flooring, spotlights and a feature wall with downlighters, re-fitted kitchen/dining room with some integrated appliances, three first floor bedrooms (two with built-in wardrobes) and a re-fitted family shower room. Outside is a block paved driveway to the front and a southerly facing rear garden with patio and garage to the rear. Further benefits include uPVC double glazing with high strength front door, gas radiator heating with combination boiler and external wall insulation throughout. (A/722/M)

Additional information

- Council Tax Band: B
- Energy Efficiency Rating: C

Viewing

Viewing strictly by appointment – details below

Disclaimer

O'Riordan Bond Estate Agents Limited has not tested apparatus, equipment, fittings or services and so cannot verify they are in working order. The buyer is advised to obtain verification from their solicitor or surveyor.

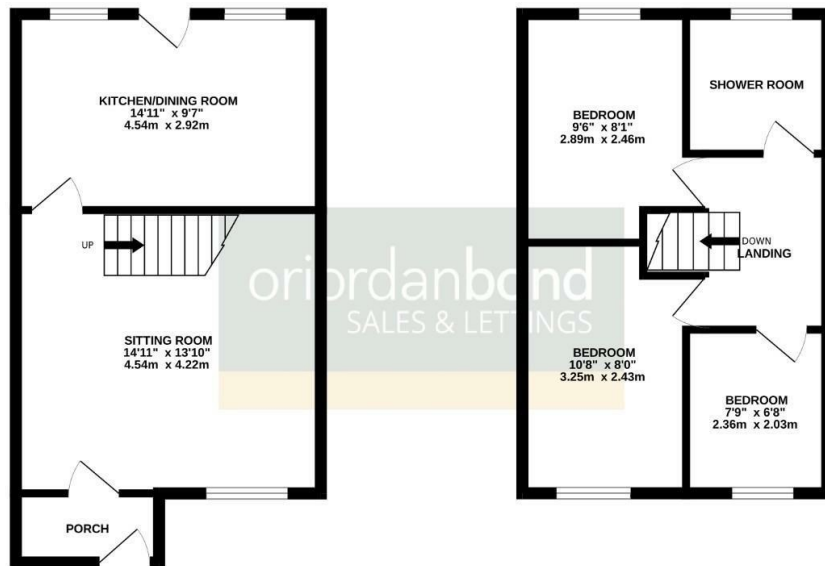
O'Riordan Bond Abington Sales

01604 639007

abington@oriordanbond.co.uk

GROUND FLOOR

1ST FLOOR



TOTAL FLOOR AREA: 722 sq. ft. (67.1 sq. m.) approx.

Whilst every attempt has been made to ensure the accuracy of the floorplan contained here, measurements of doors, windows, rooms and any other items are approximate and no responsibility is taken for any error, omission or mis-statement. This plan is for illustrative purposes only and should be used as such by any prospective purchaser. The services, systems and appliances shown have not been tested and no guarantee as to their operability or efficiency can be given.
Made with Metropix ©2023