



Chaucer Street

Poets Corner, Northampton

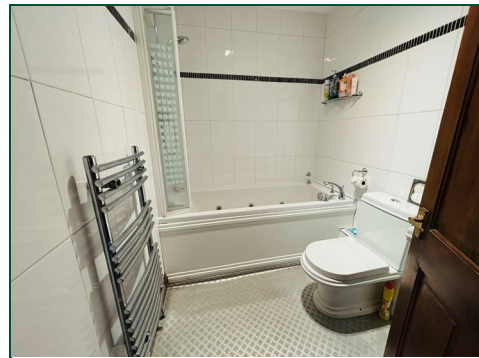
oriordanbond
SALES & LETTINGS



GROUND FLOOR



1ST FLOOR



Chaucer Street

Poets Corner

NN2 7HN

PRICE £259,995

O'Riordan Bond is delighted to offer for sale this impressive three bedroom terraced property located in sought after Poets Corner within Kingsley. Whilst ostensibly this property fits in with its predominantly Victorian surroundings, this property was actually built approximately 27 years ago and benefits from modern fittings.

The accommodation comprises entrance porch open plan sitting/dining room, a contemporary kitchen with a comprehensive range of built-in appliances, three first floor bedrooms and a three-piece family bathroom with whirlpool bath. Outside is a beautiful southerly facing rear garden laid mainly to lawn with a pretty summerhouse at one end. Further benefits include gas radiator heating and uPVC double glazing. (A/878/M)

Additional information

- Council Tax Band: B
- Energy Efficiency Rating: C

Viewing

Viewing strictly by appointment – details below

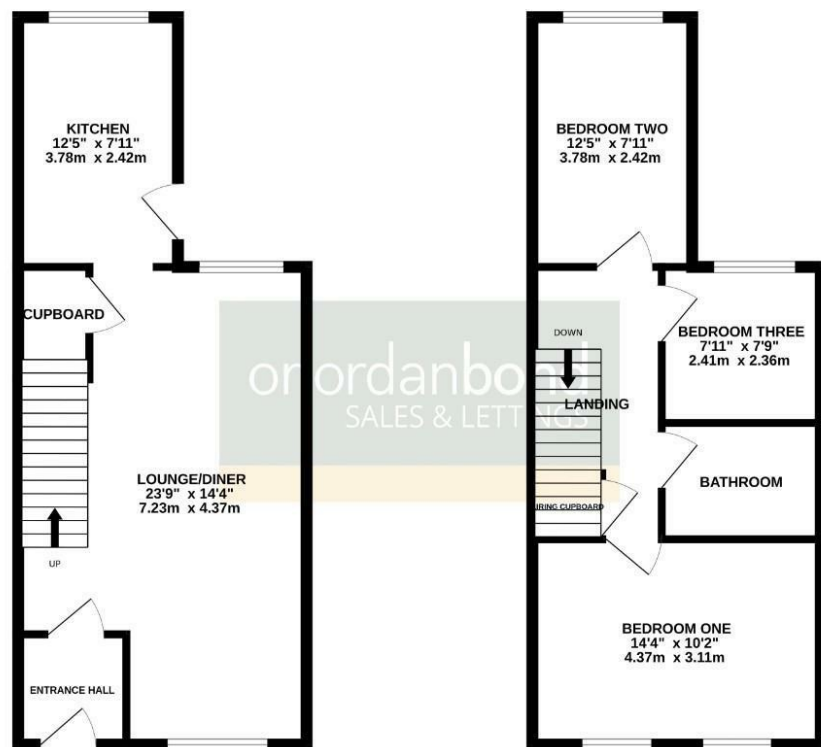
Disclaimer

O'Riordan Bond Estate Agents Limited has not tested apparatus, equipment, fittings or services and so cannot verify they are in working order. The buyer is advised to obtain verification from their solicitor or surveyor.

O'Riordan Bond Abington Sales

01604 639007

abington@oriordanbond.co.uk



TOTAL FLOOR AREA : 878 sq ft. (81.6 sq.m.) approx.
Whilst every attempt has been made to ensure the accuracy of the floorplan contained here, measurements of doors, windows, rooms and any other feature are approximate and no responsibility is taken for any error, omission or mis-statement. This plan is for illustrative purposes only and should be used as such by any prospective purchaser. The services, systems and appliances shown have not been tested and no guarantee as to their operability or efficiency can be given.
Made with Homestyler 5/2025

