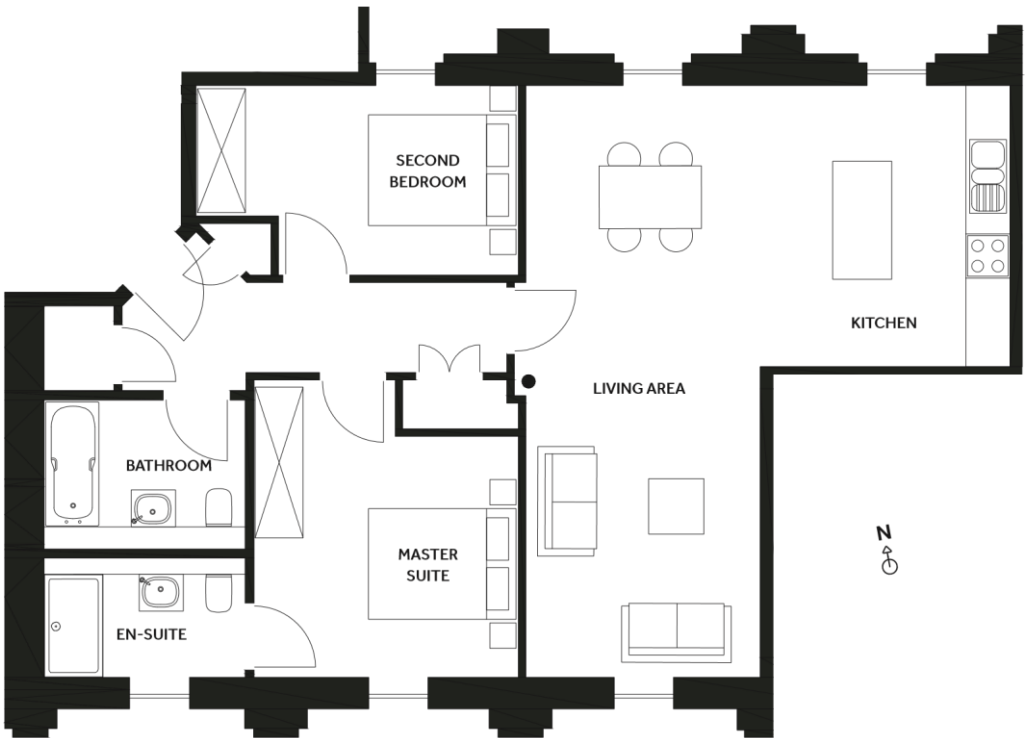


FLAT 17

Total Area 87sqm / 936sqft
 Living Area / Kitchen 6.37m x 8.10m
 Master Suite 4.16m x 2.95m
 Second Bedroom 3.58m x 3.80m

FLAT 19

Total Area 88sqm / 947sqft
 Living Area / Kitchen 6.37m x 8.41m
 Master Suite 4.35m x 3.03m
 Second Bedroom 3.67m x 4.01m



● Structural Columns

☒ Wardrobes

THE BREAD FACTORY

Please contact a member of our sales team:

MILES & BARR

James Perks

jamesperks@milesandbarr.co.uk

+44 (0) 1843 570 500

thebreadfactoryramsgate.com

MISREPRESENTATION ACT

This brochure, the description, imagery and measurements therein do not form part of any contract and whilst every effort has been made to ensure accuracy, this cannot be guaranteed.

HARRISS