

Plot 1, 4 bedroom detached

Living 4.3m x 4.3m

Dining 3.85m x 2.85m

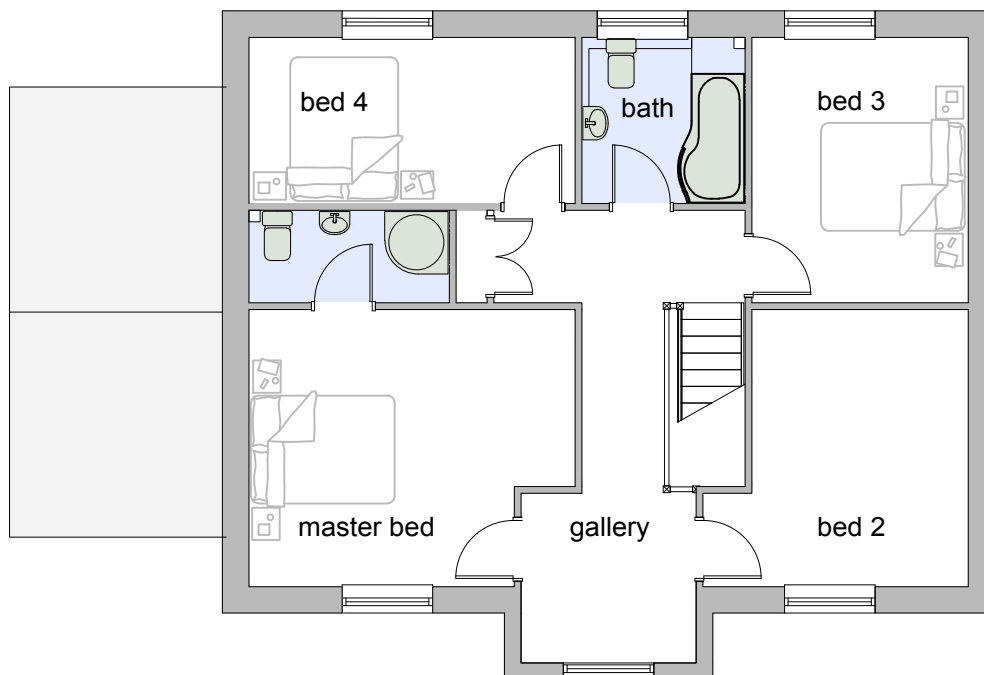
Kitchen 5.58m x 2.52m

Utility 2.55m x 1.65m

Study 2.8m x 2.5m

Cloakroom

Note, All dimensions taken at widest points



Master bedroom 4.3m x 3.66m

En-suite

Bed 2 3.66m x 3.5m

Bed 3 3.5m x 2.85m

Bed 4 4.3m x 2.2m

Bathroom

Gallery

Note, All dimensions taken at widest points