

RAILWAY HOUSE
2 REMPSTONE ROAD
SWANAGE
DORSET
BH19 1DW
Opposite the Steam Railway Station



Tel: 01929 423333
(24 hours)
Web: www.milesandson.co.uk
Email: property@milesandson.co.uk



Newton Manor Close, Swanage, Dorset BH19 1JS

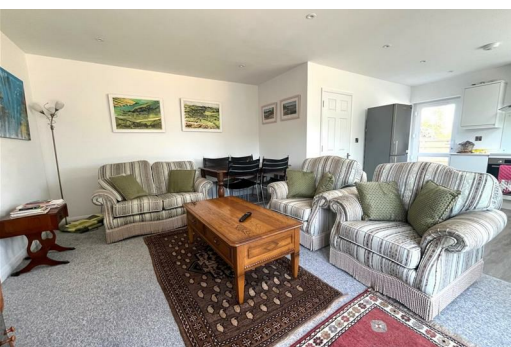
Newly refurbished and extended semi-detached bungalow within a courtyard setting in former Manor grounds. 3 bedrooms (1 en-suite shower room/W.C.), open plan 'L' shaped lounge/diner and kitchen, ground floor bathroom/W.C., gas central heating, double glazing, gardens, parking space.

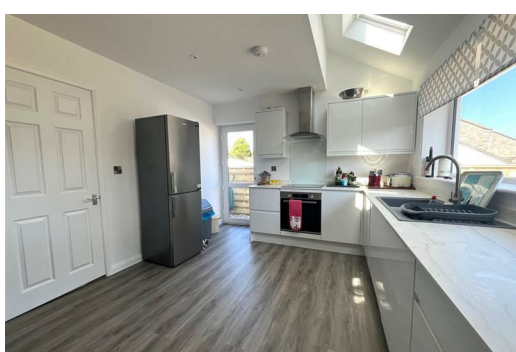
- Newly refurbished and extended semi-detached bungalow
- Ground floor bathroom/W.C.
- Gardens
- Additional unallocated residents parking
- 3 bedrooms (1 en-suite shower room/W.C.)
- Gas central heating
- Allocated parking
- Open plan 'L' shaped lounge/diner and kitchen
- Double glazing
- Courtyard setting within former Manor grounds

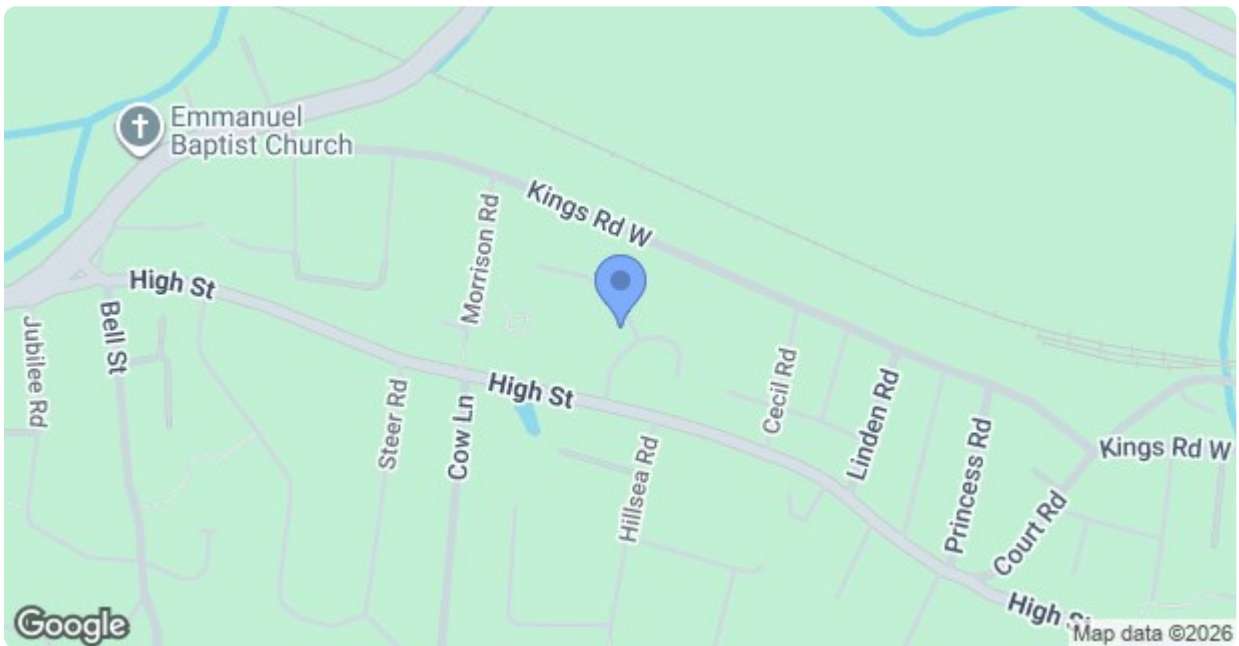
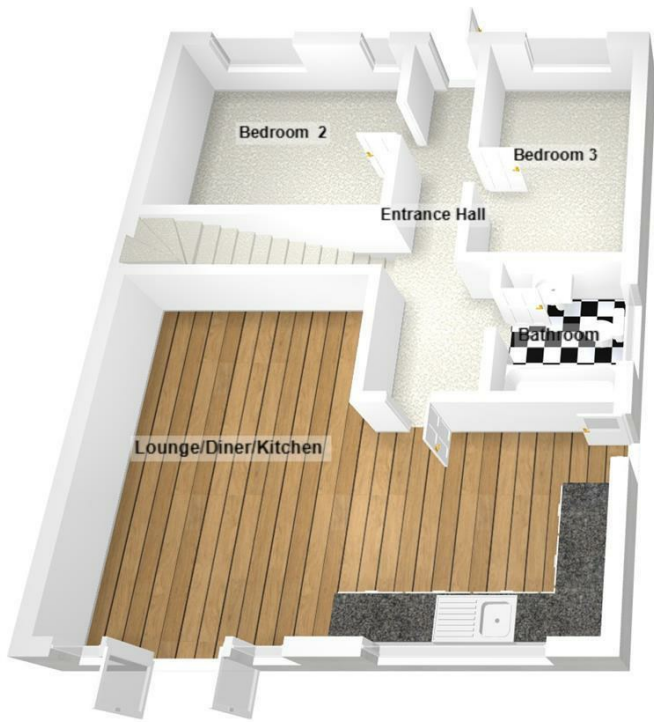
Asking Price £450,000

Newton Manor Close, Swanage, Dorset BH19 1JS

* Awaiting full particulars *







Energy Efficiency Rating		
	Current	Potential
<i>Very energy efficient - lower running costs</i>		
(92 plus) A		
(81-91) B		
(69-80) C		
(55-68) D		
(39-54) E		
(21-38) F		
(1-20) G		
<i>Not energy efficient - higher running costs</i>		
England & Wales	EU Directive 2002/91/EC	