

RAILWAY HOUSE
2 REMPSTONE ROAD
SWANAGE
DORSET
BH19 1DW
Opposite the Steam Railway Station



Tel: 01929 423333
(24 hours)
Web: www.milesandson.co.uk
Email: property@milesandson.co.uk



12 Victoria Avenue, Swanage, Dorset BH19 1AN

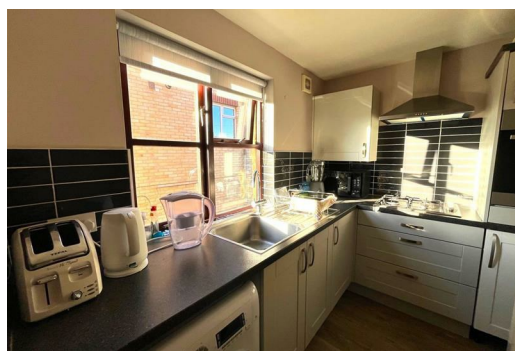
Purpose-built first floor flat in a convenient level position close to town and beach. 2 bedrooms, south facing reception room, kitchen, bathroom/W.C., gas central heating, timber-framed double-glazed windows, allocated parking, communal garden. No forward chain.

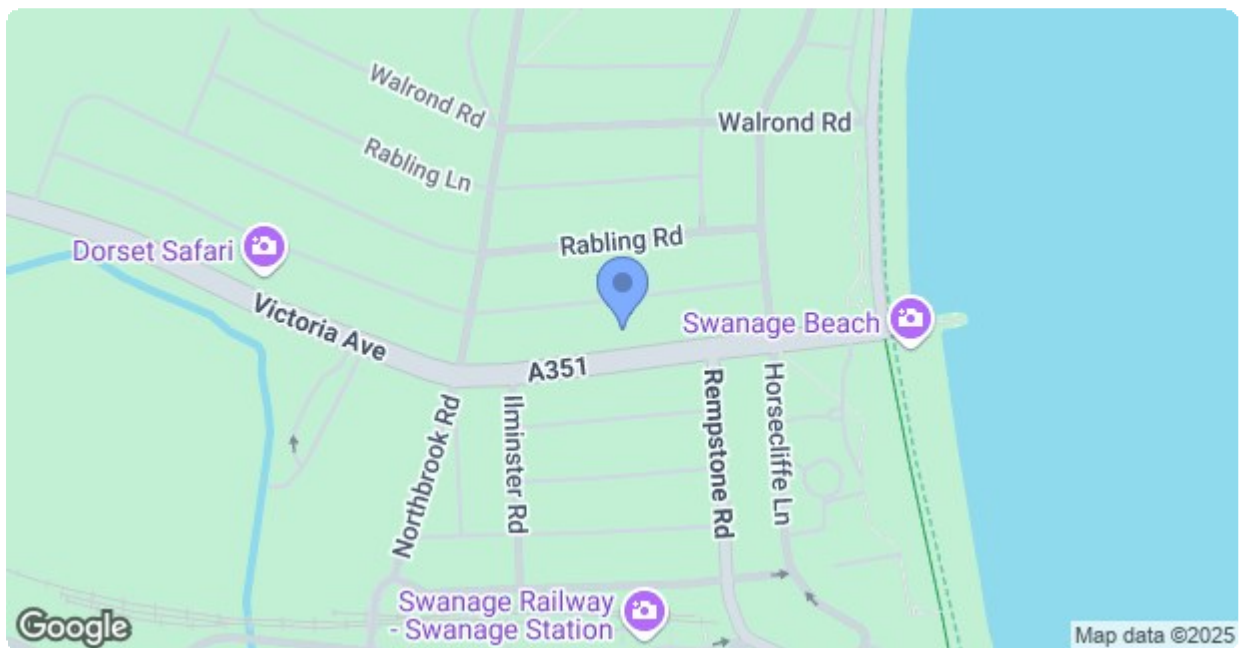
- Purpose-built first floor flat
- Kitchen
- Timber framed double-glazed windows
- NO FORWARD CHAIN!
- 2 bedrooms
- Bathroom/W.C.
- Allocated parking space
- South facing reception room
- Gas central heating
- Communal front garden

Asking Price £234,950

12 Victoria Avenue, Swanage, Dorset BH19 1AN







Energy Efficiency Rating		
	Current	Potential
Very energy efficient - lower running costs		
(92 plus) A		
(81-91) B		
(69-80) C		
(55-68) D		
(39-54) E		
(21-38) F		
(1-20) G		
Not energy efficient - higher running costs		
England & Wales	EU Directive 2002/91/EC	