

RAILWAY HOUSE  
2 REMPSTONE ROAD  
SWANAGE  
DORSET  
BH19 1DW  
*Opposite the Steam Railway Station*



Tel: 01929 423333  
(24 hours)  
Web: [www.milesandson.co.uk](http://www.milesandson.co.uk)  
Email: [property@milesandson.co.uk](mailto:property@milesandson.co.uk)



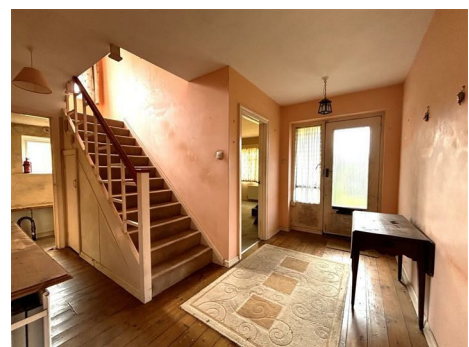
### **Battlemead, Swanage, Dorset BH19 1PH**

Detached chalet bungalow in a sought-after residential position half mile North of Swanage centre. 3 bedrooms (1 ground floor), lounge/diner, kitchen, ground floor bathroom/W.C., gas central heating. In need of extensive refurbishment. Approx. 0.16 acre plot with front and rear gardens, garage and driveway parking. **NO FORWARD CHAIN!**

- Detached chalet bungalow
- Kitchen
- West facing rear garden. Front garden
- No forward chain
- 3 bedrooms (1 ground floor)
- Ground floor bathroom/W.C.
- Garage and driveway parking
- Lounge/diner
- Gas central heating
- In need of extensive refurbishment

**Guide Price £595,000**

Battlemead, Swanage, Dorset BH19 1PH







Energy Efficiency Rating		
	Current	Potential
<i>Very energy efficient - lower running costs</i>		
(92 plus) <b>A</b>		
(81-91) <b>B</b>		
(69-80) <b>C</b>		
(55-68) <b>D</b>		
(39-54) <b>E</b>		
(21-38) <b>F</b>		
(1-20) <b>G</b>		
<i>Not energy efficient - higher running costs</i>		
<b>England &amp; Wales</b>	EU Directive 2002/91/EC	