



The Lakes

Kent ME20 6GF

Price Guide £375,000



44 The Lakes

Kent ME20 6GF

CHAIN FREE – GUIDE PRICE £375,000–
£385,000

This well-presented three-bedroom townhouse is situated in the ever-popular Leybourne Lakes development.

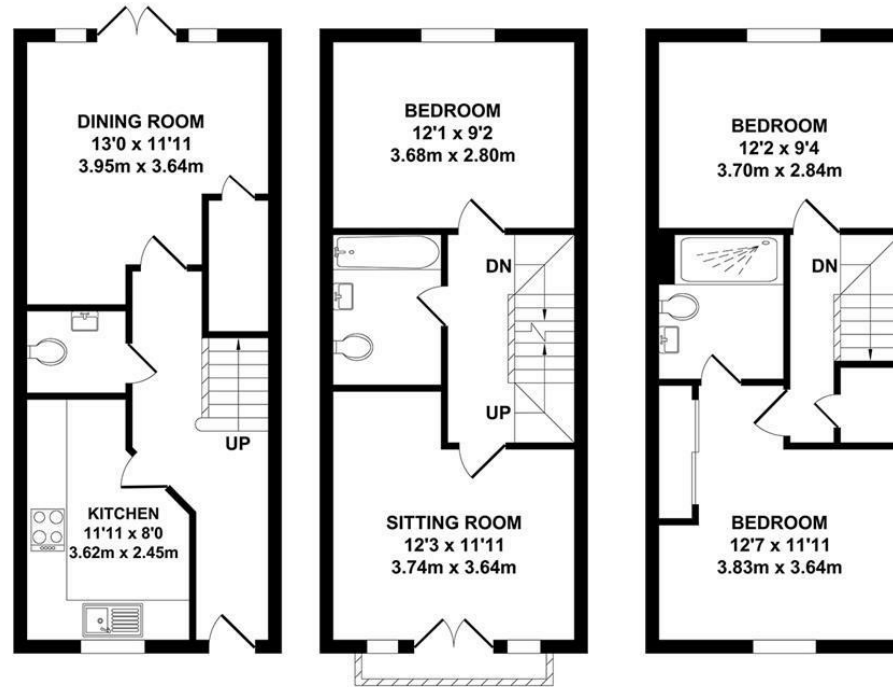
Set over three floors, this family home offers versatile living accommodation. On the ground floor, the property comprises a kitchen, downstairs WC, and dining room with double doors opening onto the garden.

The first floor features a lounge with views over the lake opposite, a third bedroom, and a family bathroom.

The top floor benefits from a spacious main bedroom with en suite and a generously sized second bedroom.

Externally, the property boasts a low-maintenance rear garden and allocated parking





GROUND FLOOR
APPROX. FLOOR AREA
353 SQ.FT.
(32.76 SQ.M.)

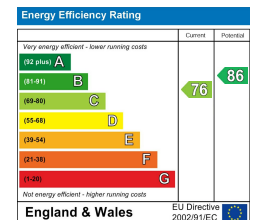
FIRST FLOOR
APPROX. FLOOR AREA
353 SQ.FT.
(32.76 SQ.M.)

SECOND FLOOR
APPROX. FLOOR AREA
353 SQ.FT.
(32.76 SQ.M.)

TOTAL APPROX. FLOOR AREA 1058 SQ.FT. (98.28 SQ.M.)

Whilst every attempt has been made to ensure the accuracy of the floor plan contained here, measurements of doors, windows, rooms and any other items are approximate and no responsibility is taken for any error, omission or mis-statement. This plan is for illustrative purposes only and should be used as such by any prospective purchaser. The services, systems and appliances shown have not been tested and no guarantee as to their operability or efficiency can be given.

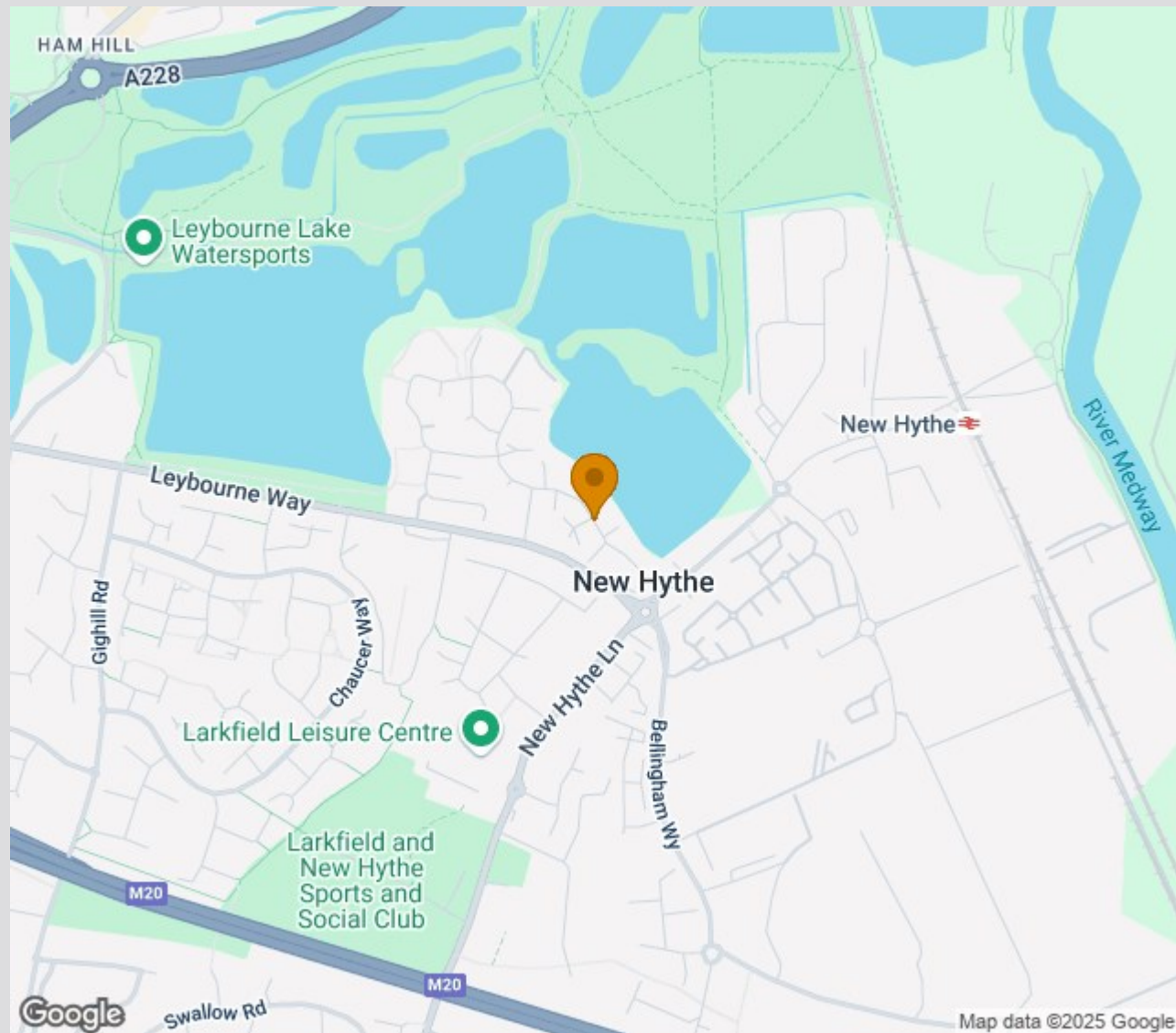
Zome Media ©2025







Location Map



TO VIEW CONTACT:

01732 522 822

info@khp.me

www.khp.me

