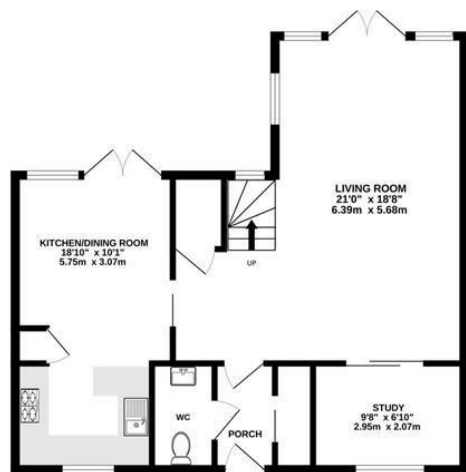
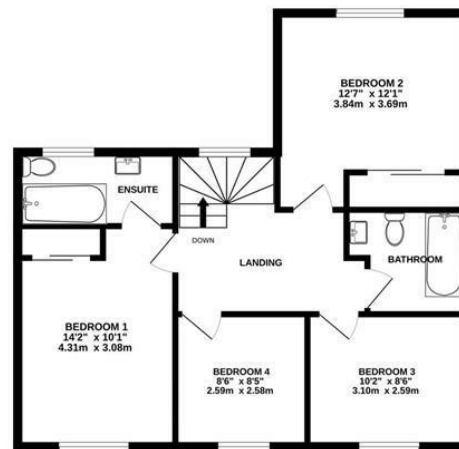


GROUND FLOOR
650 sq.ft. (60.4 sq.m.) approx.



1ST FLOOR
650 sq.ft. (60.4 sq.m.) approx.



TOTAL FLOOR AREA : 1299 sq.ft. (120.7 sq.m.) approx.

Whilst every attempt has been made to ensure the accuracy of the floorplan contained here, measurements of doors, windows, rooms and any other items are approximate and no responsibility is taken for any error, omission or mis-statement. This plan is for illustrative purposes only and should be used as such by any prospective purchaser. The services, systems and appliances shown have not been tested and no guarantee as to their operability or efficiency can be given.
Made with Metropix 1/2025



01732 522 822
info@khp.me



Shoemith Lane
Kings Hill ME19 4FF
£2,100 PCM

Tenure:

Council tax band: G



A very well presented 4 bedroom family home in the Discovery School catchment and close to woodland walks and local amenities.

Internally comprising entrance hall, cloakroom WC / utility room, sitting room, study, high specification modern kitchen / dining area. To the first floor there is a main bedroom complete with en suite bathroom. Three further bedrooms and a family bathroom. Further benefits include shutters throughout.

Externally there are low maintenance gardens. Single garage and additional parking for a further vehicle. Viewing comes highly recommended.

Small pets considered at £25pcm per pet. Available from 14th August 2025.

- Four Bedroom
- Large Family Home
- Open Plan Living Accommodation
- Kitchen / Breakfast Room
- Study
- En Suite to Main Bedroom
- Family Bathroom
- Low Maintenance Rear Garden
- Garage & Parking Space
- Available from 8th August 2025

Energy Efficiency Rating		Environmental Impact (CO ₂) Rating			
	Current	Potential		Current	Potential
Very energy efficient - lower running costs			Very environmentally friendly - lower CO ₂ emissions		
(92 plus) A			(92 plus) A		
(81-91) B			(81-91) B		
(69-80) C			(69-80) C		
(55-68) D			(55-68) D		
(48-54) E			(48-54) E		
(39-47) F			(39-47) F		
(31-38) G			(31-38) G		
(1-20)			(1-20)		
Not energy efficient - higher running costs			Not environmentally friendly - higher CO ₂ emissions		
England & Wales	EU Directive 2002/91/EC		England & Wales	EU Directive 2002/91/EC	



LOCAL INFORMATION FOR KINGS HILL

Kings Hill is a modern, concept village situated in the heart of Kent that entwines quality of life, convenience and charm to create one of the most desirable places to live and bring up a family in England. Nestled amongst attractive, landscaped gardens and protected woodland areas the Management team at Kings Hill provides landscaping and maintenance for the local residents, which means that the area is safe, clean and consistently maintained to a high standard. This American-style of "concept living" has proven very popular and it engenders a strong sense of community among the local residents. Kings Hill offers excellent commuting facilities with easy access to the M20, a regular bus service to the nearby towns of Tonbridge, Maidstone and West Malling, as well as a direct bus service to West Malling station, where trains run to London Victoria and Ashford International. The station is less than 1 mile away. Kings Hill has its own toddlers group, a pre-school nursery, three highly coveted primary schools and a youth club. The range of sports and leisure facilities are excellent. It includes shops, cafes, restaurants, 18-hole PGA championship golf course, David Lloyd health club, sports park, community centre, nature park and much more. Two miles away is the beautiful town of West Malling and all within ten miles are Royal Tunbridge Wells, Maidstone, Tonbridge and Paddock Wood. Staying closer to home Kings Hill offers Liberty Square - the hub of the village, where there is Asda and Waitrose supermarkets, eateries and further amenities (such as hairdressers, pharmacy, doctors, dentist and much more) can be found.

DISCLAIMER

All dimensions are approximate and any floor plans are for guidance purposes only. Reference to appliances and/or services does not imply that they are necessarily in working order. Whilst we endeavor to make our Lettings particulars as accurate as possible, all interested parties must verify their accuracy themselves.

