



Church Road

Paddock Wood TN12 6HE

£1,100 PCM



COUNTRY HOMES

Paddock Wood TN12 6HE

Available to rent immediately (subject to passing the necessary references) is this delightful one bedroom self-contained property, situated in a convenient and accessible location, close to local shops, schools and transport links.

As you can see from the floor plan, the property comprises a good size bedroom, shower room and a generous size, open plan living/kitchen space.

One parking space is available with this property and there is access to a garden area, as shown in the photos. Water, broadband and council tax are included in the rental price.

Paddock Wood offers a wide variety of shopping facilities including a large Waitrose, Tesco & Jempson store with Post Office. Further stores include a bakers, opticians, dry cleaners plus a variety of coffee shops and a Department store. For those that require transport links into the Capital, there is a mainline station to London Charing Cross, Waterloo East & London Bridge. Paddock Wood also offers both Primary and Secondary schools. The larger towns of Tonbridge and Tunbridge Wells offer further shopping and leisure facilities.

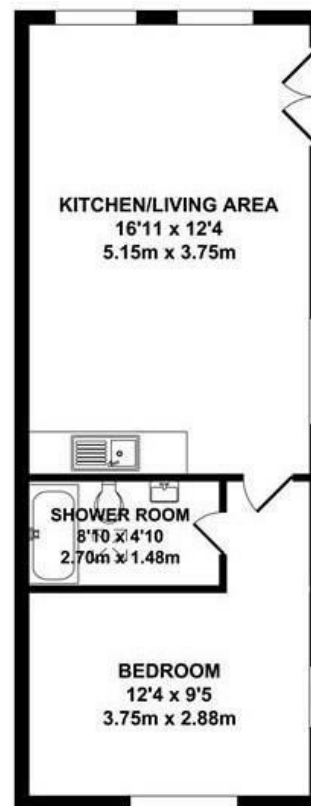
Holding deposit - £253

Deposit - £1265

Call now to arrange your viewing.

- One bed self-contained annex
- Open plan living room/kitchen
- Shower room
- Parking for one car
- Access to a garden
- Water, broadband & Council tax included
- Available immediately (subject to referencing)
- Local amenities close by
- Holding deposit - £253
- Deposit - £1265



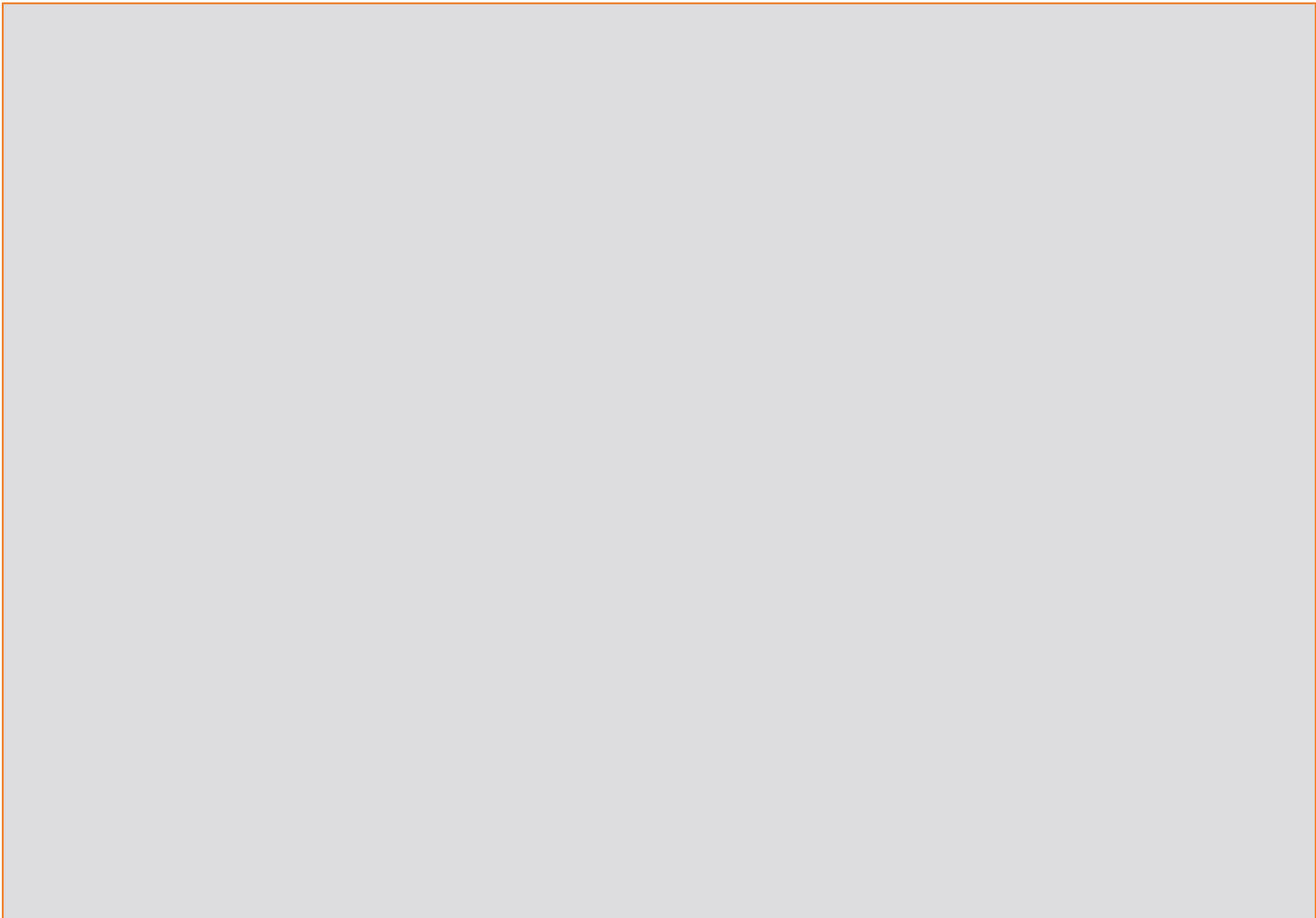


ANNEX FLOOR
APPROX. FLOOR AREA
468 SQ.FT.
(43.50 SQ.M.)

Energy Efficiency Rating		
	Current	Potential
Very energy efficient - lower running costs		
92 plus A		
81-91 B		
69-80 C		
55-68 D		
49-54 E		
41-48 F		
31-39 G		
Not energy efficient - higher running costs		
1-29		
England & Wales		
EU Directive 2002/91/EC		

8 Liberty Square, Kings Hill, Kent, ME19 4AU
01732 522 822
countryhomes@khp.me

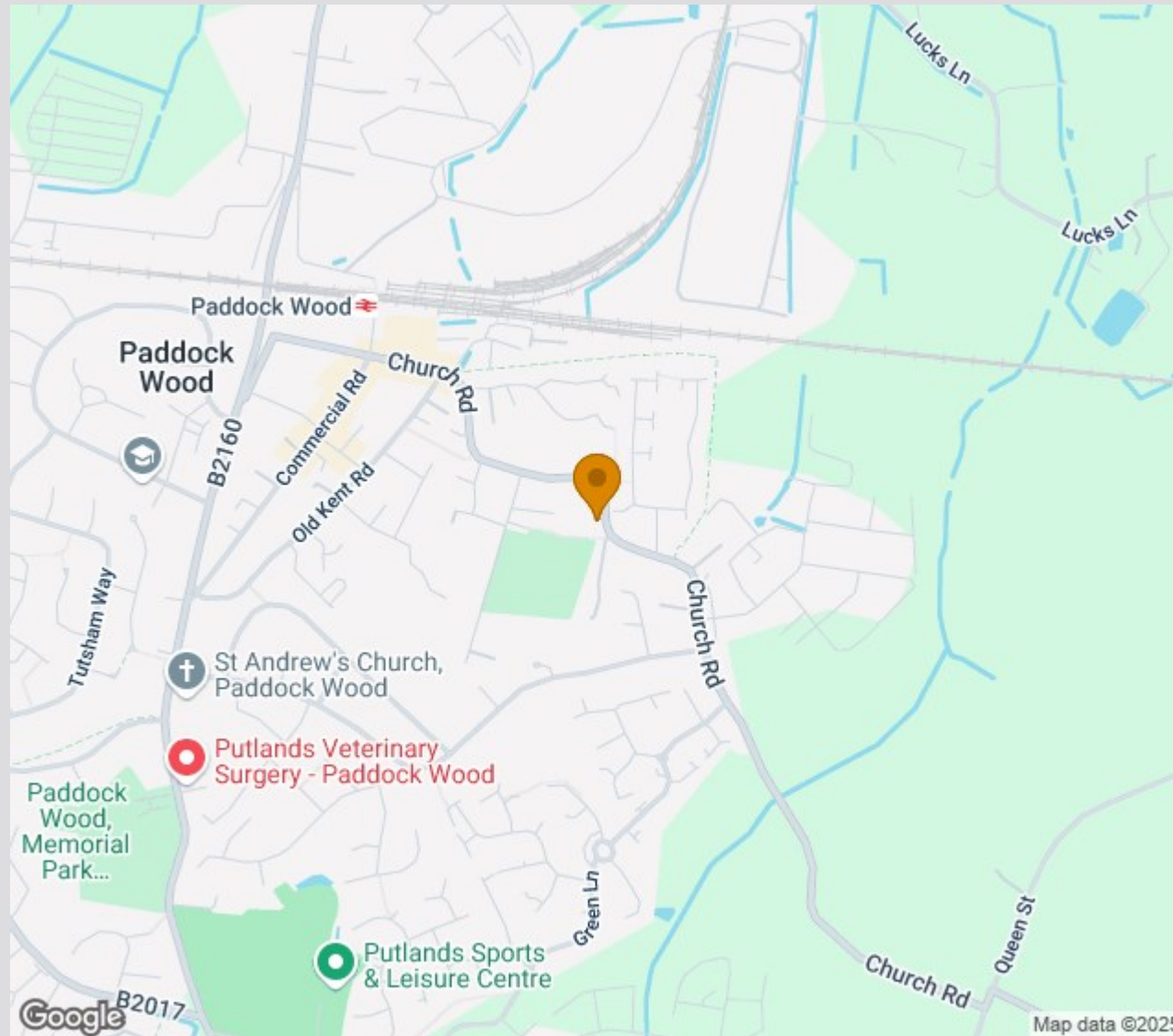




Location Map

Tenure:

Council tax band:
Exempt



Zoopla.co.uk
Smarter property search



TO VIEW CONTACT:

01732 522 822

countryhomes@khp.me

www.khp.me

rightmove