



## Vicarage Road

Maidstone ME18 6DX

Offers In Excess Of £600,000



COUNTRY HOMES

## Maidstone ME18 6DX

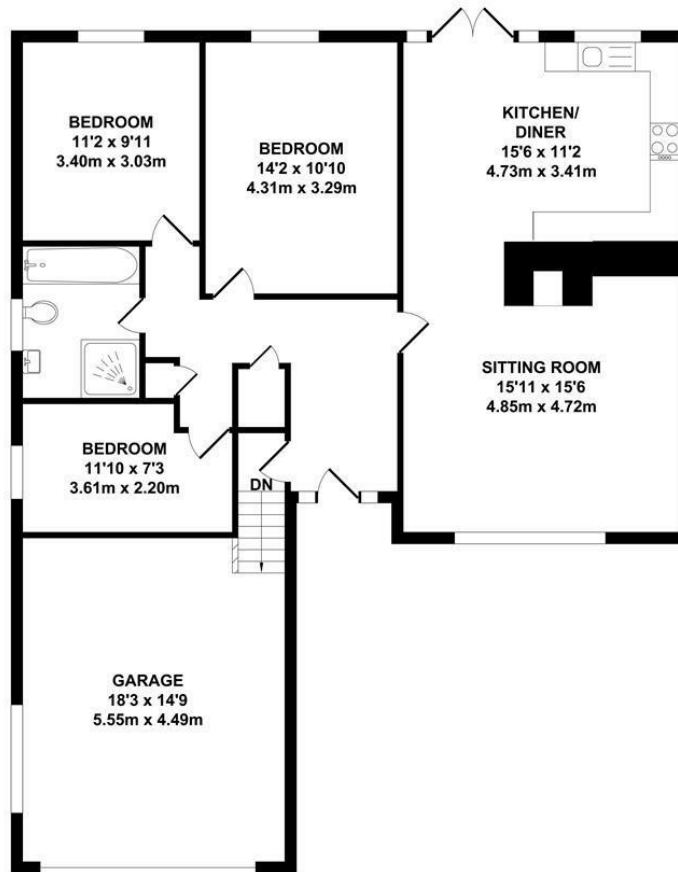
Nestled in the charming village of Yalding, this delightful bungalow on Vicarage Road offers a perfect blend of comfort and convenience. Having been completely refurbished with three well-proportioned bedrooms, this home is ideal for families or those seeking a peaceful retreat. The spacious reception room provides a welcoming atmosphere, perfect for entertaining guests or enjoying quiet evenings in.

The property features a well-appointed bathroom, ensuring all your daily needs are met with ease. One of the standout features of this bungalow is the ample parking and double garage, which is a rare find in such a desirable location.

Surrounded by the picturesque countryside, Yalding boasts a friendly community and a range of local amenities, including shops, schools, and parks, making it an excellent choice for those looking to settle in a tranquil yet accessible area. This bungalow presents a wonderful opportunity to create a warm and inviting home in a sought-after village setting. Don't miss the chance to make this charming property your own.

- Beautifully Presented Throughout
- No Onward Chain
- Detached Bungalow
- Good Size Sitting/Dining Room
- Newly Fitted Kitchen
- Three bedrooms
- Bathroom
- Driveway & Double Garage
- Front & Rear Gardens
- NO ONWARD CHAIN

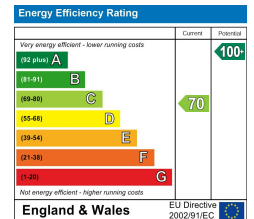




**TOTAL APPROX. FLOOR AREA 1275 SQ.FT. (118.45 SQ.M.)**

Whilst every attempt has been made to ensure the accuracy of the floor plan contained here, measurements of doors, windows, rooms and any other items are approximate and no responsibility is taken for any error, omission or mis-statement. This plan is for illustrative purposes only and should be used as such by any prospective purchaser. The services, systems and appliances shown have not been tested and no guarantee as to their operability or efficiency can be given.

Zome Media ©2026



6 Commercial Road, Paddock Wood, Kent, TN12 6EL  
 01892 838 080  
 countryhomes@khp.me

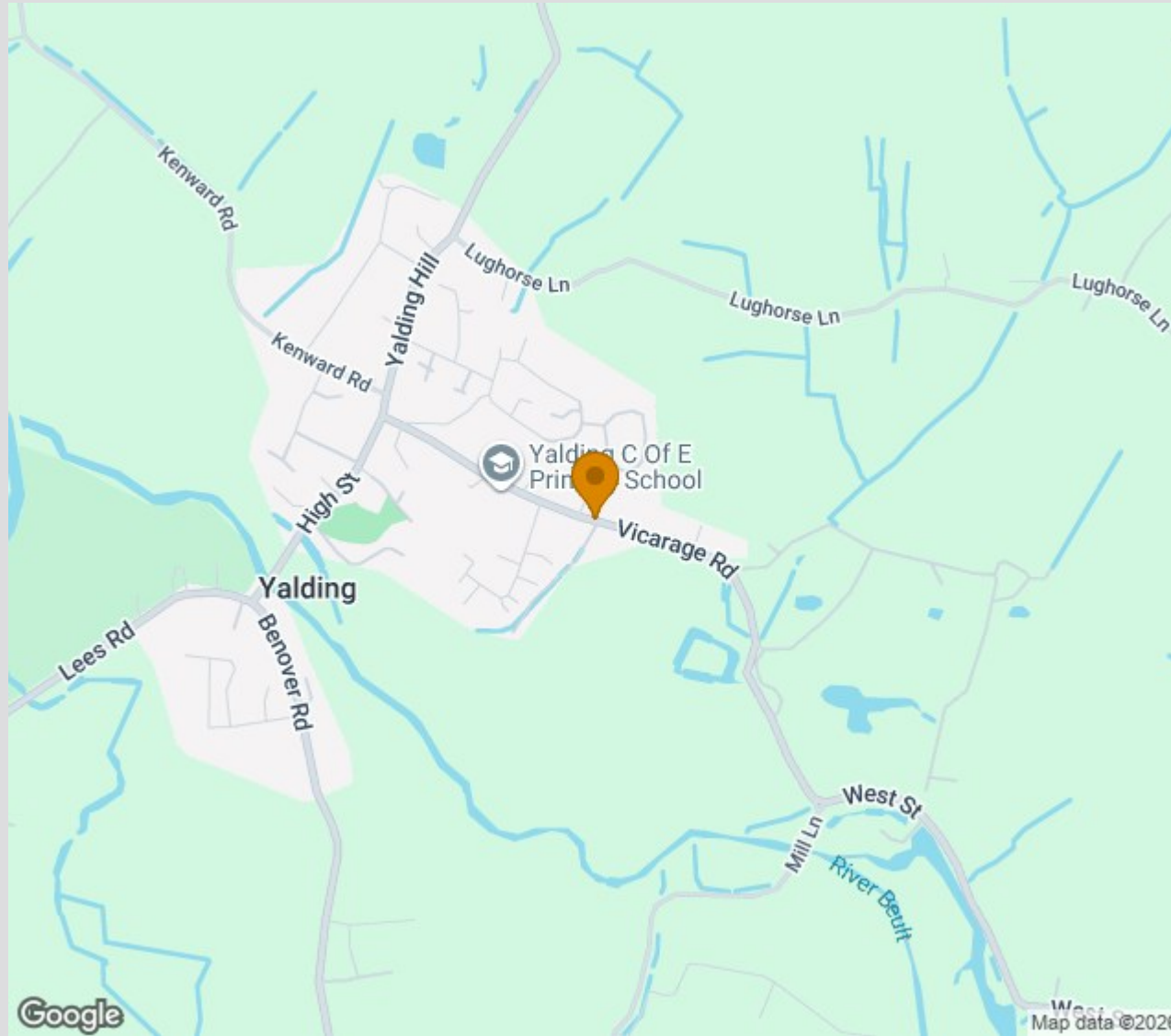




## Location Map

Tenure: Freehold

Council tax band: E



TO VIEW CONTACT:

01892 838 080

countryhomes@khp.me

www.khp.me

