



## College Avenue

Maidstone ME15 6YJ

Price £475,000



COUNTRY HOMES



## Maidstone ME15 6YJ

Welcome to this charming bungalow located in the centre of Maidstone.

The 3 generously sized bedrooms, the well equipped wet room, with the beautifully decorated living room and large kitchen make this bungalow ready to move in to.

With the open plan space its the perfect house for entertaining!

Externally, the property benefits from a large garden with a patio area perfect for entertaining in the summer. The garage and drive provide plenty of space for a multitude of vehicles - so parking would never be an issue.

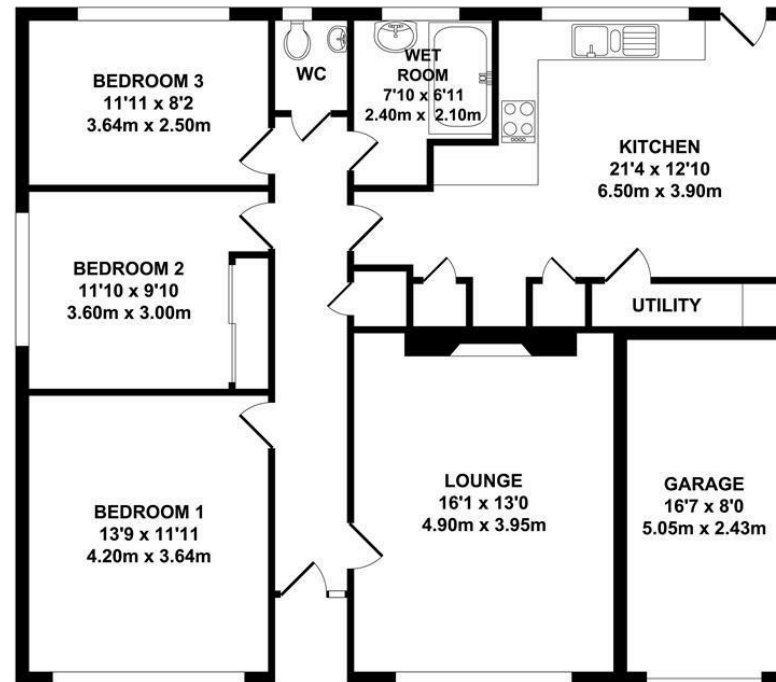
This property ticks so many boxes and has so much potential to extend!

Situated in the heart of Maidstone, within walking distance to Lockmeadow leisure complex which provides a multitude of restaurants, a cinema, bowling ally and a trampoline park. It's also within walking distance to multiple train stations, which have direct routes into central London.

Don't miss out - call today!

- Walking distance to town
- Close to train stations
- Detached home

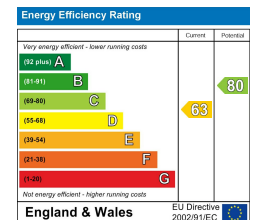




**TOTAL APPROX. FLOOR AREA 1202 SQ.FT. (111.66 SQ.M.)**

Whilst every attempt has been made to ensure the accuracy of the floor plan contained here, measurements of doors, windows, rooms and any other items are approximate and no responsibility is taken for any error, omission or mis-statement. This plan is for illustrative purposes only and should be used as such by any prospective purchaser. The services, systems and appliances shown have not been tested and no guarantee as to their operability or efficiency can be given.

Zome Media ©2025



Unit 2 Mid Kent Shopping Centre, Allington, Kent ME16 0PR

01622 94 22 22

allington@khp.me







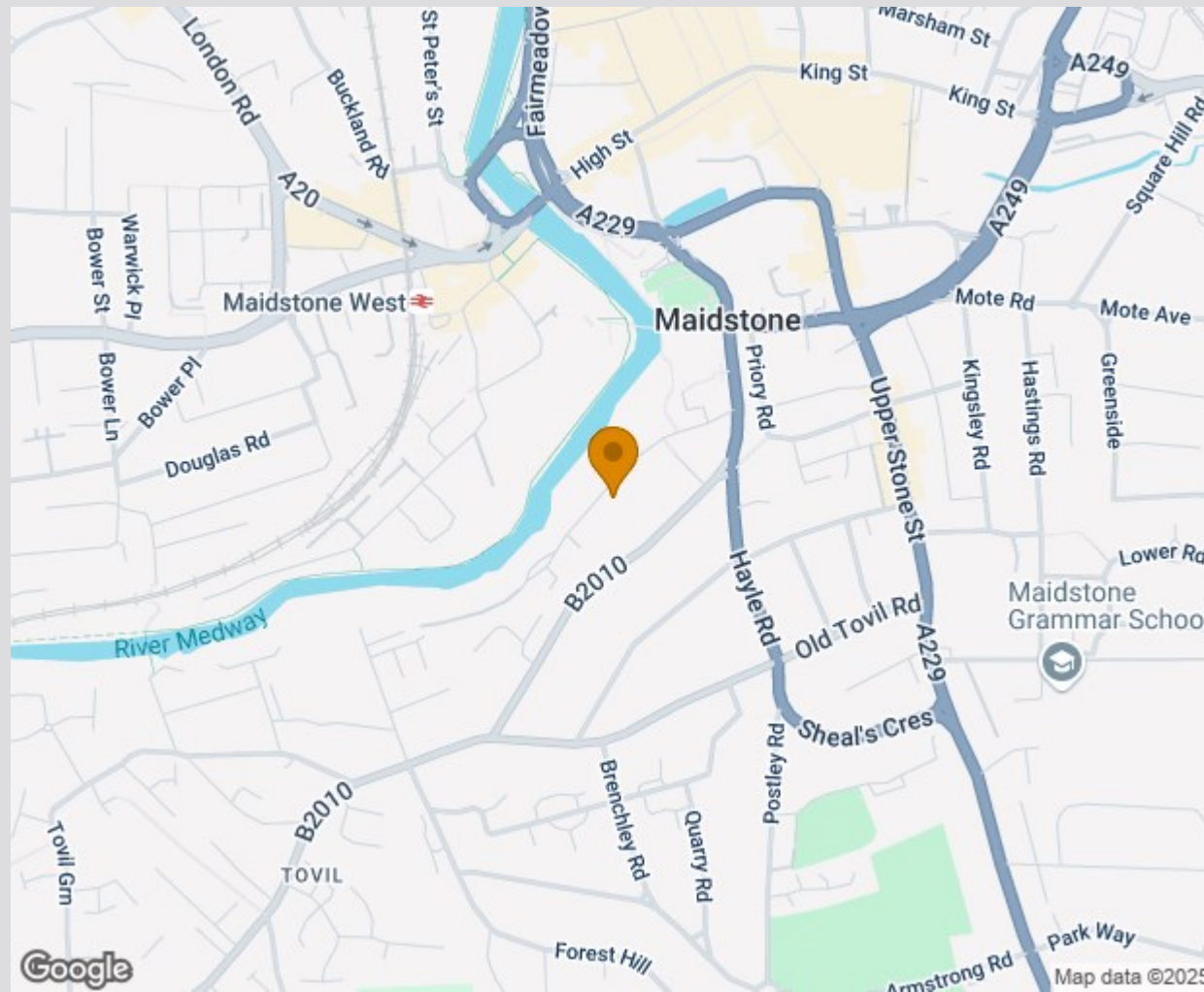




## Location Map

Tenure: Freehold

Council tax band: E



TO VIEW CONTACT: 01622 94 22 22 [allington@khp.me](mailto:allington@khp.me)

[www.khp.me](http://www.khp.me)



**Zoopla.co.uk**  
Smarter property search

