



Princes Way

Detling ME14 3LB

£475,000



COUNTRY HOMES



## Detling ME14 3LB

We are excited to introduce this family 4 bedroom detached home.

It has a garage with driveway. This family home also has a modern open plan kitchen/diner and separate living room, which provides an abundance of space to entertain. It has a downstairs study/playroom that ticks the box for everyone.

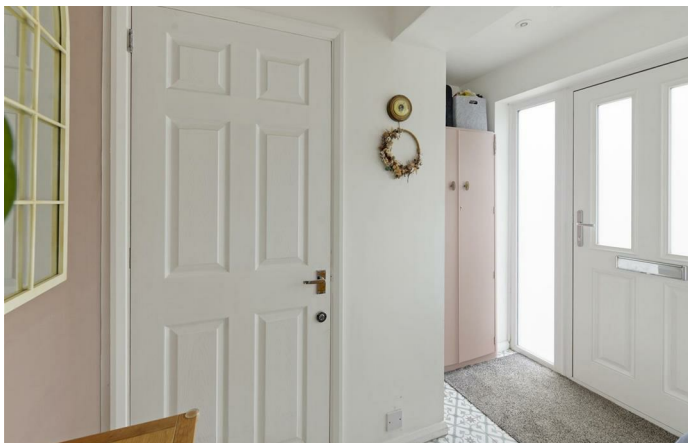
With a downstairs WC and modern family bathroom, this immaculate home is ready to move straight into.

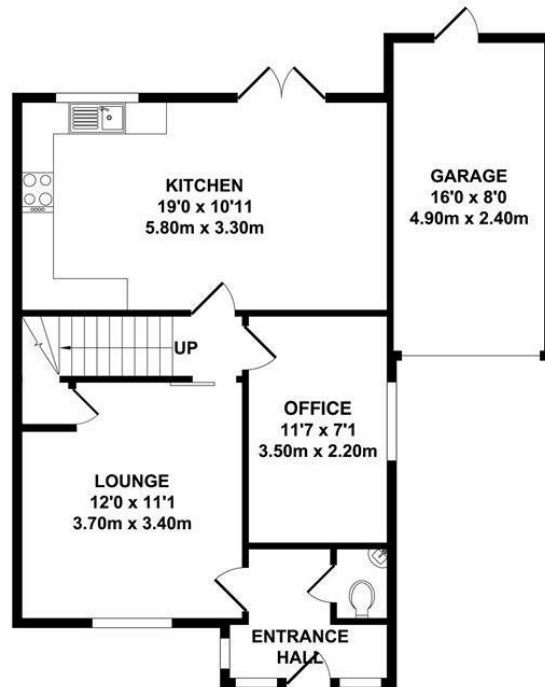
Upstairs you have 4 good sized bedrooms, alongside a generous family bathroom.

This stunning property has a generous south facing garden with a large patio, perfect for summer evenings.

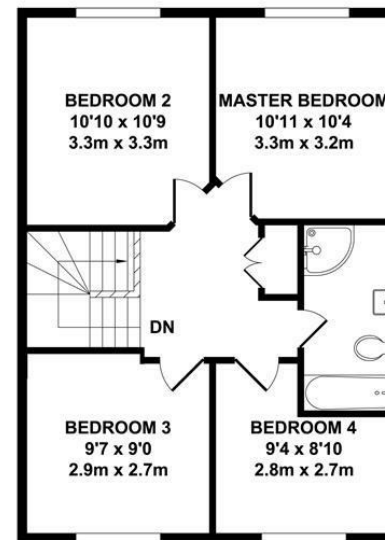
This spaciouly sized property is situated in a sought-after area of Detling. Its close to the M2 and M20, which gives a direct route into London or down to the coast.

Don't miss out on this property, call now to arrange a viewing now!





GROUND FLOOR  
APPROX. FLOOR AREA  
661 SQ.FT.  
(61.40 SQ.M.)

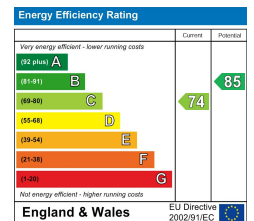


FIRST FLOOR  
APPROX. FLOOR AREA  
551 SQ.FT.  
(51.20 SQ.M.)

**TOTAL APPROX. FLOOR AREA 1212 SQ.FT. (112.60 SQ.M.)**

Whilst every attempt has been made to ensure the accuracy of the floor plan contained here, measurements of doors, windows, rooms and any other items are approximate and no responsibility is taken for any error, omission or mis-statement. This plan is for illustrative purposes only and should be used as such by any prospective purchaser. The services, systems and appliances shown have not been tested and no guarantee as to their operability or efficiency can be given.

Zome Media ©2025







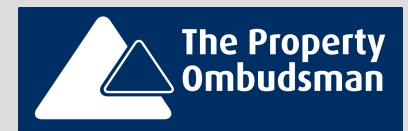
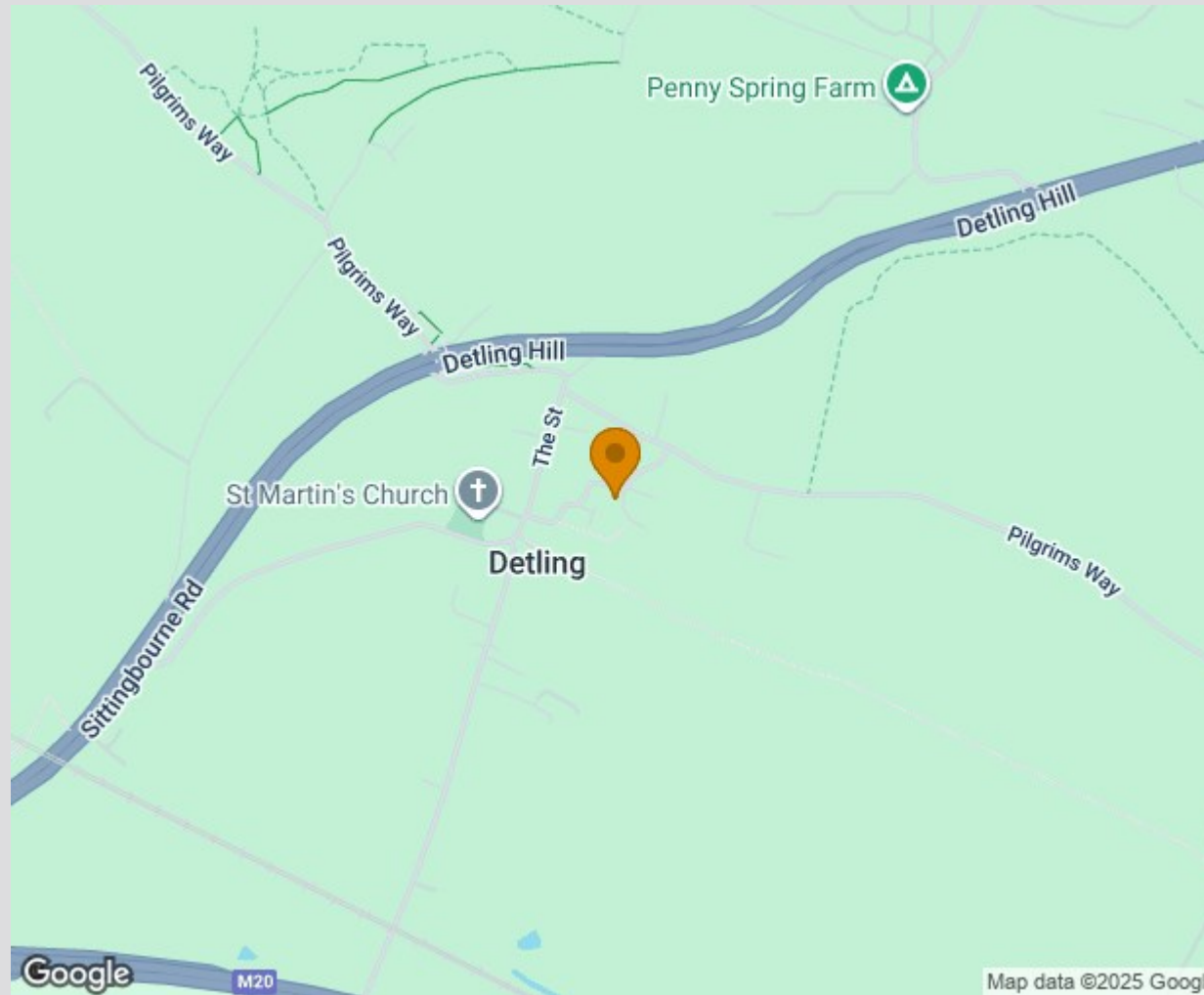




## Location Map

Tenure: Freehold

Council tax band: E



TO VIEW CONTACT: 01622 94 22 22 [allington@khp.me](mailto:allington@khp.me)

[www.khp.me](http://www.khp.me)



**Zoopla.co.uk**  
Smarter property search

