



## Barfield Gardens

West Malling ME19 5PD

£1,250,000



COUNTRY HOMES



## West Malling ME19 5PD

Nestled in the desirable location of Barfield Gardens, Offham, West Malling, this stunning new build property, completed in 2025, offers a perfect blend of modern living and comfort. This detached house boasts four generously sized double bedrooms, providing ample space for families or those who enjoy hosting guests.

As you enter, you are greeted by two elegant reception rooms, ideal for both relaxation and entertaining. The bespoke kitchen is a true highlight, designed with traditional finishes and equipped with high-quality appliances, making it a delightful space for culinary enthusiasts.

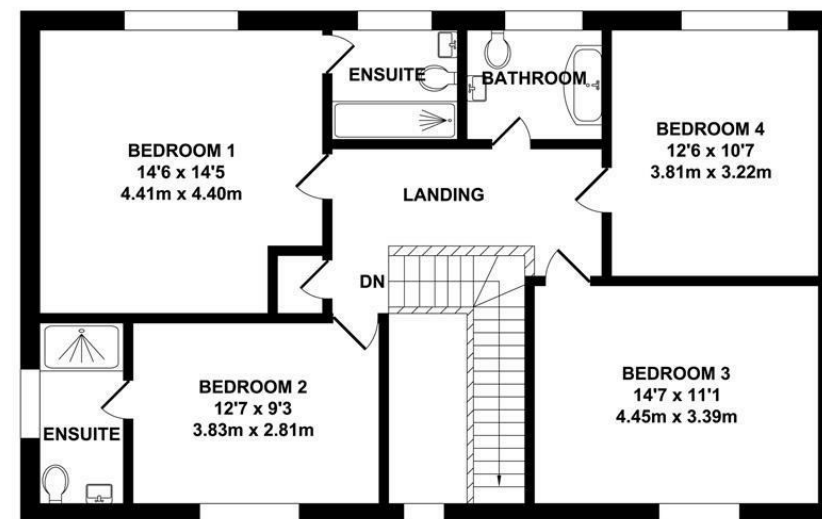
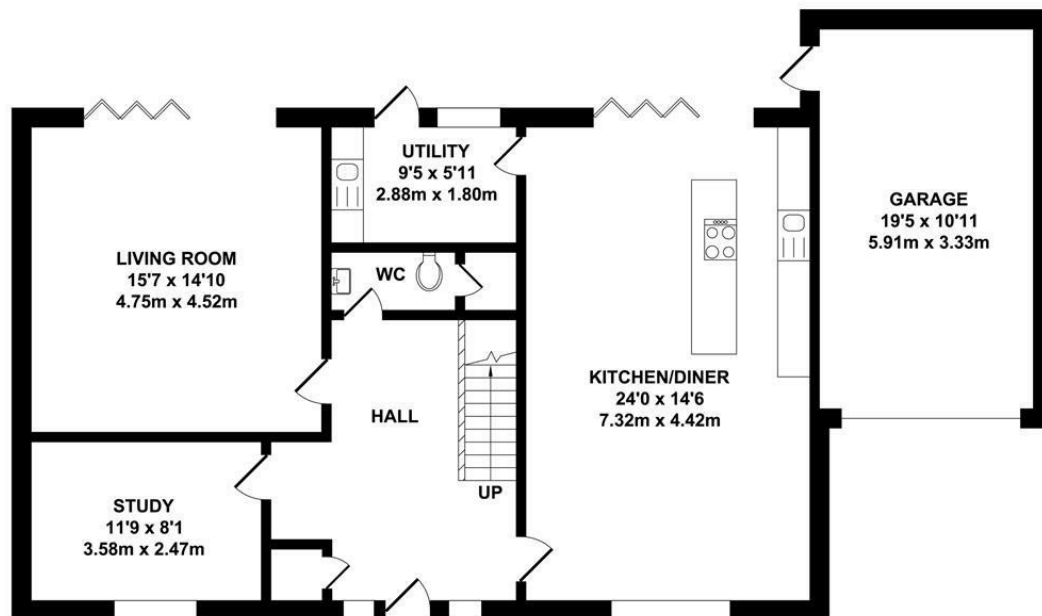
The property features three well-appointed bathrooms, ensuring convenience for all residents. Outside, the spacious rear garden presents a wonderful opportunity for outdoor activities, gardening, or simply enjoying the fresh air in a tranquil setting.

Situated in a sought-after area, this home is perfect for those looking to enjoy a peaceful lifestyle while still being within easy reach of local amenities and transport links. With a garage included, this property offers practicality alongside its many appealing features.

This exceptional home is not to be missed, offering a unique opportunity to reside in a beautiful new build in a charming community. Call our West Malling office today to book your viewing appointment on 01732871111.

- Exclusive 4 Bedroom Home
- Brand New Traditional Design
- Bespoke designed Kitchen
- Spacious Throughout
- Semi-rural Location
- Rear garden not overlooked
- Immaculate Condition





**TOTAL APPROX. FLOOR AREA 2103 SQ.FT. (195.37 SQ.M.)**

Whilst every attempt has been made to ensure the accuracy of the floor plan contained here, measurements of doors, windows, rooms and any other items are approximate and no responsibility is taken for any error, omission or mis-statement. This plan is for illustrative purposes only and should be used as such by any prospective purchaser. The services, systems and appliances shown have not been tested and no guarantee as to their operability or efficiency can be given.

Zome Media ©2025

Energy Efficiency Rating	
Very energy efficient - lower running costs	Current Potential
A	
B	
C	
D	
E	
F	
G	
Not energy efficient - higher running costs	
England & Wales	
EU Directive 2002/91/EC	

75-77 High Street, West Malling, Kent ME19 6NA  
 01732 87 11 11  
 westmalling@khp.me







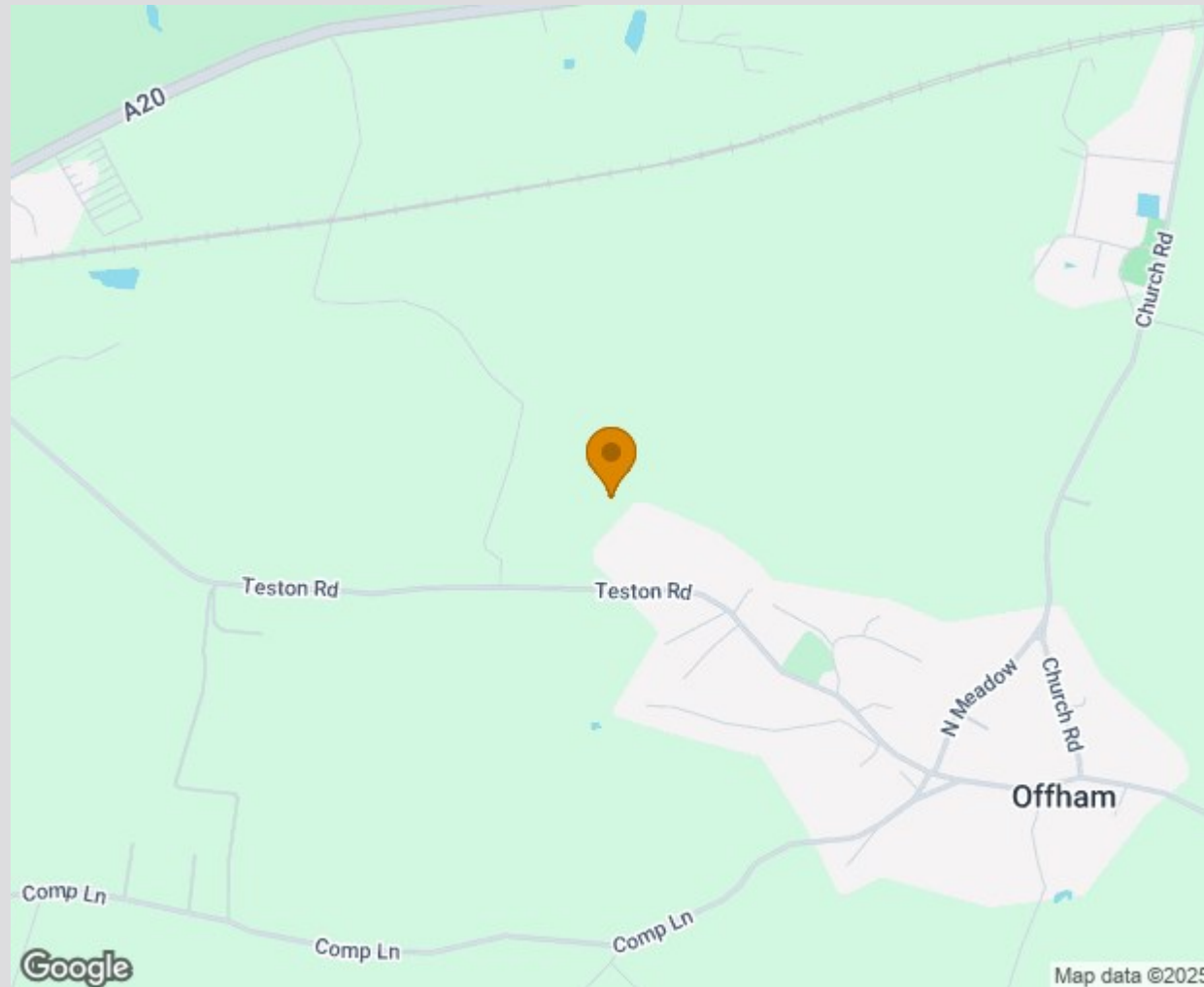


## Location Map

Tenure: Freehold

Council tax band:

Management Fee:  
Barfield Gardens Management  
Company Ltd - TBC approx £665  
p/a  
Reviewed every 12 months



TO VIEW CONTACT: 01732 87 11 11 [westmallings@khp.me](mailto:westmallings@khp.me)

[www.khp.me](http://www.khp.me)



**Zoopla.co.uk**  
Smarter property search

