



Orchard Grove
Aylesford ME20 6BY
£300,000



COUNTRY HOMES

Aylesford ME20 6BY

****IDEAL FIRST TIME BUY****

*** Chain free ***

Situated in the popular Ditton, Aylesford area is this well presented home. Close to local amenities such as supermarkets, local shops, Primary and Secondary Schools, Aylesford retail park and Larkfield Leisure Centre. This property benefits from easy access to M20 and local mainline train station at Aylesford.

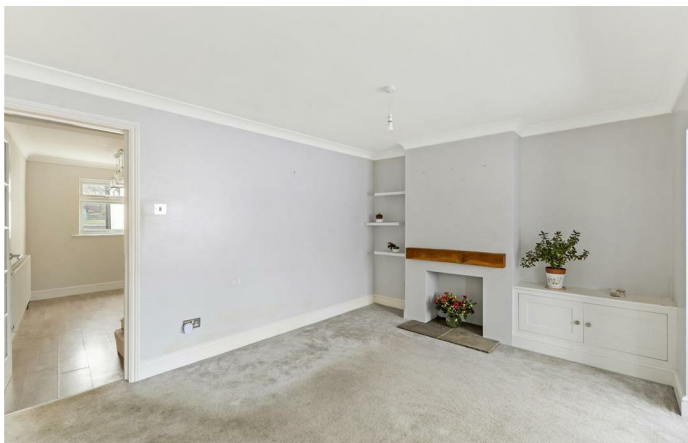
Internally the property is MODERNLY DECORATED THROUGHOUT and comprises porchway, spacious living room, OPEN PLAN kitchen/diner, utility room, cloakroom WC, master bedroom with fitted wardrobes, family bathroom and second DOUBLE BEDROOM with fitted wardrobe.

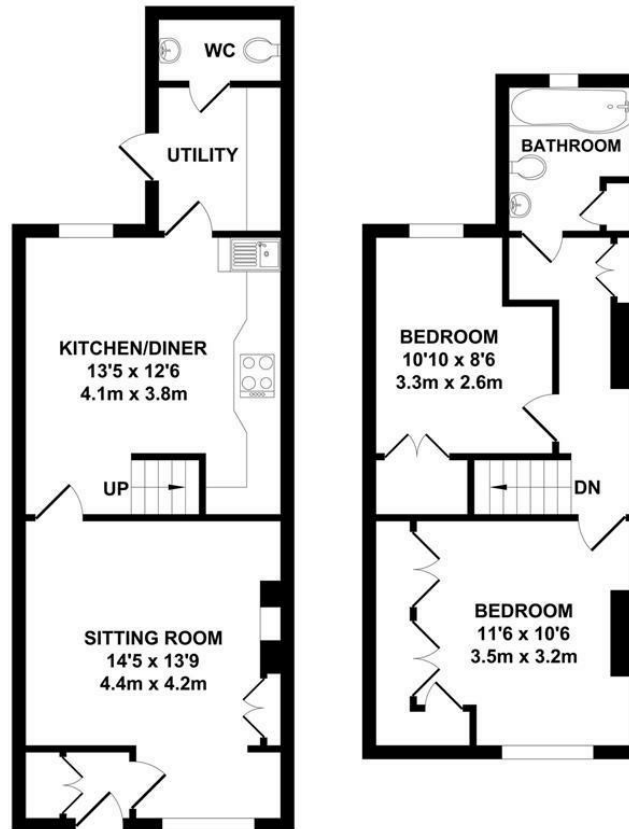
Externally the property boasts a rear 100ft garden which is laid with grass, beautiful landscaped patio area and decking area.

On Street Parking

CALL NOW TO ARRANGE YOUR VIEWING!!

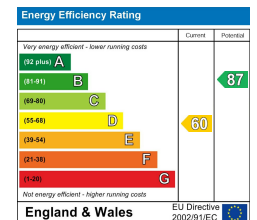
- 2 Double Bedrooms
- Kitchen/Diner
- Lounge
- Utility Room
- Cloakroom WC
- Family Bathroom
- 100ft Rear Garden
- Close To M20
- Close To Local Amenities
- CHAIN FREE





Whilst every attempt has been made to ensure the accuracy of the floor plan contained here, measurements of doors, windows, rooms and any other items are approximate and no responsibility is taken for any error, omission or misstatement. This plan is for illustrative purposes only and should be used as such by any prospective purchaser. The services, systems and appliances shown have not been tested and no guarantee as to their operability or efficiency can be given.

Zome Media ©2020





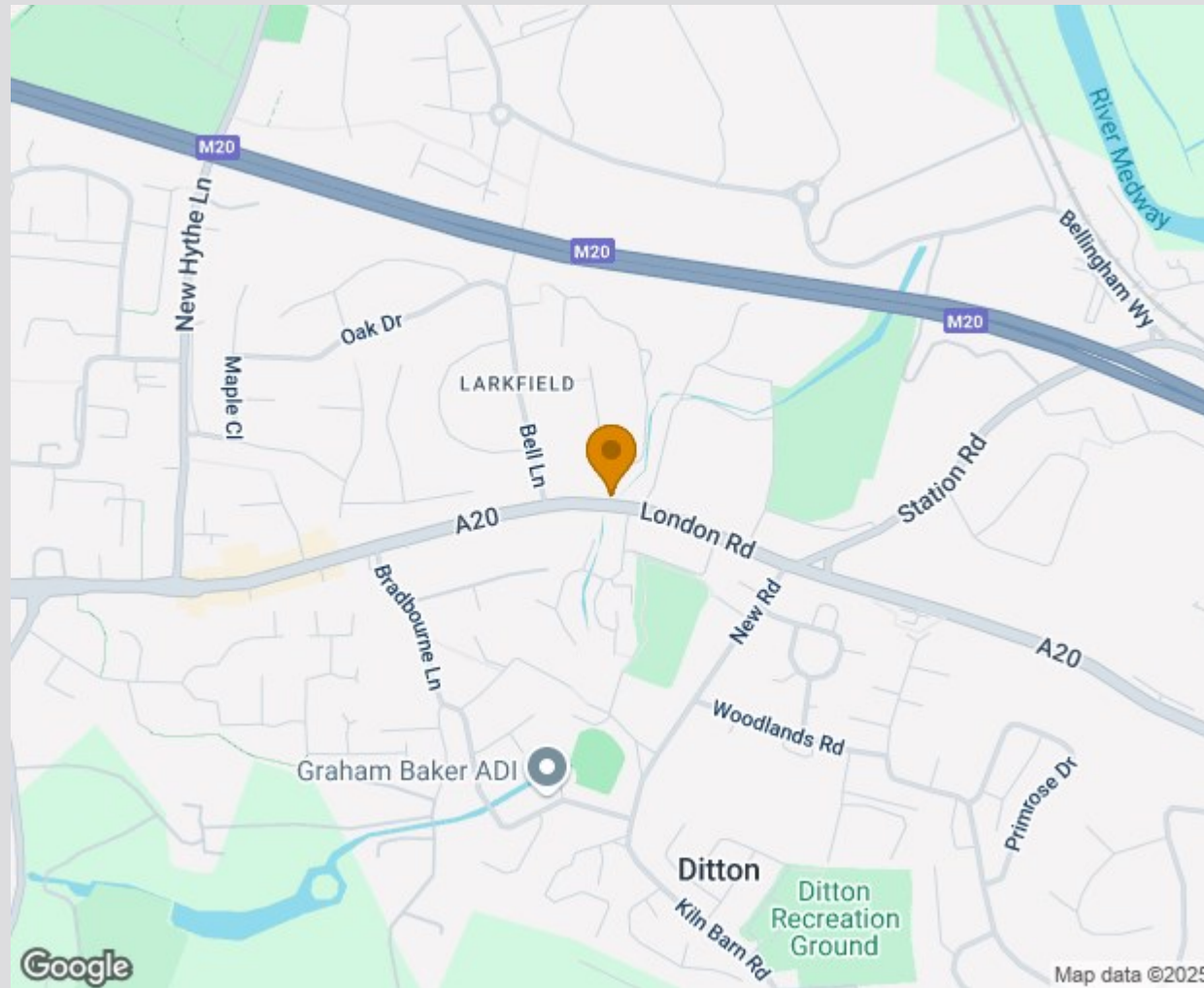


Location Map

Tenure: Freehold

Council tax band: C

ADDITIONAL INFORMATION
UPVC Double Glazing



TO VIEW CONTACT: 01732 87 11 11 westmallings@khp.me
www.khp.me



Zoopla.co.uk
Smarter property search

