



## Beech Road

Mereworth ME18 5QT

£2,150,000



COUNTRY HOMES



## Mereworth ME18 5QT

Nestled on the picturesque rural Beech Road in Mereworth, this stunning detached house offers an exceptional opportunity for those seeking a spacious family home with ample outdoor space. Set within just under 10 acres of beautifully maintained grounds, this property is a true haven for nature lovers and those who appreciate the tranquillity of rural living as well as a stunning view to the rear.

The main house boasts five generously sized bedrooms, providing plenty of room for family and guests. With four elegant reception areas, three are open plan to the rear leading to the garden, there is an abundance of space for entertaining or simply enjoying quiet evenings at home. The two well-appointed bathrooms ensure convenience for all residents. The fourth reception is on the 1st floor giving you stunning far reaching views across the Kent countryside.

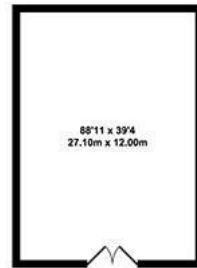
In addition to the main living quarters, the property features a versatile annexe, perfect for accommodating visitors or as a private office space. The garaging offers practical storage solutions, while the extensive grounds include kennels and stables, making it an ideal setting for animal lovers or those with equestrian interests.

A notable highlight of this property is the 3500 sq ft barn, which comes with planning permission, presenting an exciting opportunity for further development or personalisation to suit your needs. With parking available for multiple vehicles, this home combines convenience with the charm of countryside living.

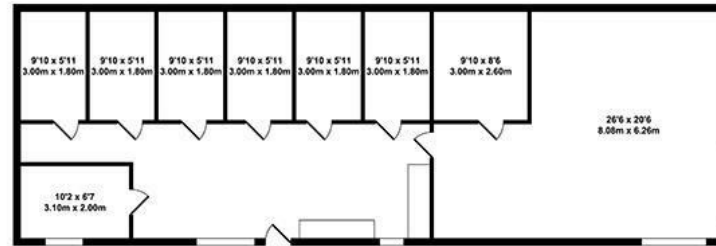
This remarkable property on Beech Road is not just a house; it is a lifestyle choice, offering a unique blend of comfort, space, and potential. Whether you are looking to create your dream family home or seeking a retreat from the hustle and bustle of city life, this residence is sure to impress. Call to view.

- Detached 2813 sq ft 5 bed house
- Annexe
- Stables and kennels
- Detached 3500 sq ft barn with pp
- Approx 9.68 acres total
- Rural location
- Stunning views across Kent countryside
- Ample parking
- Flexible accommodation and huge potential
- Viewing encouraged

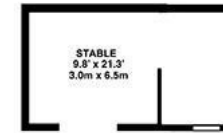




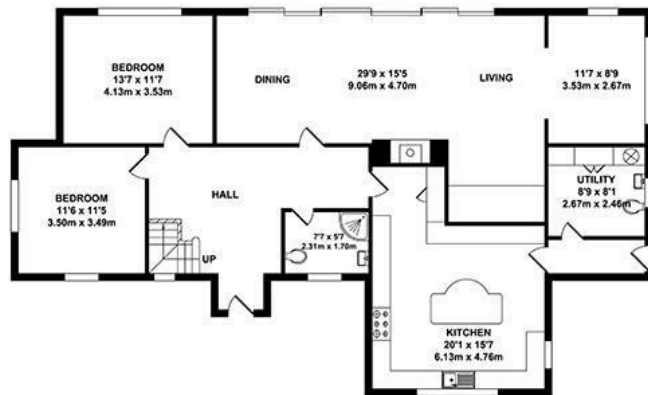
OUTBUILDING  
(NOT TO SCALE)  
APPROX. FLOOR AREA  
3500 SQ.FT.  
(325.20 SQ.M.)



KENNELS  
APPROX. FLOOR AREA  
1313 SQ.FT.  
(121.94 SQ.M.)



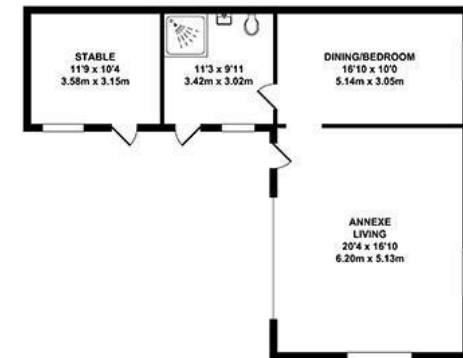
STABLE  
APPROX. FLOOR AREA  
208.74 SQ.FT.  
(19.5 SQ.M.)



GROUND FLOOR  
APPROX. FLOOR AREA  
1454 SQ.FT.  
(135.08 SQ.M.)



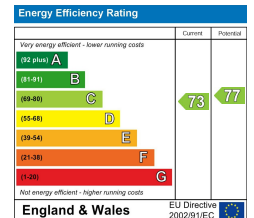
FIRST FLOOR  
APPROX. FLOOR AREA  
1359 SQ.FT.  
(126.25 SQ.M.)



OUTBUILDING  
APPROX. FLOOR AREA  
740 SQ.FT.  
(68.74 SQ.M.)

**TOTAL APPROX. FLOOR AREA 8552 SQ.FT. (794.54 SQ.M.)**

Whilst every attempt has been made to ensure the accuracy of the floor plan contained here, measurements of doors, windows, rooms and any other items are approximate and no responsibility is taken for any error, omission or mis-statement. This plan is for illustrative purposes only and should be used as such by any prospective purchaser. The services, systems and appliances shown have not been tested and no guarantee as to their operability or efficiency can be given.  
Zome Media ©2025







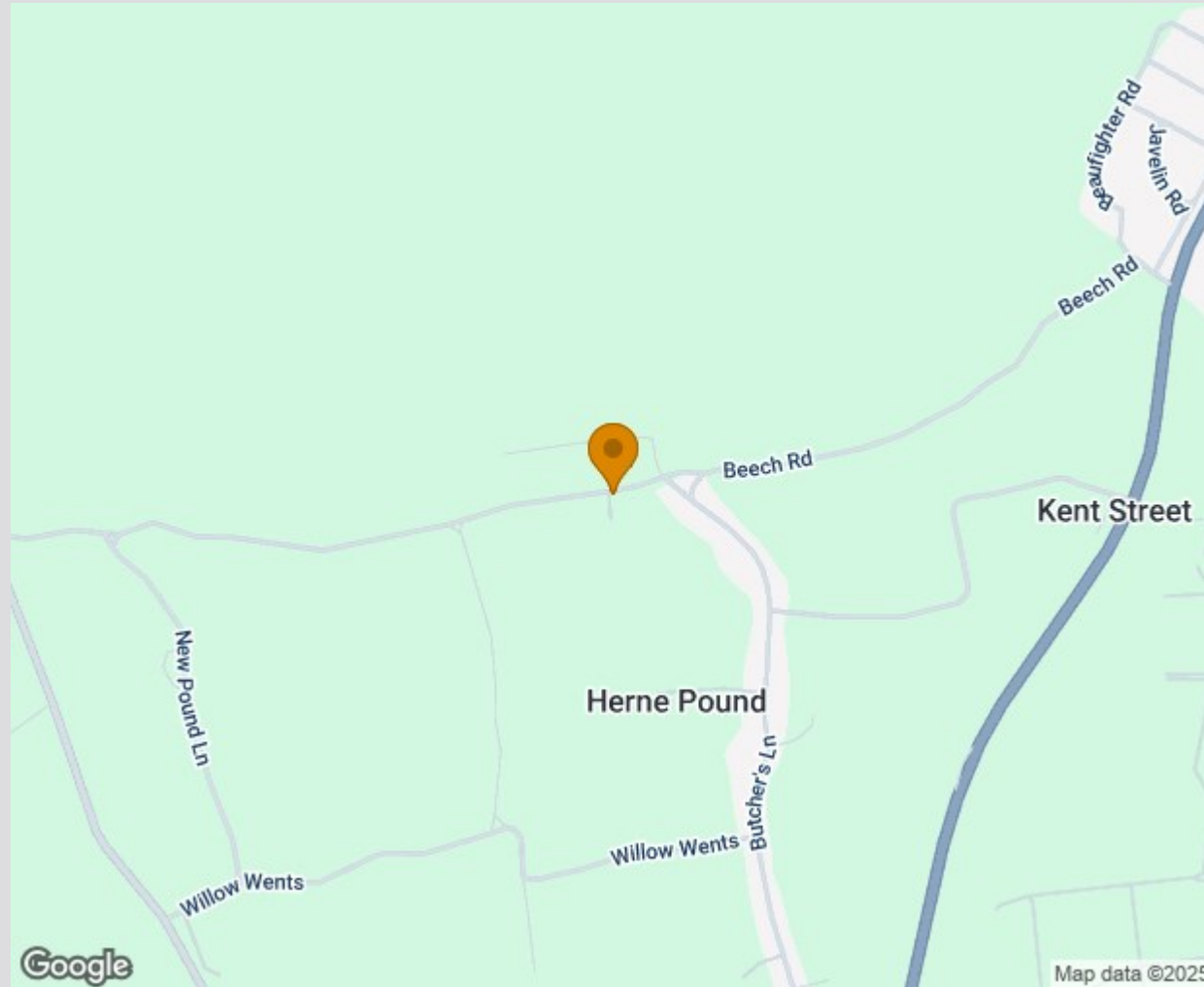




## Location Map

Tenure: Freehold

Council tax band: F



TO VIEW CONTACT: 01732 87 11 11 [westmallings@khp.me](mailto:westmallings@khp.me)

[www.khp.me](http://www.khp.me)



**Zoopla.co.uk**  
Smarter property search

