



www.jeffreygross.co.uk

CARDIFF

VALE

CAERPHILLY

BRISTOL



Landmark Place

CHURCHILL WAY



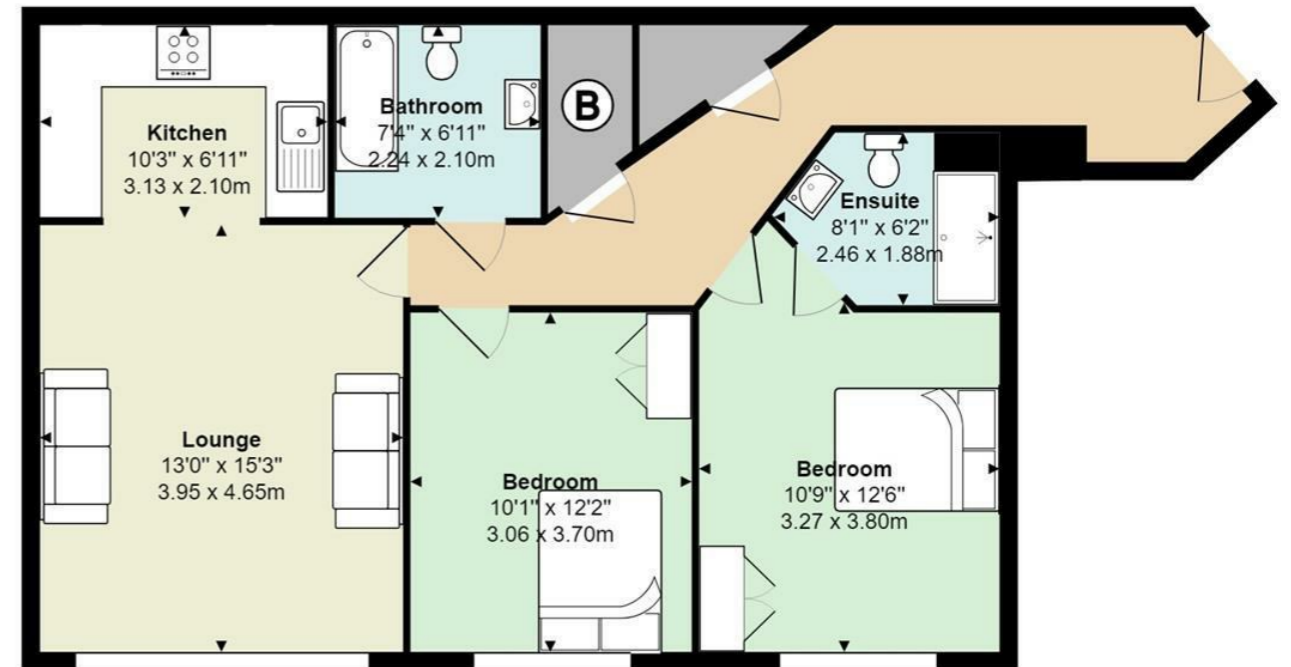
Comments by Ms Gemma Simmonite



Property Specialist
Ms Gemma Simmonite
Lettings Negotiator

gemma.simmonite@jeffreycross.co.uk

Landmark Place, City Centre



Total Area: 796 ft² ... 74.0 m²

All measurements are approximate and for display purposes only

In the heart of Cardiff is this very spacious two bedroom apartment.

Comments by the Homeowner





Landmark Place

Churchill Way, Cardiff, CF10 2HT

Per Month

£1,100 Per Month



2 Bedroom(s)



2 Bathroom(s)



796.00 sq ft



Contact our
Penylan Branch

02920 499680

Located in the popular Landmark Place building on Churchill Way is this spacious two double bedroom apartment. On the corner of block facing towards Churchill Way and Capital Shopping Centre this good size apartment would make a great base in the City. Inside you have two double bedrooms, ensuite bathroom, with an additional main bathroom, lounge diner and modern kitchen. Water rates and a car parking space also included. A great apartment in the heart of our proud Welsh Capital City!

EPC Rating - C
Council Tax Band - E

A holding fee of one weeks' rent will be payable to secure the property. This will be deducted from the final balance payable upon moving into the property, subject to a successful application. JeffreyRoss Limited reserves the right to retain this payment should the applicant have provided false or misleading information at the time of applying for the Tenancy or failed to take reasonable steps to enter into the tenancy agreement.





CARDIFF

VALE

CAERPHILLY


BRISTOL

www.jeffreygross.co.uk





Energy Efficiency Rating

| | Current | Potential |
|---|---|-----------|
| Very energy efficient - lower running costs | | |
| (92 plus) A | | |
| (81-91) B | | |
| (69-80) C | | |
| (55-68) D | 66 | 67 |
| (39-54) E | | |
| (21-38) F | | |
| (1-20) G | | |
| Not energy efficient - higher running costs | | |
| England & Wales | EU Directive 2002/91/EC  | |

