

[www.jeffreygross.co.uk](http://www.jeffreygross.co.uk)

CARDIFF

VALE

CAERPHILLY

BRISTOL

*Pacific Road*



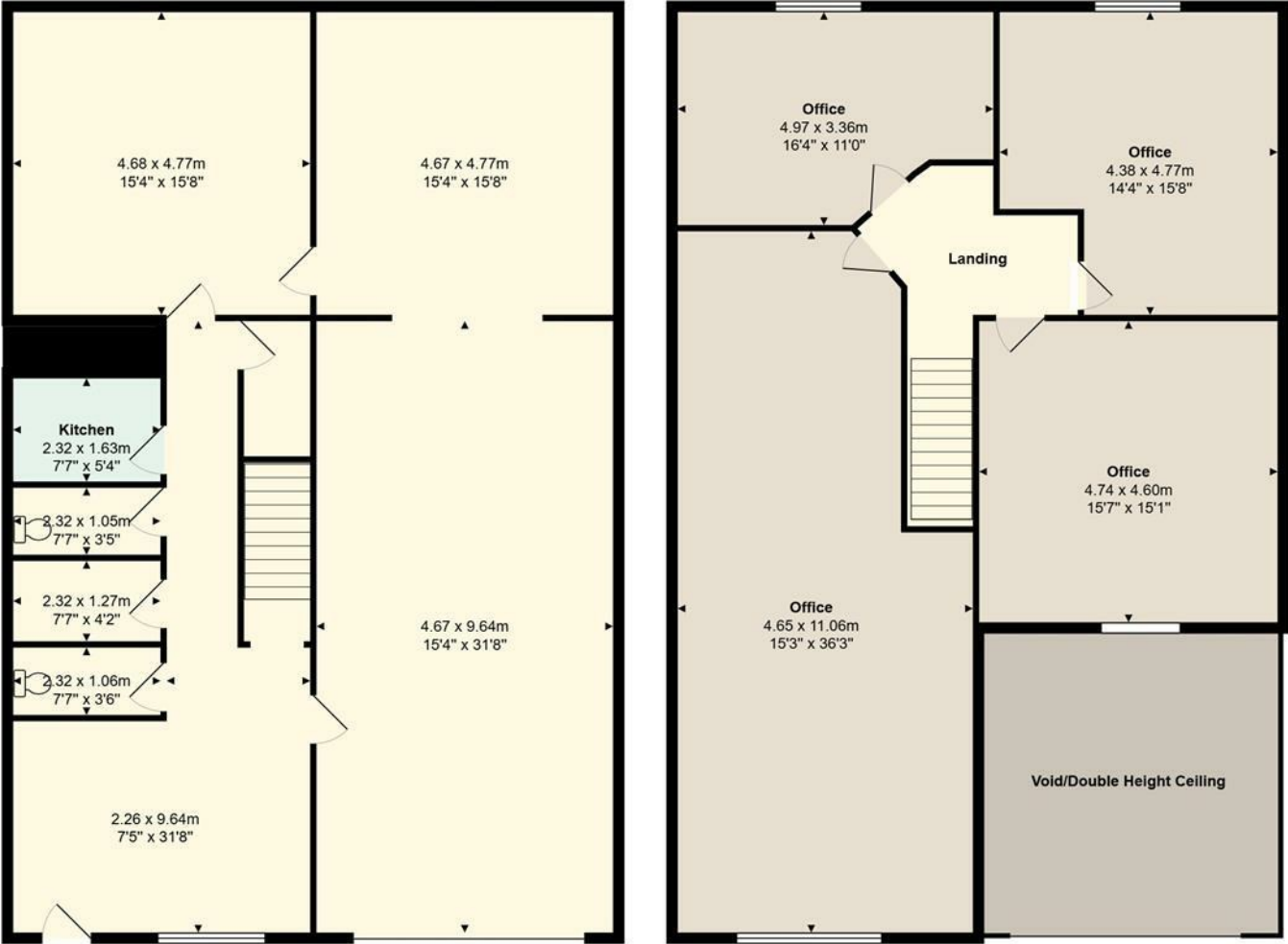
Comments by Mr Ross Hooper-Nash



**Property Specialist**  
**Mr Ross Hooper-Nash**  
Director

ross@jeffreygross.co.uk

Comments by the Homeowner



Ground Floor

First Floor

Unit 13 Pacific Business Park

Total Area: 248.5 m² ... 2675 ft²


All measurements are approximate and for display purposes only


# Pacific Road


, Cardiff, CF24 5HJ


Per Annum

£20,000 Per Annum

 null Bedroom(s)

 null Bathroom(s)

 2675.00 sq ft



Contact our

***Pontcanna Branch***

02920 499680

Modern mid-terrace industrial/warehouse unit of approximately 2,675 sq ft, with a clear workshop area and first floor offices benefitting from air conditioning. The property is situated on a gated development with parking to the front, within a secure estate. The previous tenants have recently vacated and reinstatement works are under way, so the unit will be presented in a clean, tidy condition for a new occupier. We are informed the building is not elected for VAT, and any estate service charge and insurance are excluded from the quoted terms.

EPC Ordered., previous rating C.





