

www.jeffreygross.co.uk

CARDIFF

VALE

CAERPHILLY

BRISTOL



Hensol Castle Park

HENSOL



A stylish, modern first-floor apartment in the Hensol Castle development, with a bright open-plan living/dining space and floor-to-ceiling windows looking out over the golf course. It has a newly updated kitchen with Neff appliances, two double bedrooms with ensuites, a third bedroom, plus an extra WC. Handy for the M4 and available with no onward chain.

Comments by Mrs Ruby Ledley



Property Specialist

Mrs Ruby Ledley

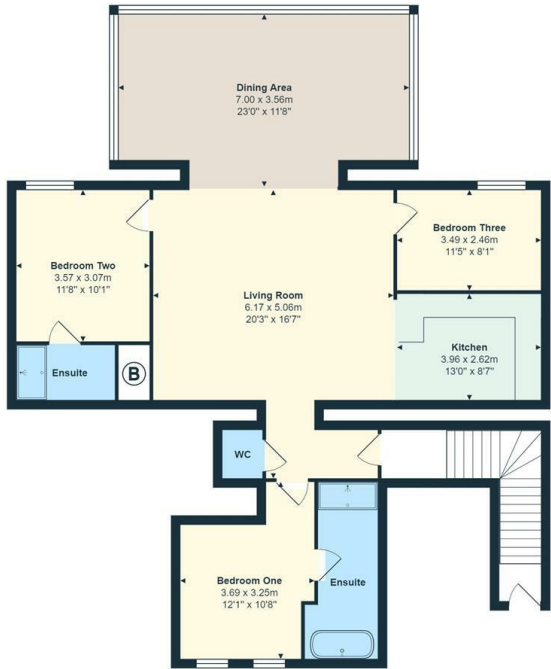
Valuer

ruby@jeffreycross.co.uk



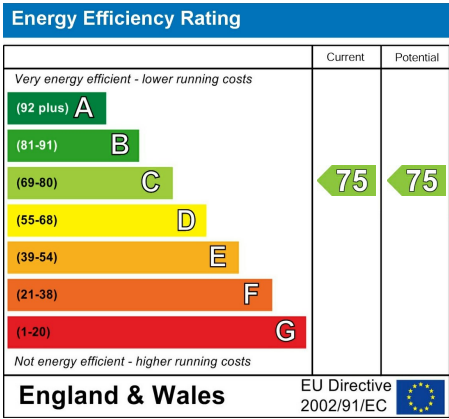
This modern and spacious apartment comprises of a large living dining room with floor to ceiling windows overlooking the golf course, a newly refurbished kitchen with Nef appliances, two double bedrooms each with its own ensuite, a third bedroom and an additional Cloakroom WC.

Comments by the Homeowner





- Hallway
- WC Cloakroom
- Bedroom 1 12'1 x 10'8 (3.68m x 3.25m)
- En-Suite
- Living Room 20'3 x 16'7 (6.17m x 5.05m)
- Bedroom 2 11'8 x 10'1 (3.56m x 3.07m)
- En-Suite
- Kitchen 13 x 8'7 (3.96m x 2.62m)
- Bedroom 3 11'5 x 8'1 (3.48m x 2.46m)
- Dining Area 23 x 11'8 (7.01m x 3.56m)





Hensol Castle Park


Hensol, Pontyclun, CF72 8GH


Offers Over

£375,000

 3 Bedroom(s)

 2 Bathroom(s)

 1517.00 sq ft



Contact our

Pontcanna Branch

02920 499680

An exceptionally stylish contemporary first floor apartment set within Hensol Castle Residential Development. This modern and spacious apartment comprises of a large living dining room with floor to ceiling windows overlooking the golf course, a newly refurbished kitchen with Nef appliances, two double bedrooms each with its own ensuite, a third bedroom and an additional Cloakroom WC. Conveniently situated for access to M4 motorway. This property is offered with no onward chain.



CARDIFF

VALE

CAERPHILLY

BRISTOL

www.jeffreygross.co.uk