



www.jeffreygross.co.uk

CARDIFF

VALE

CAERPHELLY

BRISTOL



Pacific Road

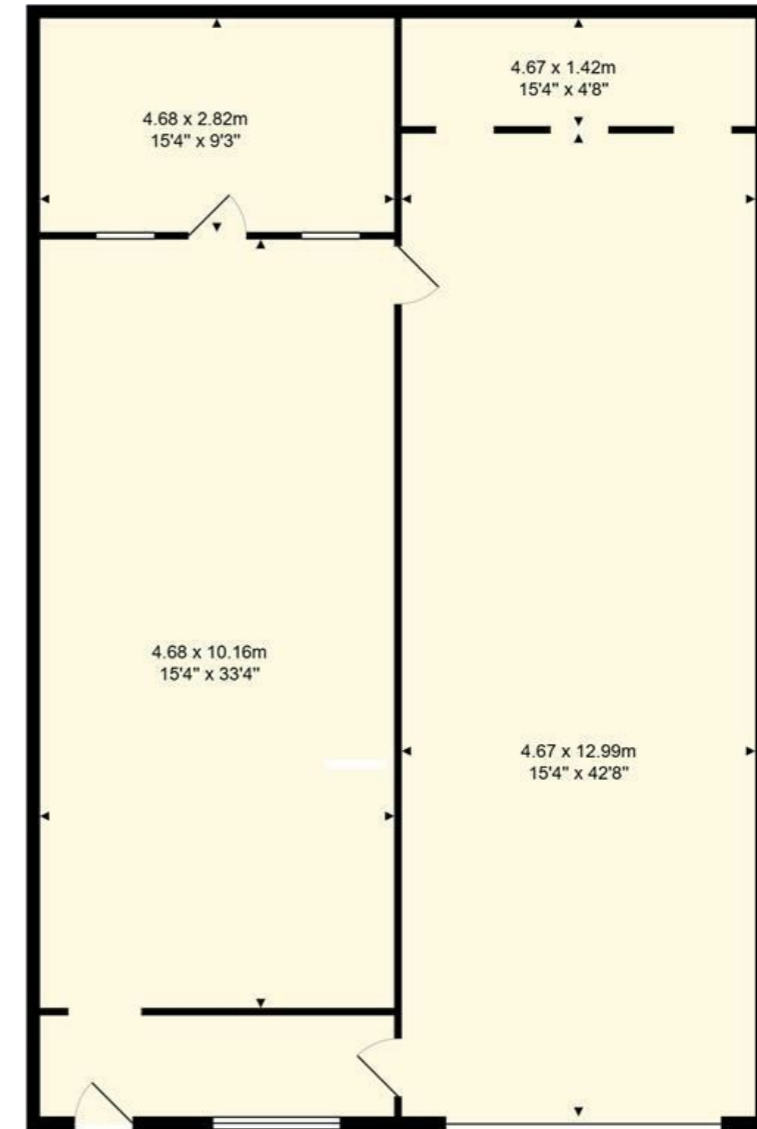


Comments by Mr Elliott Hooper-Nash



Property Specialist
Mr Elliott Hooper-Nash
Director

Elliott@jeffreyross.co.uk



Ground Floor

Unit 13 Pacific Business Park

Total Area: 137.2 m² ... 1477 ft²

All measurements are approximate and for display purposes only

Comments by the Homeowner








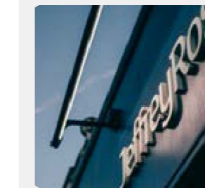
Pacific Road

, Cardiff, CF24 5HJ

Per Annum

£20,000 Per Annum

 null Bedroom(s)  null Bathroom(s)  1477.00 sq ft



Contact our
Pontcanna Branch

02920 499680

End-terrace industrial/warehouse unit of approximately 1477 sq ft, with ground floor workshop and ancillary areas. The property is situated in a gated development with parking to the front, within a secure estate. Currently partly suspended ceiling has potential for additional storage above. We are informed the building is not elected for VAT, and any estate service charge and insurance are excluded from the quoted terms.

Please note: the ground is unable to excavated to create an inspection pit for garage/MOT station.

EPC Ordered., previous rating C.



CARDIFF

VALE

CAERPHILLY

BRISTOL

www.jeffreygross.co.uk



Energy Efficiency Rating

	Current	Potential
Very energy efficient - lower running costs		
(92 plus) A		
(81-91) B		
(69-80) C		
(55-68) D		
(39-54) E		
(21-38) F		
(1-20) G		
Not energy efficient - higher running costs		

England & Wales

EU Directive 2002/91/EC

