



www.jeffreygross.co.uk

CARDIFF

VALE

CAERPHILLY

BRISTOL



Lower Cathedral Road



Comments by Jon Hooper-Nash



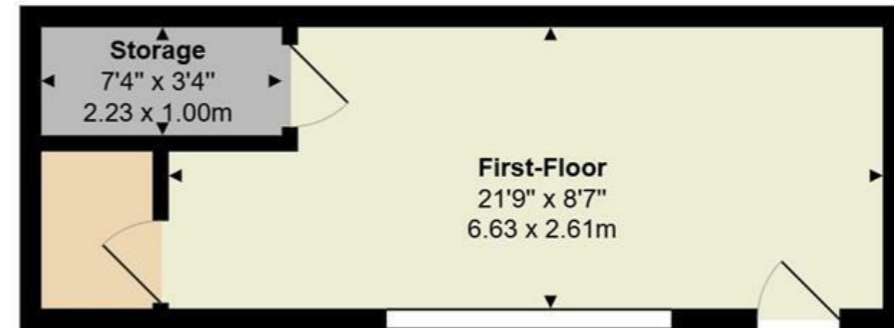
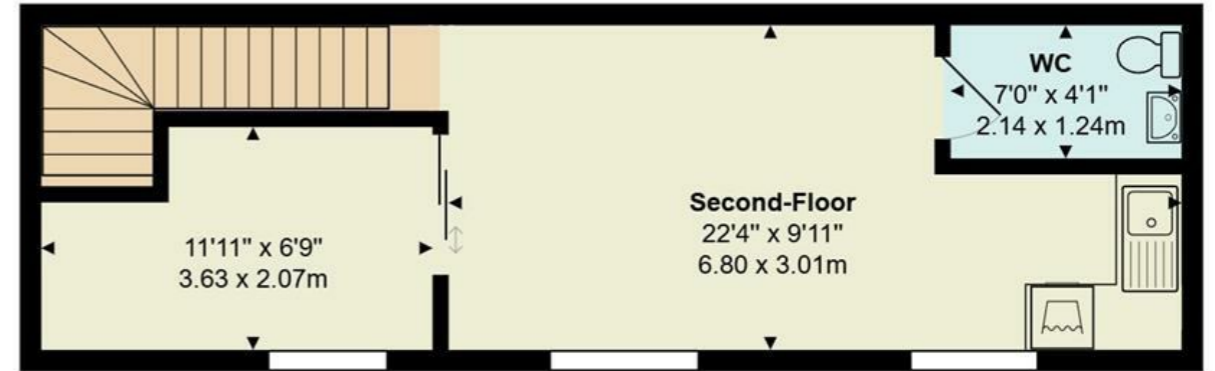
Property Specialist

Jon Hooper-Nash

Director

jon@jeffreycross.co.uk

Lower Cathedral Road, Riverside



Total Area: 563 ft² ... 52.3 m²

All measurements are approximate and for display purposes only

Superb opportunity to acquire a two storey unit within walking distance of the City Centre

Comments by the Homeowner



Lower Cathedral

, Cardiff, CF11 6LU

PCM

£600 PCM



0 Bedroom(s)



1 Bathroom(s)



sq ft



Contact our
Pontcanna Branch

02920 499680

Superb opportunity to acquire a spacious, multi-use unit within walking distance of the City Centre. The property is very neatly presented with separate kitchen, WC and second-floor level. Currently a hairdresser the property could be used for multi-purpose.

For more information, please call Jon in the Pontcanna office!





CARDIFF

VALE

CAERPHILLY

BRISTOL

www.jeffreygross.co.uk



Energy Efficiency Rating

	Current	Potential
Very energy efficient - lower running costs		
(92 plus) A		
(81-91) B		
(69-80) C		
(55-68) D		
(39-54) E		
(21-38) F		
(1-20) G		
Not energy efficient - higher running costs		

England & Wales

EU Directive
2002/91/EC

