



[www.jeffreygross.co.uk](http://www.jeffreygross.co.uk)

CARDIFF

VALE

CAERPHELLY

BRISTOL

*Greyfriars Road*

CARDIFF CITY CENTRE



*Luxury city centre living in Cardiff offering a premium, modern lifestyle that blends vibrant urban convenience with high-end, contemporary comforts. Residents can enjoy spacious, open-plan layouts, and private terraces with sweeping views of the capital.*

Comments by Mr Luke Trezise

**Property Specialist**

**Mr Luke Trezise**

Senior valuer

luke@jeffreycross.co.uk

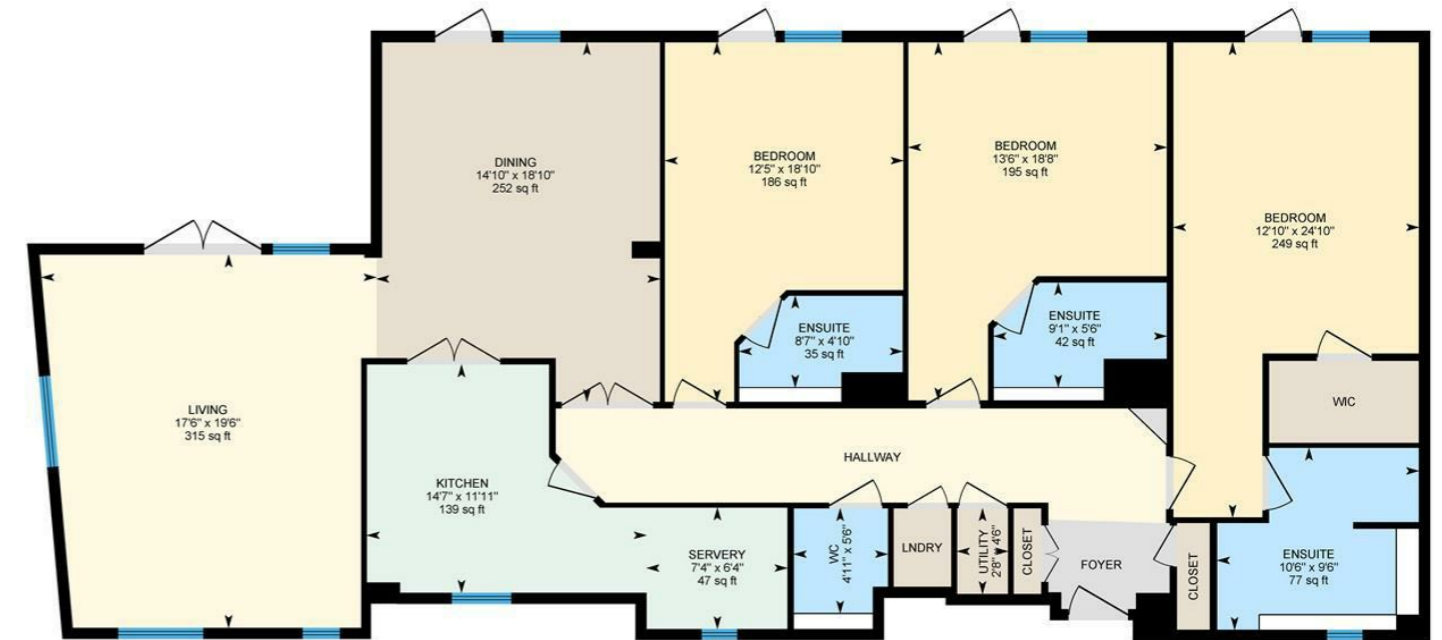


*A beautifully presented sixth floor luxury air conditioned apartment in Cardiff City Centre and located above the Park Plaza Hotel and benefitting from basement parking. Comprising of an entrance hallway with utility, laundry rooms and two built in storage closets, a good size high specification kitchen, 19' living room, 18' dining room and three excellent size bedrooms, each with their own en-suite's with the master bedroom benefitting from a walk in wardrobe. Access to the sixth floor is via an elevator and the building has concierge.*

Comments by the Homeowner

**Park View, City Centre, CRF**

6th Floor Interior Area 1911.84 sq ft



White regions are excluded from total floor area in iGUIDE floor plans. All room dimensions and floor areas must be considered approximate and are subject to independent verification.



# Greyfriars Road

Cardiff City Centre, Cardiff, CF10 3AL

Asking Price

£550,000



3 Bedroom(s)



2 Bathroom(s)



1912.00 sq ft



Contact our  
**Pontcanna Branch**

02920 499680

An exceptional sixth floor high specification apartment located right in the heart of Cardiff City Centre above the Park Plaza Hotel. Completed with concierge and offering elevator access to an atrium to the apartments entrance. Encompassing some 1912 SqFt of luxury living space and boasting a sizeable external south facing balcony area wrapping around the whole of the rear elevation. Internally comprising of an entrance hallway with utility, laundry rooms and two built in storage closets, a good size high specification kitchen, 19' living room, 18' dining room and three excellent size bedrooms, each with their own en-suite's with the master bedroom benefitting from a walk in wardrobe. All of the bedrooms and reception rooms have direct access to the south facing balcony area allowing stunning views overlooking Cardiff City's historic landmarks. The property comes with secure basement parking which for the City Centre is excellent.



CARDIFF

VALE

CAERPHILLY

BRISTOL

[www.jeffreygross.co.uk](http://www.jeffreygross.co.uk)



#### Entrance Foyer

#### Hallway

Access to all internal living spaces including a laundry & utility areas as well as a cloakroom and two built in storage closets.

W/C 5'6" x 4'11" (1.68m x 1.50m)

Kitchen 14'7" x 11'11" (4.45m x 3.63m)

Kitchen Servery 7'4" x 6'4" (2.24m x 1.93m)

Living Room 17'6" max x 19'6" max (5.33m max x 5.94m max)

Dining Room 18'10" x 14'10" (5.74m x 4.52m)

Master Bedroom 24'10" max x 12'10" max (7.57m max x 3.91m max)

Walk In Wardrobe

En-Suite 10'6" max x 9'6" max (3.20m max x 2.90m max)

Bedroom 18'8" max x 13'6" max (5.69m max x 4.11m max)

En-Suite 9'1" x 5'6" (2.77m x 1.68m)

Bedroom 18'10" max x 12'5" (5.74m max x 3.78m)

En-Suite 8'7" x 4'10" (2.62m x 1.47m)

#### Tenure

We have been advised by our seller client that the property is leasehold, you legal representative will confirm this.

#### EPC

Rated C

#### Council Tax

Band H

#### Parking

The property comes with secure basement allocated parking.

CARDIFF

VALE

CAERPHILLY

BRISTOL

[www.jeffreygross.co.uk](http://www.jeffreygross.co.uk)

