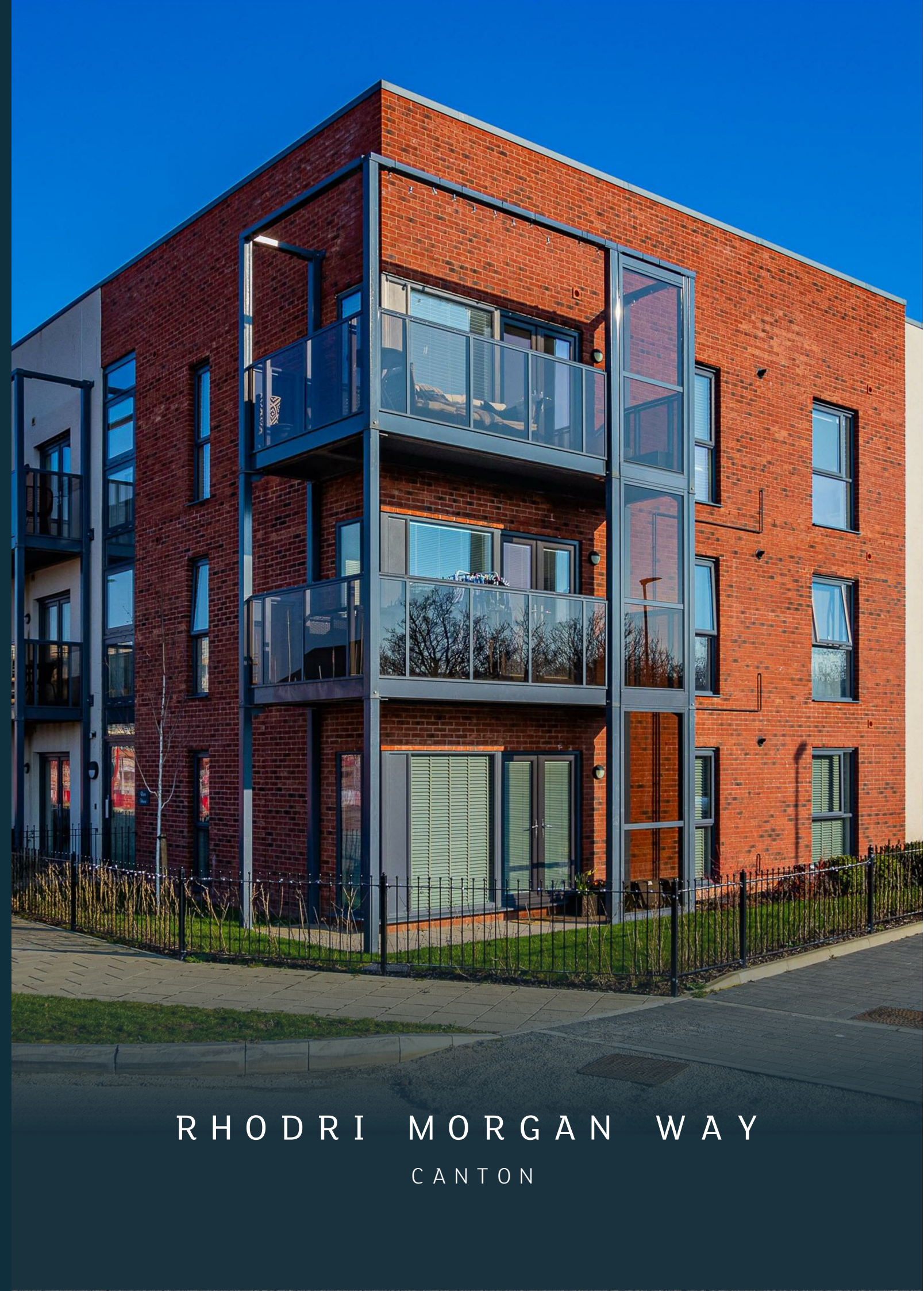


CARDIFF'S HOME FOR
STYLISH SALES
& LETTINGS

JeffreyRoss



RHODRI MORGAN WAY
CANTON



Energy Efficiency Rating		
	Current	Potential
Very energy efficient - lower running costs		
(92 plus) A		
(81-91) B	83	83
(69-80) C		
(55-68) D		
(39-54) E		
(21-38) F		
(1-20) G		
Not energy efficient - higher running costs		
England & Wales	EU Directive 2002/91/EC	

"

A well presented apartment in the very popular Mill, with an allocated parking space and a spacious balcony which overlooks a green peaceful space.




"

Comments by - Mrs Ruby Ledley



RHODRI MORGAN WAY

CANTON, CF11 8GB - £190,000

 1 bedrooms  1 bathroom(s)  462.00 sq ft

This delightful one bedroom apartment on Rhodri Morgan Way offers a perfect blend of modern living and serene surroundings. Spanning 462 square feet, this property features one well-appointed bedroom, making it an ideal choice for singles or couples seeking a cosy yet stylish home.

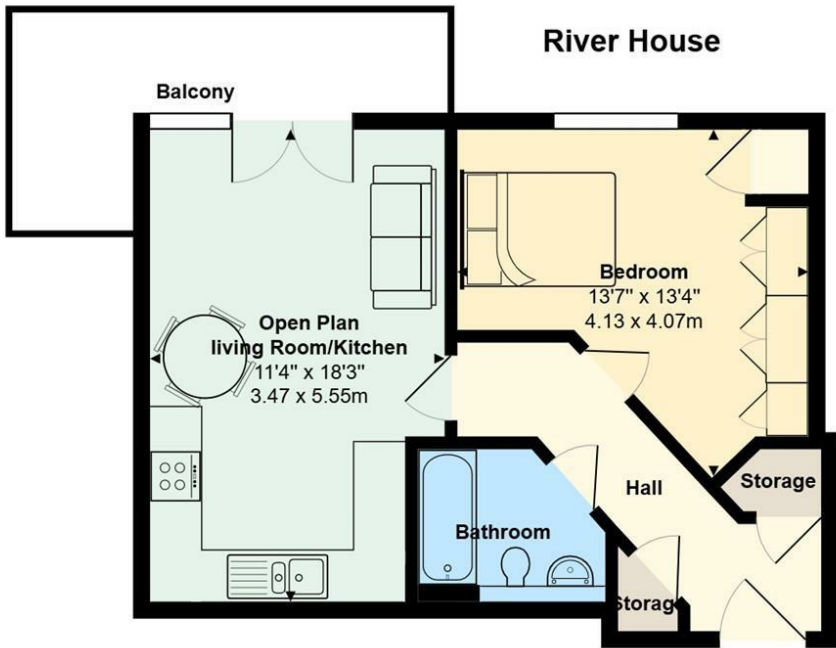
You will be greeted by a bright and inviting reception room and kitchen that exudes warmth and comfort. The modern design throughout the apartment ensures a contemporary feel, with tasteful finishes that cater to today's lifestyle.

One of the standout features of this apartment is the spacious balcony, with an outlook onto lush landscapes enhances the sense of peace and privacy, making it a perfect escape from the hustle and bustle of city life.

Additionally, the property comes with a designated parking space, a valuable asset in this vibrant area. With its convenient location, you will find yourself just a short distance from local amenities, parks, and excellent transport links, ensuring that everything you need is within easy reach.

PROPERTY SPECIALIST

Mrs Ruby Ledley
ruby@jeffreygross.co.uk
02920499680
Valuer



Total Area: 446 ft² ... 41.5 m² (excluding storage, balcony)

All measurements are approximate and for display purposes only

