



www.jeffreygross.co.uk

CARDIFF

VALE

CAERPHILLY

BRISTOL

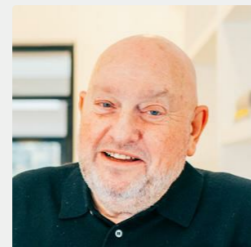
Porlock Drive

SULLY



A well presented two bedroom bungalow located in a quiet road in this popular coastal village.

Comments by Mr Jeff Hopkins



Property Specialist
Mr Jeff Hopkins
Valuer

jeff@jeffreycross.co.uk



Comments by the Homeowner





Porlock Drive

Sully, Penarth, CF64 5QA

£260,000



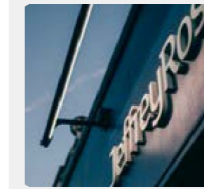
2 Bedroom(s)



1 Bathroom(s)



sq ft



Contact our
Penarth Branch

02920415161

Located in a quiet residential road in the popular coastal village of Sully. This well presented, two bedroom bungalow has a lounge, fitted kitchen, conservatory, two bedrooms and bathroom. Front garden, driveway, private south facing rear garden. Gas central heating, uPVC double glazing. There are local convenience stores within walking distance, a primary school and two lovely local pubs, bus stops with service to Barry and Penarth. To be sold with NO ONWARD CHAIN





Lounge 11'1" x 8'7" (3.38m x 2.62m)

Kitchen 11'1" x 8'7" (3.38m x 2.62m)

Bathroom

Bedroom 1 10'8" x 8'8" (3.25m x 2.64m)

Bedroom 2 8'8" x 7'6" (2.64m x 2.29m)

Conservatory 8'0" x 13'6" (2.44m x 4.11m)

Outside

Sloping pathway to driveway, raised beds.

Rear Garden

South facing private rear garden with lawn and patio.

Tenure

We are informed by the seller that the property is Freehold

Council tax

Band D £2,202.11 (2026-2027)

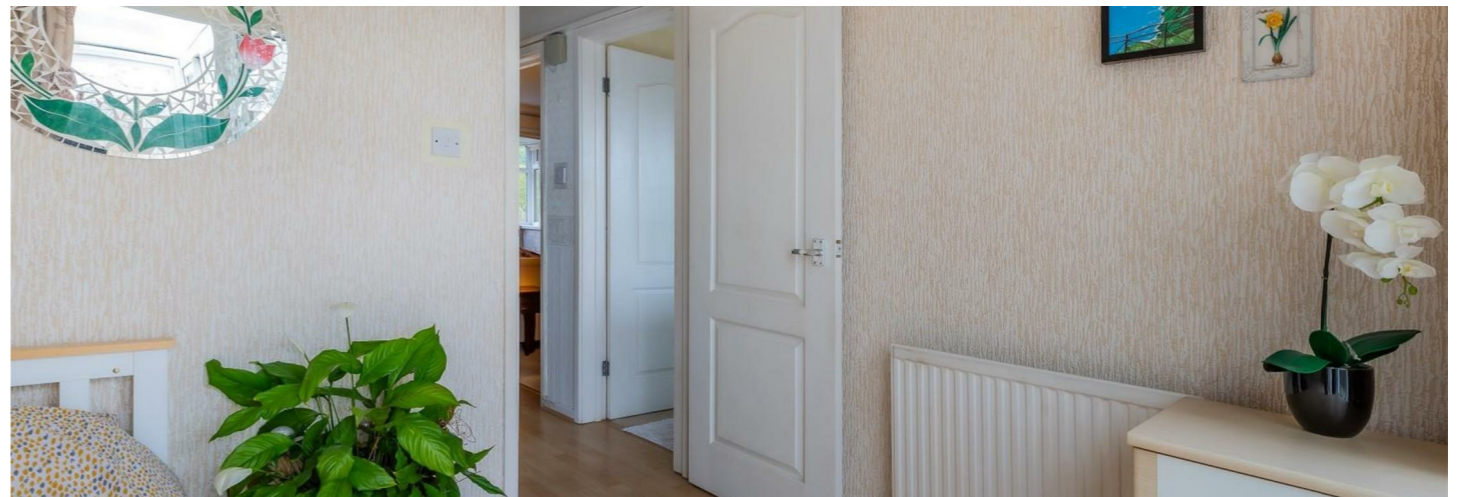
C A R D I F F

V A L E

C A E R P H I L L Y

B R I S T O L

www.jeffreygross.co.uk





Energy Efficiency Rating		Current	Potential
Very energy efficient - lower running costs			
(92 plus) A			86
(81-91) B			
(69-80) C			
(55-68) D		68	
(39-54) E			
(21-38) F			
(1-20) G			
Not energy efficient - higher running costs			
England & Wales			EU Directive 2002/91/EC 