

www.jeffreygross.co.uk

CARDIFF

VALE

CAERPHILLY

BRISTOL



Alexandra Court

THE ESPLANADE



Comments by Ms Cody Byrne

Property Specialist
Ms Cody Byrne
Administrator

cody@jeffreycross.co.uk



Comments by the Homeowner

Alexandra Court, Penarth



Total Area: 51.9 m² ... 559 ft²

All measurements are approximate and for display purposes only



Alexandra Court

The Esplanade, Penarth, CF64 3LA

£950



1 Bedroom(s)



1 Bathroom(s)



sq ft



Contact our
Penarth Branch

02920415161

Rare opportunity to rent this fourth floor one double bedroom apartment with fantastic sea views. Intercom entrance, gym and one designated parking space, lift and stairway access. Entrance hallway, light and airy lounge with panoramic views, double bedroom with double bed and wardrobes, fitted kitchen with appliances and bathroom with walk-in shower.

Council Tax Band D
EPC Rating B

A holding fee of one weeks' rent will be payable to secure the dwelling. This will be deducted from the final balance payable upon moving into the dwelling, subject to a successful application. Jeffrey Ross Limited reserves the right to retain this payment should the applicant have provided false or misleading information at the time of applying for the dwelling or failed to take reasonable steps to enter into the Standard Occupation Contract.



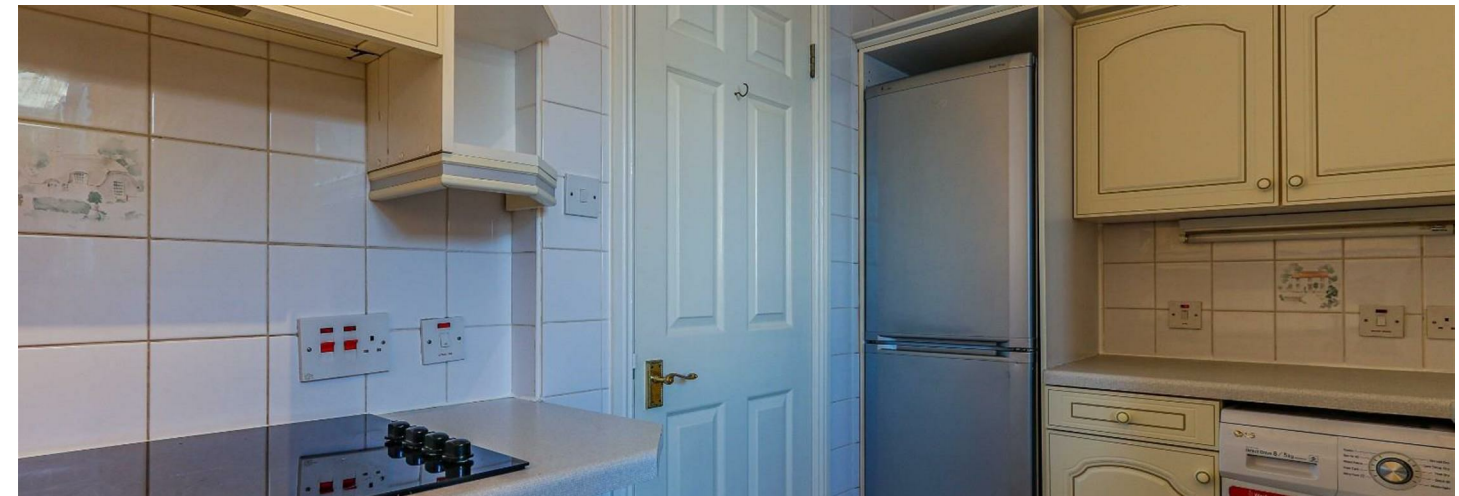
CARDIFF

VALE

CAERPHILLY

BRISTOL

www.jeffreygross.co.uk





| Energy Efficiency Rating | | |
|---|---------|--|
| | Current | Potential |
| Very energy efficient - lower running costs | | |
| (92 plus) A | | |
| (81-91) B | | |
| (69-80) C | | |
| (55-68) D | | |
| (39-54) E | | |
| (21-38) F | | |
| (1-20) G | | |
| Not energy efficient - higher running costs | | |
| England & Wales | | EU Directive 2002/91/EC  |

