



[www.jeffreygross.co.uk](http://www.jeffreygross.co.uk)

CARDIFF

VALE

CAERPHELLY

BRISTOL



*Pool Paddock*

CHARLTON HAYES



Comments by Ms Ashton Jones



**Property Specialist**

**Ms Ashton Jones**

Branch manager

a.jones@thepropertyoutlet.com

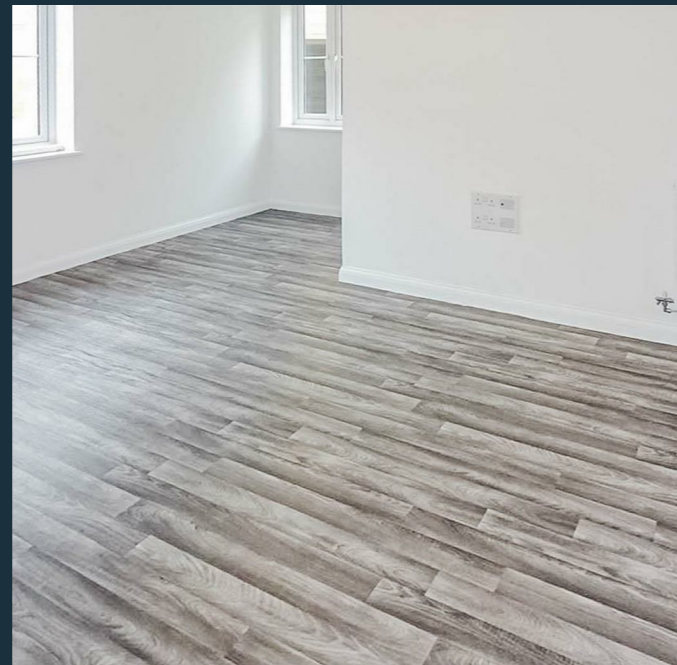
### Master Floorplan Image

[View in fullscreen](#)



Made with Netplan ©2021

Comments by the Homeowner





# Pool Paddock

*Charlton Hayes, Bristol, BS34 5NZ*

£1,400



2 Bedroom(s)



2 Bathroom(s)



667.37 sq ft



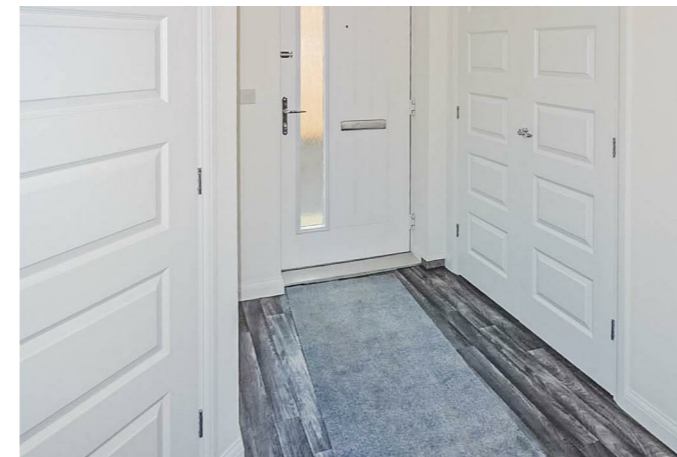
Contact our  
***Property Outlet Branch***

0117 935 4565

\* AVAILABLE 30.05.2026 \*

TWO BEDROOM GROUND FLOOR APARTMENT WITH PARKING! Jeffrey ross & The property outlet are delighted to offer this apartment in the Charlton Hayes development to the rental market. The accommodation comprises entrance hall, large open plan kitchen & living room. Two double bedrooms, one with ensuite shower room & w.c. Offered unfurnished but with white goods that include an integrated fridge freezer. Washing machine, gas hob with electric oven & dishwasher. The property has gas central heating and double glazing throughout. Outside there is an allocated parking space. The property is close to local amenities and motorway networks.

Holding Deposit £323.07





CARDIFF

VALE

CAERPHILLY

BRISTOL

[www.jeffreygross.co.uk](http://www.jeffreygross.co.uk)



Energy Efficiency Rating

	Current	Potential
Very energy efficient - lower running costs		
(92 plus) A		
(81-91) B	83	83
(69-80) C		
(55-68) D		
(39-54) E		
(21-38) F		
(1-20) G		
Not energy efficient - higher running costs		

England & Wales

EU Directive 2002/91/EC

