

[www.jeffreygross.co.uk](http://www.jeffreygross.co.uk)

CARDIFF

VALE

CAERPHILLY

BRISTOL



*Inkerman Close*

HORFIELD



Comments by Mr Carl Mortimore

**Property Specialist**  
**Mr Carl Mortimore**  
 Branch manager

c.mortimore@thepropertyoutlet.com



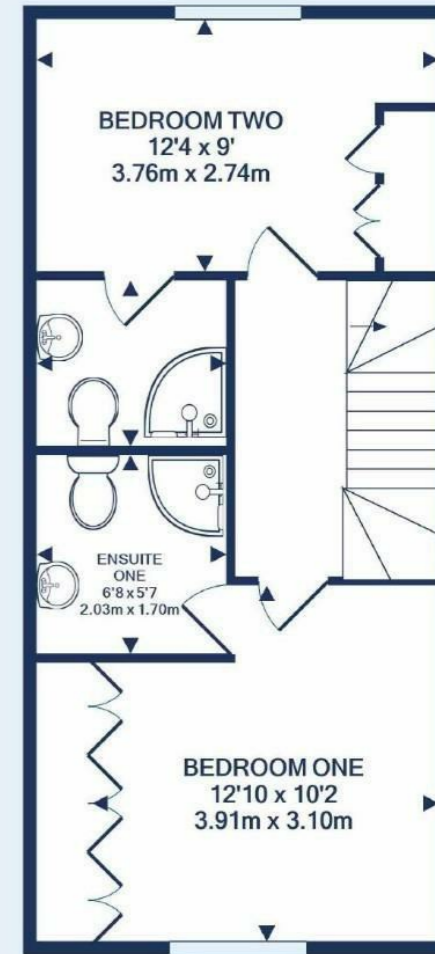
Comments by the Homeowner



GROUND FLOOR  
 APPROX. FLOOR  
 AREA 497 SQ.FT.  
 (46.2 SQ.M.)



1ST FLOOR  
 APPROX. FLOOR  
 AREA 497 SQ.FT.  
 (46.2 SQ.M.)



2ND FLOOR  
 APPROX. FLOOR  
 AREA 497 SQ.FT.  
 (46.2 SQ.M.)

TOTAL APPROX. FLOOR AREA 1491 SQ.FT. (138.5 SQ.M.)

Made with Metropix ©2022



# Inkerman Close

Horfield, Bristol, BS7 0XU

PCM

£2,500 PCM



4 Bedroom(s)



3 Bathroom(s)



1184.00 sq ft



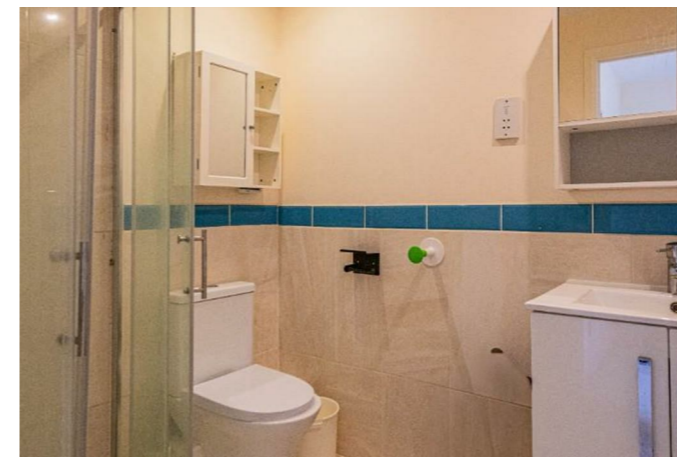
Contact our  
**Property Outlet Branch**

0117 935 4565

\* AVAILABLE 07.09.2026 \*

FOUR DOUBLE BEDROOM FURNISHED HOME! The Property Outlet & Jeffrey Ross are delighted to offer to the rental market this well presented TOWN HOUSE situated close to Southmead Hospital & local public transport routes. The accommodation comprises ENTRANCE HALL, CLOAKROOM/WC, KITCHEN/DINING ROOM. To the first floor there are TWO DOUBLE BEDROOMS & a BATH/SHOWER ROOM/WC. To the second floor there is a MASTER BEDROOM with EN/SUITE SHOWER ROOM & WC & a further DOUBLE BEDROOM with an EN/SUITE SHOWER ROOM/WC. Offered FURNISHED with WHITE GOODS that include - WASHING MACHINE, INTEGRATED FRIDGE/FREEZER, GAS HOB, DOUBLE ELECTRIC OVEN & DISHWASHER. Benefits include GAS CENTRAL HEATING, DOUBLE GLAZING, REAR GARDEN, GARAGE & OFF ROAD PARKING. The Property Outlet feel this home would ideally suit a group of professional sharers or students. The property is situated close to Horfield Common, Horfield Sports Centre & local shops.

Holding Deposit £576.92





CARDIFF

VALE

CAERPHILLY

BRISTOL

[www.jeffreygross.co.uk](http://www.jeffreygross.co.uk)





Energy Efficiency Rating		Current	Potential
Very energy efficient - lower running costs			
(92 plus) A			90
(81-91) B		80	
(69-80) C			
(55-68) D			
(39-54) E			
(21-38) F			
(1-20) G			
Not energy efficient - higher running costs			
<b>England &amp; Wales</b>		EU Directive 2002/91/EC 